

General Information

Federally Recognized Tribal Statistical Areas

Hopi Reservation and Off-Reservation Trust Land, AZ; Navajo Nation Reservation and Off-Reservation Trust Land, AZ--NM--UT

Service Consumption

565 Annual Unlinked Trips (UPT)

Service Supplied

18,760 Annual Vehicle Revenue Miles (VRM)

507 Annual Vehicle Revenue Hours (VRH)

Financial Information

Sources of Operating Funds Expended

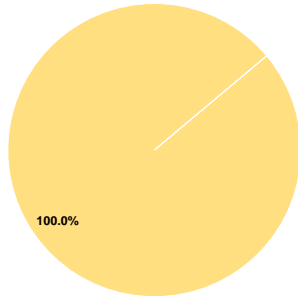
Fare Revenues	\$0	0.0%
Local Funds	\$0	0.0%
State Funds	\$0	0.0%
Federal Assistance	\$396,616	100.0%
Other Funds	\$0	0.0%
Total Operating Funds Expended	\$396,616	100.0%

Sources of Capital Funds Expended

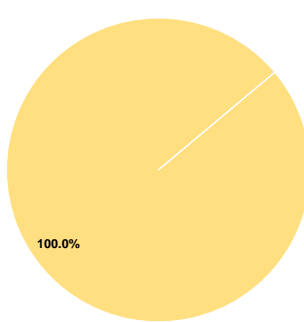
Fare Revenues	\$0	0.0%
Local Funds	\$0	0.0%
State Funds	\$0	0.0%
Federal Assistance	\$70,168	100.0%
Other Funds	\$0	0.0%
Total Capital Funds Expended	\$70,168	100.0%

Assets	
Revenue Vehicles	9
Service Vehicles	3
Facilities	0

Operating Funding Sources



Capital Funding Sources



Performance Measure Targets - 2022

Performance Measure - Asset Type - Target % not in State of Good Repair  
Equipment - Automobiles - 50%  
Equipment - Trucks and other Rubber Tire Vehicles - 50%  
Facility - Administrative / Maintenance Facilities - 20%  
Rolling Stock - CU - Cutaway - 26%  
Rolling Stock - MV - Minivan - 26%  
Rolling Stock - VN - Van - 26%

Database Information

NTDID: 99382  
Reporter Type: Tribal Reporter

Asset Type: Tier II  
Sponsor NTDID: 9R01

Modal Characteristics

Operation Characteristics

Vehicles Operated at Maximum Service

Mode	Directly Operated	Purchased Transportation	Operating Expenses	Fare Revenues	Uses of Capital Funds	Annual Unlinked Trips	Annual Vehicle Revenue Miles	Annual Vehicle Revenue Hours	Average Fleet Age in Years <sup>a</sup>
Bus	5	-	\$396,616	\$0	\$70,168	565	18,760	507	3.0
Total	5	-	\$396,616	\$0	\$70,168	565	18,760	507	

Performance Measures

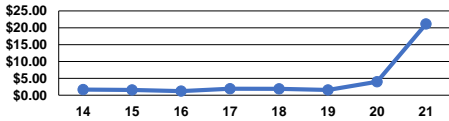
Service Efficiency

Mode	Operating Expenses per Vehicle Revenue Mile	Operating Expenses per Vehicle Revenue Hour
Bus	\$21.14	\$782.28
Total	\$21.14	\$782.28

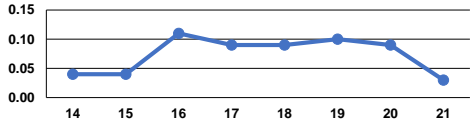
Service Effectiveness

Mode	Operating Expenses per Unlinked Passenger Trip	Unlinked Trips per Vehicle Revenue Mile	Unlinked Trips per Vehicle Revenue Hour
Bus	\$701.98	0.0	1.1
Total	\$701.98	0.0	1.1

Operating Expense per Vehicle Revenue Mile: Agency Total



Unlinked Passenger Trips per Vehicle Revenue Mile: Agency Total



Notes:

<sup>a</sup>Demand Response - Taxi (DR/TX) and non-dedicated fleets do not report fleet age data.