

General Information

Federally Recognized Tribal Statistical Areas

Crow Reservation and Off-Reservation Trust Land, MT

Service Consumption

4,656 Annual Unlinked Trips (UPT)

Service Supplied

154,146 Annual Vehicle Revenue Miles (VRM)

4,195 Annual Vehicle Revenue Hours (VRH)

Financial Information

Sources of Operating Funds Expended

Fare Revenues	\$1,084	0.2%
Local Funds	\$0	0.0%
State Funds	\$0	0.0%
Federal Assistance	\$644,122	99.8%
Other Funds	\$0	0.0%

Total Operating Funds Expended \$645,206 100.0%

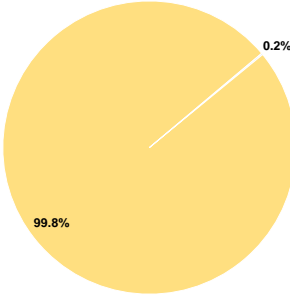
Sources of Capital Funds Expended

Fare Revenues	\$0	0.0%
Local Funds	\$0	0.0%
State Funds	\$0	0.0%
Federal Assistance	\$256,400	100.0%
Other Funds	\$0	0.0%

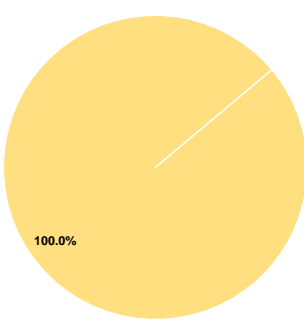
Total Capital Funds Expended \$256,400 100.0%

Assets	
Revenue Vehicles	7
Service Vehicles	1
Facilities	0

Operating Funding Sources



Capital Funding Sources



Performance Measure Targets - 2022

Performance Measure - Asset Type - Target % not in State of Good Repair
Facility - Administrative / Maintenance Facilities - 0%
Facility - Passenger / Parking Facilities - 0%
Rolling Stock - AO - Automobile - 100%
Rolling Stock - BU - Bus - 2%
Rolling Stock - CU - Cutaway - 36%
Rolling Stock - MV - Minivan - 15%
Rolling Stock - SB - School Bus - 100%
Rolling Stock - SV - Sports Utility Vehicle - 0%
Rolling Stock - VN - Van - 40%

Database Information

NTDID: 88188

Reporter Type: Tribal Reporter

Asset Type: Tier II

Sponsor NTDID: 8R02

Modal Characteristics

Operation Characteristics

Vehicles Operated at Maximum Service

Mode	Directly Operated	Purchased Transportation	Operating Expenses	Fare Revenues	Uses of Capital Funds	Annual Unlinked Trips	Annual Vehicle Revenue Miles	Annual Vehicle Revenue Hours	Average Fleet Age in Years ^a
Demand Response	-	-	\$0	\$0	\$0	0	0	0	9.5
Bus	4	-	\$645,206	\$1,084	\$256,400	4,656	154,146	4,195	4.7
Total	4	-	\$645,206	\$1,084	\$256,400	4,656	154,146	4,195	

Performance Measures

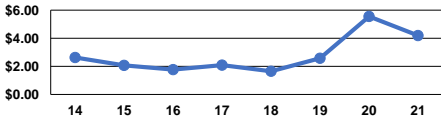
Service Efficiency

Mode	Operating Expenses per Vehicle Revenue Mile	Operating Expenses per Vehicle Revenue Hour
Demand Response	\$0.00	\$0.00
Bus	\$4.19	\$153.80
Total	\$4.19	\$153.80

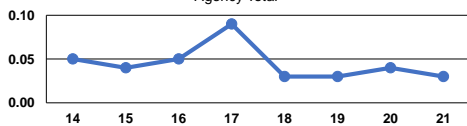
Service Effectiveness

Mode	Operating Expenses per Unlinked Passenger Trip	Unlinked Trips per Vehicle Revenue Mile	Unlinked Trips per Vehicle Revenue Hour
Demand Response	\$0.00	0.0	0.0
Bus	\$138.58	0.0	1.1
Total	\$138.58	0.0	1.1

Operating Expense per Vehicle Revenue Mile: Agency Total



Unlinked Passenger Trips per Vehicle Revenue Mile: Agency Total



Notes:

^aDemand Response - Taxi (DR/TX) and non-dedicated fleets do not report fleet age data.