

General Information

Federally Recognized Tribal Statistical Areas

Pine Ridge Reservation, SD--NE

Service Consumption

4,049 Annual Unlinked Trips (UPT)

Service Supplied

229,627 Annual Vehicle Revenue Miles (VRM)

6,642 Annual Vehicle Revenue Hours (VRH)

Financial Information

Sources of Operating Funds Expended

Fare Revenues	\$9,461	1.0%
Local Funds	\$0	0.0%
State Funds	\$0	0.0%
Federal Assistance	\$980,101	98.6%
Other Funds	\$4,318	0.4%
Total Operating Funds Expended	\$993,880	100.0%

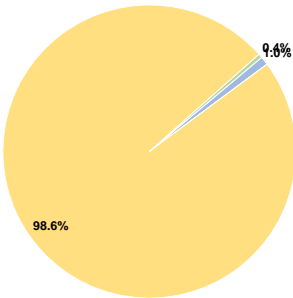
Sources of Capital Funds Expended

Fare Revenues	\$0	0.0%
Local Funds	\$0	0.0%
State Funds	\$0	0.0%
Federal Assistance	\$177,916	100.0%
Other Funds	\$0	0.0%
Total Capital Funds Expended	\$177,916	100.0%

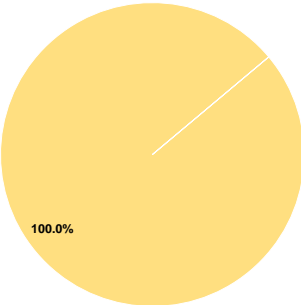
Assets

Revenue Vehicles	8
Service Vehicles	2
Facilities	1

Operating Funding Sources



Capital Funding Sources



Performance Measure Targets - 2022

Performance Measure - Asset Type - Target % not in State of Good Repair
Equipment - Trucks and other Rubber Tire Vehicles - 0%
Facility - Administrative / Maintenance Facilities - 0%
Rolling Stock - CU - Cutaway - 0%
Rolling Stock - MV - Minivan - 100%
Rolling Stock - SV - Sports Utility Vehicle - 0%

Database Information

NTDID: 88122

Reporter Type: Tribal Reporter

Asset Type: Tier II

Sponsor NTDID:

Modal Characteristics

Operation Characteristics

Vehicles Operated at Maximum Service

Mode	Directly Operated	Purchased Transportation	Operating Expenses	Fare Revenues	Uses of Capital Funds	Annual Unlinked Trips	Annual Vehicle Revenue Miles	Annual Vehicle Revenue Hours	Average Fleet Age in Years ^a
Bus	8	-	\$993,880	\$9,461	\$177,916	4,049	229,627	6,642	7.6
Total	8	-	\$993,880	\$9,461	\$177,916	4,049	229,627	6,642	

Performance Measures

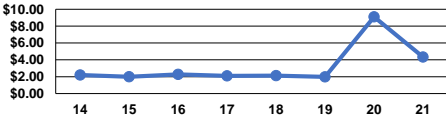
Service Efficiency

Mode	Operating Expenses per Vehicle Revenue Mile	Operating Expenses per Vehicle Revenue Hour
Bus	\$4.33	\$149.64
Total	\$4.33	\$149.64

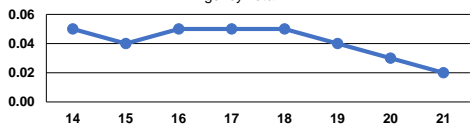
Service Effectiveness

Mode	Operating Expenses per Unlinked Passenger Trip	Unlinked Trips per Vehicle Revenue Mile	Unlinked Trips per Vehicle Revenue Hour
Bus	\$245.46	0.0	0.6
Total	\$245.46	0.0	0.6

Operating Expense per Vehicle Revenue Mile: Agency Total



Unlinked Passenger Trips per Vehicle Revenue Mile: Agency Total



Notes:

^aDemand Response - Taxi (DR/TX) and non-dedicated fleets do not report fleet age data.