

General Information

Federally Recognized Tribal Statistical Areas

Poarch Creek Reservation and Off-Reservation Trust Land, AL--FL

Service Consumption

240 Annual Unlinked Trips (UPT)

Service Supplied

6,901 Annual Vehicle Revenue Miles (VRM)

154 Annual Vehicle Revenue Hours (VRH)

Financial Information

Sources of Operating Funds Expended

Fare Revenues	\$0	0.0%
Local Funds	\$42,160	100.0%
State Funds	\$0	0.0%
Federal Assistance	\$0	0.0%
Other Funds	\$0	0.0%
Total Operating Funds Expended	\$42,160	100.0%

Sources of Capital Funds Expended

Fare Revenues	\$0
Local Funds	\$0
State Funds	\$0
Federal Assistance	\$0
Other Funds	\$0
Total Capital Funds Expended	\$0

Assets	
Revenue Vehicles	4
Service Vehicles	0
Facilities	0

Database Information

NTDID: 44919

Asset Type: Tier II

Reporter Type: Tribal Reporter

Sponsor NTDID:

Modal Characteristics

Operation Characteristics

Vehicles Operated at Maximum Service

Mode	Directly Operated	Purchased Transportation	Operating Expenses	Fare Revenues	Uses of Capital Funds	Annual Unlinked Trips	Annual Vehicle Revenue Miles	Annual Vehicle Revenue Hours	Average Fleet Age in Years ^a
Demand Response	2	-	\$42,160	\$0	\$0	240	6,901	154	7.8
Total	2	-	\$42,160	\$0	\$0	240	6,901	154	

Performance Measures

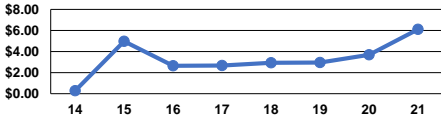
Service Efficiency

Mode	Operating Expenses per Vehicle Revenue Mile	Operating Expenses per Vehicle Revenue Hour
Demand Response	\$6.11	\$273.77
Total	\$6.11	\$273.77

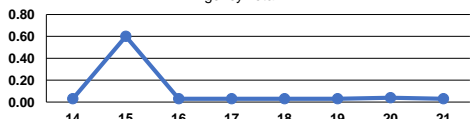
Service Effectiveness

Mode	Operating Expenses per Unlinked Passenger Trip	Unlinked Trips per Vehicle Revenue Mile	Unlinked Trips per Vehicle Revenue Hour
Demand Response	\$175.67	0.0	1.6
Total	\$175.67	0.0	1.6

Operating Expense per Vehicle Revenue Mile: Agency Total



Unlinked Passenger Trips per Vehicle Revenue Mile: Agency Total



Notes:

^aDemand Response - Taxi (DR/TX) and non-dedicated fleets do not report fleet age data.

Performance Measure Targets - 2022

Performance Measure - Asset Type - Target % not in State of Good Repair
Rolling Stock - BU - Bus - 50%
Rolling Stock - CU - Cutaway - 100%
Rolling Stock - MV - Minivan - 25%