

General Information

Federally Recognized Tribal Statistical Areas

Houlton Maliseet Reservation and Off-Reservation Trust Land, ME

Service Consumption

216 Annual Unlinked Trips (UPT)

Service Supplied

29,255 Annual Vehicle Revenue Miles (VRM)

8,426 Annual Vehicle Revenue Hours (VRH)

Financial Information

Sources of Operating Funds Expended

Fare Revenues	\$0	0.0%
Local Funds	\$0	0.0%
State Funds	\$0	0.0%
Federal Assistance	\$174,254	100.0%
Other Funds	\$0	0.0%

Total Operating Funds Expended \$174,254 100.0%

Sources of Capital Funds Expended

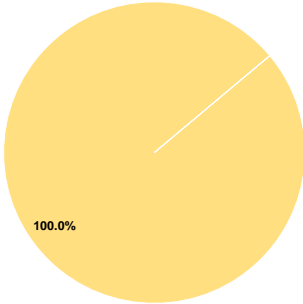
Fare Revenues	\$0
Local Funds	\$0
State Funds	\$0
Federal Assistance	\$0
Other Funds	\$0

Total Capital Funds Expended \$0

Assets

Revenue Vehicles	8
Service Vehicles	2
Facilities	1

Operating Funding Sources



Performance Measure Targets - 2022

Performance Measure - Asset Type - Target % not in State of Good Repair
Equipment - Trucks and other Rubber Tire Vehicles - 0%
Facility - Administrative / Maintenance Facilities - 0%
Rolling Stock - AO - Automobile - 50%
Rolling Stock - MV - Minivan - 33%
Rolling Stock - SV - Sports Utility Vehicle - 0%
Rolling Stock - VN - Van - 0%

Database Information

NTDID: 11140

Reporter Type: Tribal Reporter

Asset Type: Tier II

Sponsor NTDID:

Modal Characteristics

Operation Characteristics

Vehicles Operated at Maximum Service

Mode	Directly Operated	Purchased Transportation	Operating Expenses	Fare Revenues	Uses of Capital Funds	Annual Unlinked Trips	Annual Vehicle Revenue Miles	Annual Vehicle Revenue Hours	Average Fleet Age in Years ^a
Demand Response	4	-	\$174,254	\$0	\$0	216	29,255	8,426	4.8
Total	4	-	\$174,254	\$0	\$0	216	29,255	8,426	

Performance Measures

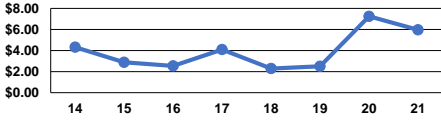
Service Efficiency

Mode	Operating Expenses per Vehicle Revenue Mile	Operating Expenses per Vehicle Revenue Hour
Demand Response	\$5.96	\$20.68
Total	\$5.96	\$20.68

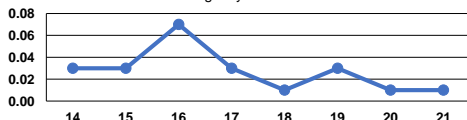
Service Effectiveness

Mode	Operating Expenses per Unlinked Passenger Trip	Unlinked Trips per Vehicle Revenue Mile	Unlinked Trips per Vehicle Revenue Hour
Demand Response	\$806.73	0.0	0.0
Total	\$806.73	0.0	0.0

Operating Expense per Vehicle Revenue Mile: Agency Total



Unlinked Passenger Trips per Vehicle Revenue Mile: Agency Total



Notes:

^aDemand Response - Taxi (DR/TX) and non-dedicated fleets do not report fleet age data.