

General Information

Federally Recognized Tribal Statistical Areas

Gakona ANVSA, AK; Gulkana ANVSA, AK; Copper Center ANVSA, AK; Chitina ANVSA, AK;
Tazlina ANVSA, AK; Chistochina ANVSA, AK

Service Consumption

1,393 Annual Unlinked Trips (UPT)

Service Supplied

61,751 Annual Vehicle Revenue Miles (VRM)
1,602 Annual Vehicle Revenue Hours (VRH)

Database Information

NTDID: 00085
Reporter Type: Tribal Reporter

Asset Type: Tier II
Sponsor NTDID: OR04

Financial Information

Sources of Operating Funds Expended

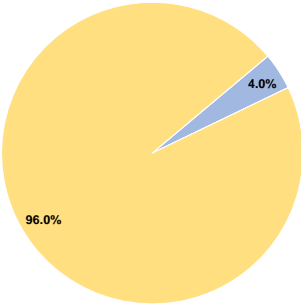
Fare Revenues	\$11,244	4.0%
Local Funds	\$0	0.0%
State Funds	\$0	0.0%
Federal Assistance	\$272,328	96.0%
Other Funds	\$0	0.0%
Total Operating Funds Expended	\$283,572	100.0%

Sources of Capital Funds Expended

Fare Revenues	\$0
Local Funds	\$0
State Funds	\$0
Federal Assistance	\$0
Other Funds	\$0
Total Capital Funds Expended	\$0

Assets	
Revenue Vehicles	6
Service Vehicles	0
Facilities	0

Operating Funding Sources



Performance Measure Targets - 2022

Performance Measure - Asset Type - Target % not in State of Good Repair
Equipment - Automobiles - 10%
Equipment - Trucks and other Rubber Tire Vehicles - 20%
Facility - Administrative / Maintenance Facilities - 0%
Facility - Passenger / Parking Facilities - 0%
Rolling Stock - AO - Automobile - 30%
Rolling Stock - BU - Bus - 30%
Rolling Stock - CU - Cutaway - 40%
Rolling Stock - FB - Ferryboat - 18%
Rolling Stock - MV - Minivan - 40%
Rolling Stock - SV - Sports Utility Vehicle - 100%
Rolling Stock - VN - Van - 25%

Modal Characteristics

Operation Characteristics

Vehicles Operated at Maximum Service

Mode	Directly Operated	Purchased Transportation	Operating Expenses	Fare Revenues	Uses of Capital Funds	Annual Unlinked Trips	Annual Vehicle Revenue Miles	Annual Vehicle Revenue Hours	Average Fleet Age in Years ^a
Demand Response	1	-	\$890	\$190	\$0	12	414	10	6.0
Bus	2	-	\$282,682	\$11,054	\$0	1,381	61,337	1,592	6.0
Total	3	-	\$283,572	\$11,244	\$0	1,393	61,751	1,602	

Performance Measures

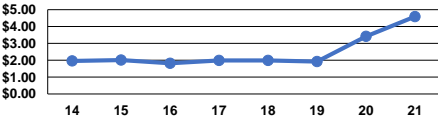
Service Efficiency

Mode	Operating Expenses per Vehicle Revenue Mile	Operating Expenses per Vehicle Revenue Hour
Demand Response	\$2.15	\$89.00
Bus	\$4.61	\$177.56
Total	\$4.59	\$177.01

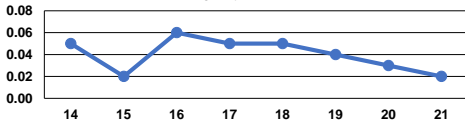
Service Effectiveness

Mode	Operating Expenses per Unlinked Passenger Trip	Unlinked Trips per Vehicle Revenue Mile	Unlinked Trips per Vehicle Revenue Hour
Demand Response	\$74.17	0.0	1.2
Bus	\$204.69	0.0	0.9
Total	\$203.57	0.0	0.9

Operating Expense per Vehicle Revenue Mile: Agency Total



Unlinked Passenger Trips per Vehicle Revenue Mile: Agency Total



Notes:

^aDemand Response - Taxi (DR/TX) and non-dedicated fleets do not report fleet age data.

