

General Information

Federally Recognized Tribal Statistical Areas

Yankton Reservation, SD

Service Consumption

8,762 Annual Unlinked Trips (UPT)

Service Supplied

66,646 Annual Vehicle Revenue Miles (VRM)
2,618 Annual Vehicle Revenue Hours (VRH)

Database Information

NTDID: 88194
Reporter Type: Tribal Reporter

Asset Type: Tier II
Sponsor NTDID:

Financial Information

Sources of Operating Funds Expended

Fare Revenues	\$2,035	0.9%
Local Funds	\$0	0.0%
State Funds	\$0	0.0%
Federal Assistance	\$226,400	99.1%
Other Funds	\$0	0.0%
Total Operating Funds Expended	\$228,435	100.0%

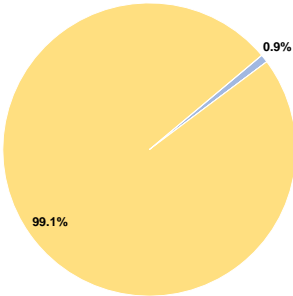
Sources of Capital Funds Expended

Fare Revenues	\$0	0.0%
Local Funds	\$48,375	20.0%
State Funds	\$0	0.0%
Federal Assistance	\$193,500	80.0%
Other Funds	\$0	0.0%
Total Capital Funds Expended	\$241,875	100.0%

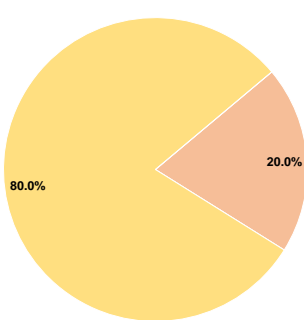
Assets

Revenue Vehicles	10
Service Vehicles	0
Facilities	1

Operating Funding Sources



Capital Funding Sources



Performance Measure Targets - 2021

Performance Measure - Asset Type - Target % not in State of Good Repair
Facility - Administrative / Maintenance Facilities - 0%
Rolling Stock - BU - Bus - 0%
Rolling Stock - CU - Cutaway - 0%
Rolling Stock - MV - Minivan - 0%
Rolling Stock - VN - Van - 100%

Modal Characteristics

Operation Characteristics

Vehicles Operated at Maximum Service

Mode	Directly Operated	Purchased Transportation	Operating Expenses	Fare Revenues	Uses of Capital Funds	Annual Unlinked Trips	Annual Vehicle Revenue Miles	Annual Vehicle Revenue Hours	Average Fleet Age in Years ^a
Demand Response	1	-	\$25,034	\$107	\$241,875	1,443	8,121	222	6.2
Bus	2	-	\$203,401	\$1,928	\$0	7,319	58,525	2,396	6.2
Total	3	-	\$228,435	\$2,035	\$241,875	8,762	66,646	2,618	

Performance Measures

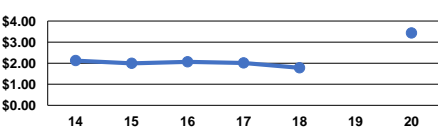
Service Efficiency

Mode	Operating Expenses per Vehicle Revenue Mile	Operating Expenses per Vehicle Revenue Hour
Demand Response	\$3.08	\$112.77
Bus	\$3.48	\$84.89
Total	\$3.43	\$87.26

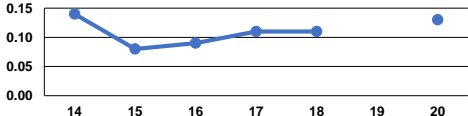
Service Effectiveness

Mode	Operating Expenses per Unlinked Passenger Trip	Unlinked Trips per Vehicle Revenue Mile	Unlinked Trips per Vehicle Revenue Hour
Demand Response	\$17.35	0.2	6.5
Bus	\$27.79	0.1	3.1
Total	\$26.07	0.1	3.3

Operating Expense per Vehicle Revenue Mile: Agency Total



Unlinked Passenger Trips per Vehicle Revenue Mile: Agency Total



Notes:

^aDemand Response - Taxi (DT) and non-dedicated fleets do not report fleet age data.