

General Information

Urbanized Area Statistics - 2010 Census

Sioux City, IA-NE-SD
54 Square Miles
106,494 Population
292 Pop. Rank out of 498 UZAs
Other UZAs Served
0 Iowa Non-UZA

Service Consumption

3,434,496 Annual Passenger Miles (PMT)
731,991 Annual Unlinked Trips (UPT)
2,562 Average Weekday Unlinked Trips
1,409 Average Saturday Unlinked Trips
0 Average Sunday Unlinked Trips

Database Information

NTDID: 70012
Reporter Type: Full Reporter
Asset Type: Tier II
Sponsor NTDID:

Service Area Statistics

53 Square Miles
122,128 Population

Service Supplied

741,842 Annual Vehicle Revenue Miles (VRM)
53,537 Annual Vehicle Revenue Hours (VRH)
31 Vehicles Operated in Maximum Service (VOMS)
42 Vehicles Available for Maximum Service (VAMS)

Assets

Revenue Vehicles 40
Service Vehicles 2
Facilities 2
Track Miles
Lane Miles

Modal Characteristics

Modal Overview	Vehicles Operated in Maximum Service		Uses of Capital Funds				
	Directly Operated	Purchased Transportation	Revenue Vehicles	Systems and Guideways	Facilities and Stations	Other	Total
Demand Response	-	12 ¹	\$75,314	\$0	\$0	\$0	\$75,314
Bus	19	-	\$849,647	\$0	\$469,321	\$0	\$1,318,968
Total	19	12	\$924,961	\$0	\$469,321	\$0	\$1,394,282

Operation Characteristics

Mode	Operating Expenses	Fare Revenues	Uses of Capital Funds	Annual Passenger Miles	Annual Unlinked Trips	Annual Vehicle Revenue Miles	Annual Vehicle Revenue Hours
Demand Response	\$908,729 ¹	\$121,338 ¹	\$75,314	196,378	33,368	167,930	14,551
Bus	\$4,354,645	\$579,898	\$1,318,968	3,238,118	698,623	573,912	38,986
Total	\$5,263,374	\$701,236	\$1,394,282	3,434,496	731,991	741,842	53,537

Performance Measures

Service Efficiency

Mode	Operating Expenses per Vehicle Revenue Mile	Operating Expenses per Vehicle Revenue Hour	Mode
Demand Response	\$5.41	\$62.45	Demand Response
Bus	\$7.59	\$111.70	Bus
Total	\$7.10	\$98.31	Total

Operating Expenses per Passenger Mile

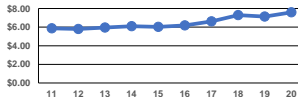
Operating Expenses per Mile

Demand Response	\$4.63
Bus	\$1.34
Total	\$1.53

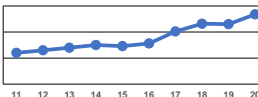
Service Effectiveness

Operating Expenses per Unlinked Passenger Trip	Unlinked Trips per Vehicle Revenue Mile	Unlinked Trips per Vehicle Revenue Hour
\$27.23	0.2	2.3
\$6.23	1.2	17.9
\$7.19	1.0	13.7

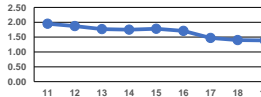
Operating Expense per Vehicle Revenue Mile: Bus



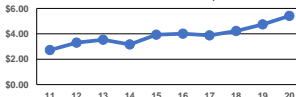
Operating Expense per Passenger Mile: Bus



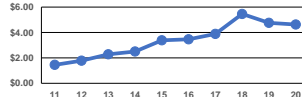
Unlinked Passenger Trip per Vehicle Revenue Mile: Bus



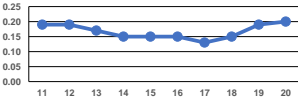
Operating Expense per Vehicle Revenue Mile: Demand Response



Operating Expense per Passenger Mile: Demand Response



Unlinked Passenger Trip per Vehicle Revenue Mile: Demand Response



Notes:

¹Demand Response - Taxi (DT) and non-dedicated fleets do not report fleet age data.

¹Includes data for a contract with another reporter.

^{*}This agency has a purchased transportation relationship in which they buy service from Siouland Regional Transit System (NTDID: 70129), and in which the data are captured in this report for mode DR/PT.

Financial Information

Sources of Operating Funds Expended

Fares and Directly Generated	\$803,977	15.3%
Local Funds	\$2,116,303	40.2%
State Funds	\$368,104	7.0%
Federal Assistance	\$1,974,990	37.5%

Total Operating Funds Expended \$5,263,374 100.0%

Sources of Capital Funds Expended

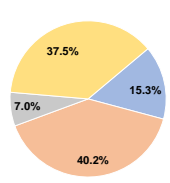
Fares and Directly Generated	\$0	0.0%
Local Funds	\$428,150	30.7%
State Funds	\$195,064	14.0%
Federal Assistance	\$771,068	55.3%

Total Capital Funds Expended \$1,394,282 100.0%

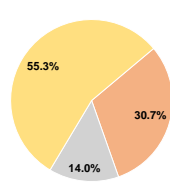
Summary of Operating Expenses (OE)

Labor	\$2,997,865	57.0%
Materials and Supplies	\$699,134	13.3%
Purchased Transportation	\$756,260	14.4%
Other Operating Expenses	\$810,115	15.4%
Total Operating Expenses	\$5,263,374	100.0%
Reconciling OE Cash Expenditures	\$0	
Purchased Transportation (Reported Separately)	\$0	

Operating Funding Sources



Capital Funding Sources



Performance Measure Targets - 2021

Performance Measure - Asset Type - Target % not in State of Good Repair
Equipment - Trucks and other Rubber Tire Vehicles - 100%
Facility - Administrative / Maintenance Facilities - 0%
Facility - Passenger / Parking Facilities - 0%
Rolling Stock - BU - Bus - 45%
Rolling Stock - CU - Cutaway - 0%