

General Information

Federally Recognized Tribal Statistical Areas

Winnebago Reservation and Off-Reservation Trust Land, NE--IA

Service Consumption

10,227 Annual Unlinked Trips (UPT)

Service Supplied

131,353 Annual Vehicle Revenue Miles (VRM)
2,613 Annual Vehicle Revenue Hours (VRH)

Database Information

NTDID: 70004
Reporter Type: Tribal Reporter

Asset Type:
Sponsor NTDID:

Tier II

Assets

Revenue Vehicles	5
Service Vehicles	0
Facilities	1

Financial Information

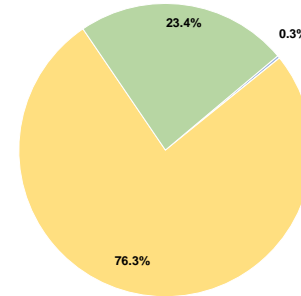
Sources of Operating Funds Expended

Fare Revenues	\$1,815	0.3%
Local Funds	\$0	0.0%
State Funds	\$0	0.0%
Federal Assistance	\$453,714	76.3%
Other Funds	\$139,162	23.4%
Total Operating Funds Expended	\$594,691	100.0%

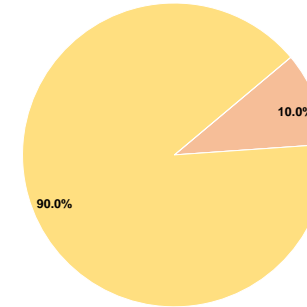
Sources of Capital Funds Expended

Fare Revenues	\$0	0.0%
Local Funds	\$3,579	10.0%
State Funds	\$0	0.0%
Federal Assistance	\$32,201	90.0%
Other Funds	\$0	0.0%
Total Capital Funds Expended	\$35,780	100.0%

Operating Funding Sources



Capital Funding Sources



Performance Measure Targets - 2021

Performance Measure - Asset Type - Target % not in State of Good Repair
Facility - Administrative / Maintenance Facilities - 0%
Rolling Stock - CU - Cutaway - 0%
Rolling Stock - VN - Van - 0%

Modal Characteristics

Operation Characteristics

Vehicles Operated at Maximum Service

Mode	Directly Operated	Purchased Transportation	Operating Expenses	Fare Revenues	Uses of Capital Funds	Annual Unlinked Trips	Annual Vehicle Revenue Miles	Annual Vehicle Revenue Hours	Average Fleet Age in Years ^a
Demand Response	1	-	\$170,312	\$1,815	\$8,996	1,091	33,026	1,101	1.0
Bus	2	-	\$424,379	\$0	\$26,784	9,136	98,327	1,512	0.7
Total	3	-	\$594,691	\$1,815	\$35,780	10,227	131,353	2,613	

Performance Measures

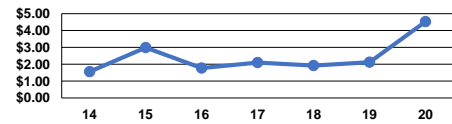
Service Efficiency

Mode	Operating Expenses per Vehicle Revenue Mile	Operating Expenses per Vehicle Revenue Hour
Demand Response	\$5.16	\$154.69
Bus	\$4.32	\$280.67
Total	\$4.53	\$227.59

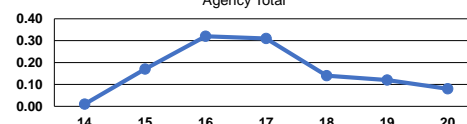
Service Effectiveness

Mode	Operating Expenses per Unlinked Passenger Trip	Unlinked Trips per Vehicle Revenue Mile	Unlinked Trips per Vehicle Revenue Hour
Demand Response	\$156.11	0.0	1.0
Bus	\$46.45	0.1	6.0
Total	\$58.15	0.1	3.9

Operating Expense per Vehicle Revenue Mile: Agency Total



Unlinked Passenger Trips per Vehicle Revenue Mile: Agency Total



Notes:

^aDemand Response - Taxi (DT) and non-dedicated fleets do not report fleet age data.

