

General Information

Urbanized Area (UZA) Statistics - 2010 Census

Wichita Falls, TX
50 Square Miles
99,437 Population
301 Pop. Rank out of 498 UZAs

Other UZAs Served

0 Texas Non-UZA

Service Area Statistics

71 Square Miles
104,553 Population

Service Consumption

315,058 Annual Unlinked Trips (UPT)

Service Supplied

565,401 Annual Vehicle Revenue Miles (VRM)
36,094 Annual Vehicle Revenue Hours (VRH)

Database Information

NTDID: 60035
Reporter Type: Reduced Reporter
Asset Type: Tier II
Sponsor NTDID:

Financial Information

Sources of Operating Funds Expended

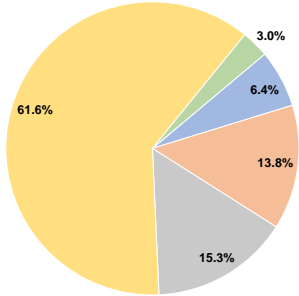
Fare Revenues	\$251,550	6.4%
Local Funds	\$544,166	13.8%
State Funds	\$604,894	15.3%
Federal Assistance	\$2,437,041	61.6%
Other Funds	\$119,414	3.0%
Total Operating Funds Expended	\$3,957,065	100.0%

Sources of Capital Funds Expended

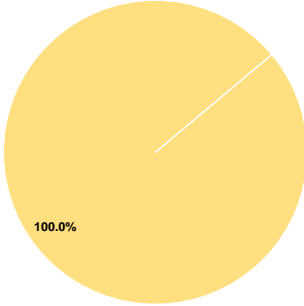
Fare Revenues	\$0	0.0%
Local Funds	\$0	0.0%
State Funds	\$0	0.0%
Federal Assistance	\$2,493,292	100.0%
Other Funds	\$0	0.0%
Total Capital Funds Expended	\$2,493,292	100.0%

Assets	
Revenue Vehicles	18
Service Vehicles	1
Facilities	1

Operating Funding Sources



Capital Funding Sources



Performance Measure Targets - 2021

Performance Measure - Asset Type - Target % not in State of Good Repair
Equipment - Trucks and other Rubber Tire Vehicles - 0%
Facility - Passenger / Parking Facilities - 0%
Rolling Stock - BU - Bus - 10%
Rolling Stock - CU - Cutaway - 0%

Modal Characteristics

Operation Characteristics

Vehicles Operated at Maximum Service

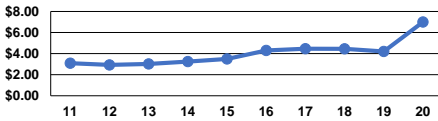
Mode	Directly Operated	Purchased Transportation	Operating Expenses	Fare Revenues	Uses of Capital Funds	Annual Unlinked Trips	Annual Vehicle Revenue Miles	Annual Vehicle Revenue Hours	Average Fleet Age in Years ^a
Bus	8	-	\$3,957,065	\$251,550	\$2,493,292	315,058	565,401	36,094	7.1
Total	8	-	\$3,957,065	\$251,550	\$2,493,292	315,058	565,401	36,094	

Performance Measures

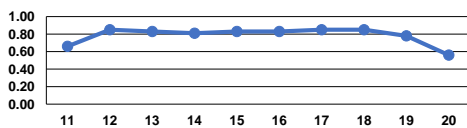
Service Efficiency

Mode	Operating Expenses per Vehicle Revenue Mile	Operating Expenses per Vehicle Revenue Hour
Bus	\$7.00	\$109.63
Total	\$7.00	\$109.63

Operating Expense per Vehicle Revenue Mile: Bus



Unlinked Passenger Trips per Vehicle Revenue Mile: Bus



Service Effectiveness

Mode	Operating Expenses per Unlinked Passenger Trip	Unlinked Trips per Vehicle Revenue Mile	Unlinked Trips per Vehicle Revenue Hour
Bus	\$12.56	0.6	8.7
Total	\$12.56	0.6	8.7

Notes:

^aDemand Response - Taxi (DT) and non-dedicated fleets do not report fleet age data.