

General Information

Urbanized Area (UZA) Statistics - 2010 Census

Cincinnati, OH-KY-IN

788 Square Miles

1,624,827 Population

30 Pop. Rank out of 498 UZAs

Other UZAs Served

0 Ohio Non-UZA, 59 Dayton, OH, 308 Middletown, OH

Service Area Statistics

72 Square Miles

118,747 Population

Service Consumption

33,793 Annual Unlinked Trips (UPT)

Service Supplied

314,425 Annual Vehicle Revenue Miles (VRM)

22,758 Annual Vehicle Revenue Hours (VRH)

Database Information

NTDID: 50200

Reporter Type: Reduced Reporter

Asset Type: Tier II

Sponsor NTDID:

Financial Information

Sources of Operating Funds Expended

Fare Revenues \$70,790 8.9%

Local Funds \$524,705 66.2%

State Funds \$197,121 24.9%

Federal Assistance \$0 0.0%

Other Funds \$0 0.0%

Total Operating Funds Expended \$792,616 100.0%

Sources of Capital Funds Expended

Fare Revenues \$0 0.0%

Local Funds \$109,068 37.0%

State Funds \$0 0.0%

Federal Assistance \$185,996 63.0%

Other Funds \$0 0.0%

Total Capital Funds Expended \$295,064 100.0%

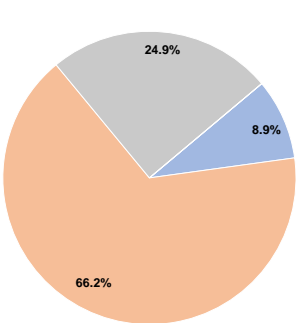
Assets

Revenue Vehicles 22

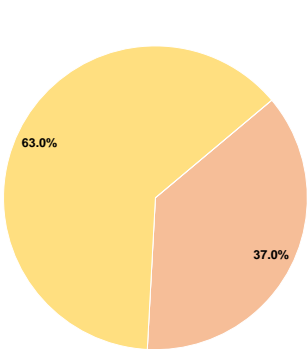
Service Vehicles 0

Facilities 0

Operating Funding Sources



Capital Funding Sources



Performance Measure Targets - 2021

Performance Measure - Asset Type - Target % not in State of Good Repair  
Rolling Stock - CU - Cutaway - 0%

Modal Characteristics

Operation Characteristics

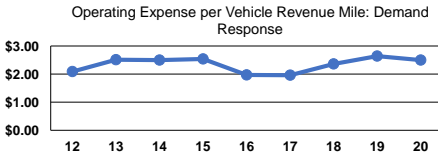
Vehicles Operated at Maximum Service

Mode	Directly Operated	Purchased Transportation	Operating Expenses	Fare Revenues	Uses of Capital Funds	Annual Unlinked Trips	Annual Vehicle Revenue Miles	Annual Vehicle Revenue Hours	Average Fleet Age in Years <sup>a</sup>
Demand Response	-	19	\$786,616	\$70,790	\$295,064	33,793	314,425	22,758	5.7
Total	-	19	\$786,616	\$70,790	\$295,064	33,793	314,425	22,758	

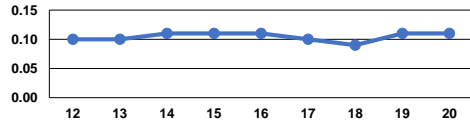
Performance Measures

Service Efficiency

Mode	Operating Expenses per Vehicle Revenue Mile	Operating Expenses per Vehicle Revenue Hour
Demand Response	\$2.50	\$34.56
Total	\$2.50	\$34.56



Unlinked Passenger Trips per Vehicle Revenue Mile: Demand Response



Service Effectiveness

Mode	Operating Expenses per Unlinked Passenger Trip	Unlinked Trips per Vehicle Revenue Mile	Unlinked Trips per Vehicle Revenue Hour
Demand Response	\$23.28	0.1	1.5
Total	\$23.28	0.1	1.5

Notes:

<sup>a</sup>Demand Response - Taxi (DT) and non-dedicated fleets do not report fleet age data.