

General Information

Urbanized Area Statistics - 2010 Census
Atlanta, GA
2,645 **Square Miles**
4,515,419 **Population**
9 **Pop. Rank out of 498 UZAs**

Service Consumption
9,630,693 **Annual Passenger Miles (PMT)**
1,779,703 **Annual Unlinked Trips (UPT)**
6,209 **Average Weekday Unlinked Trips**
2,112 **Average Saturday Unlinked Trips**
1,742 **Average Sunday Unlinked Trips**

Database Information
NTDID: 40078
Reporter Type: Full Reporter
Asset Type: Tier II
Sponsor NTDID:

Service Area Statistics
210 **Square Miles**
688,078 **Population**

Service Supplied
3,706,317 **Annual Vehicle Revenue Miles (VRM)**
262,483 **Annual Vehicle Revenue Hours (VRH)**
96 **Vehicles Operated in Maximum Service (VOMS)**
119 **Vehicles Available for Maximum Service (VAMS)**

Assets
Revenue Vehicles 121
Service Vehicles 9
Facilities 13
Track Miles -
Lane Miles -

Modal Characteristics

Modal Overview	Vehicles Operated in Maximum Service		Uses of Capital Funds				
	Directly Operated	Purchased Transportation	Revenue Vehicles	Systems and Guideways	Facilities and Stations	Other	Total
Mode							
Commuter Bus	-	19 ¹	\$0	\$0	\$524,072	\$0	\$524,072
Demand Response	-	26	\$0	\$0	\$0	\$0	\$0
Bus	-	51	\$0	\$1,230,674	\$0	\$0	\$1,230,674
Total	-	96	\$0	\$1,230,674	\$524,072	\$0	\$1,754,746

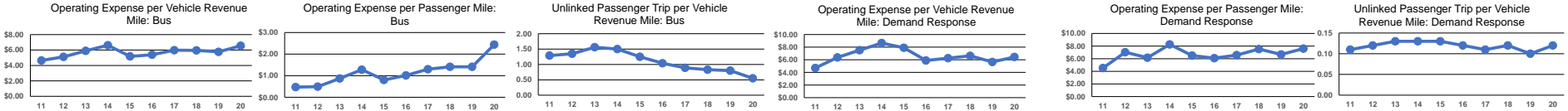
Operation Characteristics

Mode	Operating Expenses	Fare Revenues	Uses of Capital Funds	Annual Passenger Miles	Annual Unlinked Trips	Annual Vehicle Revenue Miles	Annual Vehicle Revenue Hours
Commuter Bus	\$1,164,479 ¹	\$296,339 ¹	\$524,072	1,076,004	59,778	167,957	6,513
Demand Response	\$3,363,833	\$52,088	\$0	443,046	64,167	521,231	44,415
Bus	\$19,787,290	\$1,721,077	\$1,230,674	8,111,643	1,655,758	3,017,129	211,555
Total	\$24,315,602	\$2,069,504	\$1,754,746	9,630,693	1,779,703	3,706,317	262,483

Performance Measures

Service Efficiency			Service Effectiveness		
Mode	Operating Expenses per Vehicle Revenue Mile	Operating Expenses per Vehicle Revenue Hour	Mode	Operating Expenses per Passenger Mile	Operating Expenses per Unlinked Passenger Trip
Commuter Bus	\$6.93	\$178.79	Commuter Bus	\$1.08	\$19.48
Demand Response	\$6.45	\$75.74	Demand Response	\$7.59	\$52.42
Bus	\$6.56	\$93.53	Bus	\$2.44	\$11.95
Total	\$6.56	\$92.64	Total	\$2.52	\$13.66

Mode	Unlinked Trips per Vehicle Revenue Mile	Unlinked Trips per Vehicle Revenue Hour
Commuter Bus	0.4	9.2
Demand Response	0.1	1.4
Bus	0.5	7.8
Total	0.5	6.8



Notes:
*Demand Response - Taxi (DT) and non-dedicated fleets do not report fleet age data.
*Excludes data for purchased transportation filed separately.
*This agency has a purchased transportation relationship in which they sell service to Georgia State Road and Tollway Authority (NTDID: 40264), and in which the data are captured in another report for mode CB/PT.

Financial Information

Sources of Operating Funds Expended
Fares and Directly Generated \$2,189,239 8.6%
Local Funds \$12,983,088 51.0%
State Funds \$0 0.0%
Federal Assistance \$10,263,861 40.4%

Total Operating Funds Expended \$25,436,188 100.0%

Sources of Capital Funds Expended
Fares and Directly Generated \$0 0.0%
Local Funds \$669,464 38.2%
State Funds \$0 0.0%
Federal Assistance \$1,085,282 61.8%

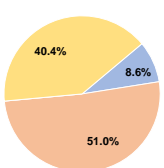
Total Capital Funds Expended \$1,754,746 100.0%

Summary of Operating Expenses (OE)

Labor \$1,108,318 4.6%
Materials and Supplies \$2,716,628 11.2%
Purchased Transportation \$18,849,736 77.5%
Other Operating Expenses \$1,640,920 6.7%
Total Operating Expenses \$24,315,602 100.0%
Reconciling OE Cash Expenditures \$0
Purchased Transportation (Reported Separately) \$1,120,586 *

Fixed Guideway Directional Route Miles	Vehicles Available for Maximum Service	Vehicles Operated in Maximum Service	Percent Spare Vehicles	Average Fleet Age in Years ^a
0.0	21	19 ¹	10.5%	12.4
0.0	28	26	7.7%	9.1
0.0	70	51	37.3%	4.7
0.0	119	96	19.3%	

Operating Funding Sources



Capital Funding Sources

