

General Information

Urbanized Area (UA) Statistics - 2010 Census

Gadsden, AL
 72 **Square Miles**
 64,172 **Population**
 426 **Pop. Rank out of 498 UZAs**

Service Area Statistics

37 **Square Miles**
 61,709 **Population**

Service Consumption

66,911 **Annual Unlinked Trips (UPT)**

Service Supplied

265,971 **Annual Vehicle Revenue Miles (VRM)**
 19,422 **Annual Vehicle Revenue Hours (VRH)**

Database Information

NTDID: 40049
 Reporter Type: Reduced Reporter

Asset Type: Tier II
 Sponsor NTDID:

Financial Information

Sources of Operating Funds Expended

Fare Revenues	\$23,008	2.6%
Local Funds	\$292,421	33.0%
State Funds	\$0	0.0%
Federal Assistance	\$571,192	64.4%
Other Funds	\$0	0.0%
Total Operating Funds Expended	\$886,621	100.0%

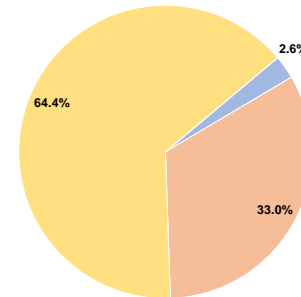
Sources of Capital Funds Expended

Fare Revenues	\$23,947	40.2%
Local Funds	\$7,113	12.0%
State Funds	\$0	0.0%
Federal Assistance	\$28,453	47.8%
Other Funds	\$0	0.0%
Total Capital Funds Expended	\$59,513	100.0%

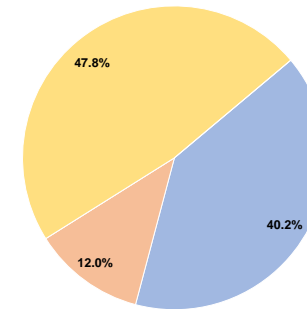
Assets

Revenue Vehicles	18
Service Vehicles	2
Facilities	0

Operating Funding Sources



Capital Funding Sources



Performance Measure Targets - 2021

Performance Measure - Asset Type - Target % not in State of Good Repair
 Equipment - Automobiles - 0%
 Equipment - Trucks and other Rubber Tire Vehicles - 0%
 Rolling Stock - CU - Cutaway - 0%

Modal Characteristics

Operation Characteristics

Vehicles Operated at Maximum Service

Mode	Directly Operated	Purchased Transportation	Operating Expenses	Fare Revenues	Uses of Capital Funds	Annual Unlinked Trips	Annual Vehicle Revenue Miles	Annual Vehicle Revenue Hours	Average Fleet Age in Years ^a
Demand Response	7	-	\$441,275	\$36,949	\$36,271	24,889	150,115	10,936	4.1
Bus	6	-	\$445,346	\$10,006	\$23,242	42,022	115,856	8,486	3.5
Total	13	-	\$886,621	\$46,955	\$59,513	66,911	265,971	19,422	

Performance Measures

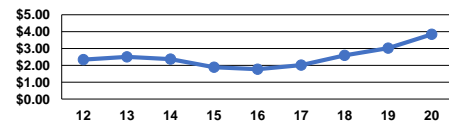
Service Efficiency

Mode	Operating Expenses per Vehicle Revenue Mile	Operating Expenses per Vehicle Revenue Hour
Demand Response	\$2.94	\$40.35
Bus	\$3.84	\$52.48
Total	\$3.33	\$45.65

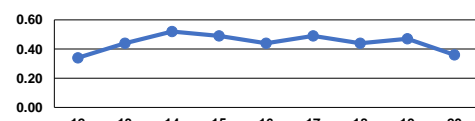
Service Effectiveness

Mode	Operating Expenses per Unlinked Passenger Trip	Unlinked Trips per Vehicle Revenue Mile	Unlinked Trips per Vehicle Revenue Hour
Demand Response	\$17.73	0.2	2.3
Bus	\$10.60	0.4	5.0
Total	\$13.25	0.3	3.4

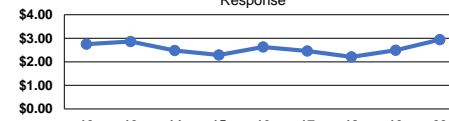
Operating Expense per Vehicle Revenue Mile: Bus



Unlinked Passenger Trips per Vehicle Revenue Mile: Bus



Operating Expense per Vehicle Revenue Mile: Demand Response



Unlinked Passenger Trips per Vehicle Revenue Mile: Demand Response



Notes:

^aDemand Response - Taxi (DT) and non-dedicated fleets do not report fleet age data.