

General Information

Urbanized Area (UZA) Statistics - 2010 Census

Aberdeen-Bel Air South-Bel Air North, MD
131 **Square Miles**
213,751 **Population**
169 **Pop. Rank out of 498 UZAs**

Other UZAs Served

0 Maryland Non-UZA

Service Area Statistics

133 **Square Miles**
258,088 **Population**

Service Consumption

308,049 **Annual Unlinked Trips (UPT)**

Service Supplied

881,565 **Annual Vehicle Revenue Miles (VRM)**
51,885 **Annual Vehicle Revenue Hours (VRH)**

Database Information

NTDID: 30074
Reporter Type: Reduced Reporter
Asset Type: Tier II
Sponsor NTDID: 3R03

Financial Information

Sources of Operating Funds Expended

Fare Revenues	\$260,447	5.0%
Local Funds	\$2,182,158	42.1%
State Funds	\$568,680	11.0%
Federal Assistance	\$2,164,641	41.8%
Other Funds	\$1,600	0.0%
Total Operating Funds Expended	\$5,177,526	100.0%

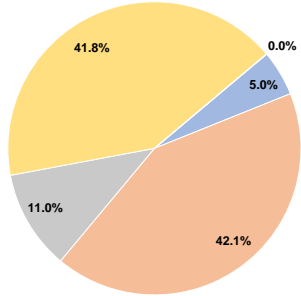
Sources of Capital Funds Expended

Fare Revenues	\$0	0.0%
Local Funds	\$44,131	11.1%
State Funds	\$35,575	8.9%
Federal Assistance	\$318,826	80.0%
Other Funds	\$0	0.0%
Total Capital Funds Expended	\$398,532	100.0%

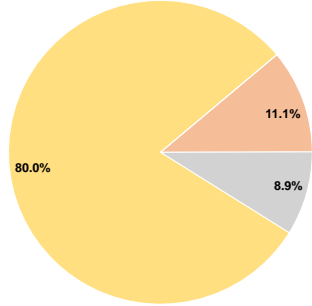
Assets

Revenue Vehicles	34
Service Vehicles	3
Facilities	2

Operating Funding Sources



Capital Funding Sources



Performance Measure Targets - 2021

Performance Measure - Asset Type - Target % not in State of Good Repair
Equipment - Automobiles - 70%
Equipment - Trucks and other Rubber Tire Vehicles - 44%
Facility - Administrative / Maintenance Facilities - 0%
Facility - Passenger / Parking Facilities - 0%
Rolling Stock - AB - Articulated Bus - 0%
Rolling Stock - AO - Automobile - 64%
Rolling Stock - BU - Bus - 18%
Rolling Stock - CU - Cutaway - 32%
Rolling Stock - FB - Ferryboat - 67%
Rolling Stock - MV - Minivan - 0%
Rolling Stock - SV - Sports Utility Vehicle - 0%
Rolling Stock - VN - Van - 25%

Modal Characteristics

Operation Characteristics

Vehicles Operated at Maximum Service

Mode	Directly Operated	Purchased Transportation	Operating Expenses	Fare Revenues	Uses of Capital Funds	Annual Unlinked Trips	Annual Vehicle Revenue Miles	Annual Vehicle Revenue Hours	Average Fleet Age in Years ^a
Demand Response	14	-	\$1,324,158	\$74,235	\$0	46,693	357,938	23,139	8.6
Bus	12	-	\$3,853,368	\$186,212	\$398,532	261,356	523,627	28,746	7.8
Total	26	-	\$5,177,526	\$260,447	\$398,532	308,049	881,565	51,885	

Performance Measures

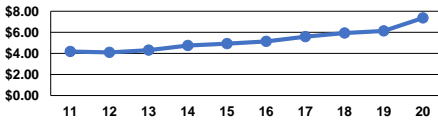
Service Efficiency

Mode	Operating Expenses per Vehicle Revenue Mile	Operating Expenses per Vehicle Revenue Hour
Demand Response	\$3.70	\$57.23
Bus	\$7.36	\$134.05
Total	\$5.87	\$99.79

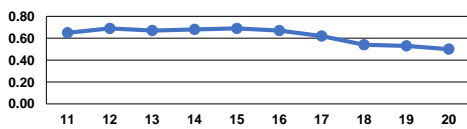
Service Effectiveness

Mode	Operating Expenses per Unlinked Passenger Trip	Unlinked Trips per Vehicle Revenue Mile	Unlinked Trips per Vehicle Revenue Hour
Demand Response	\$28.36	0.1	2.0
Bus	\$14.74	0.5	9.1
Total	\$16.81	0.3	5.9

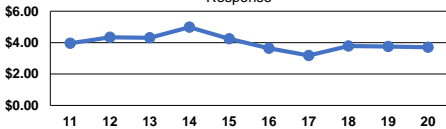
Operating Expense per Vehicle Revenue Mile: Bus



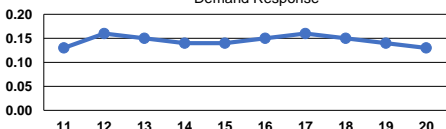
Unlinked Passenger Trips per Vehicle Revenue Mile: Bus



Operating Expense per Vehicle Revenue Mile: Demand Response



Unlinked Passenger Trips per Vehicle Revenue Mile: Demand Response



Notes:

^aDemand Response - Taxi (DT) and non-dedicated fleets do not report fleet age data.