

General Information

Urbanized Area Statistics - 2010 Census

Baltimore, MD
717 Square Miles
2,203,663 Population
19 Pop. Rank out of 498 UZAs

Other UZAs Served

0 Maryland Non-UZA

Service Consumption

3,497,176 Annual Passenger Miles (PMT)
575,978 Annual Unlinked Trips (UPT)
1,798 Average Weekday Unlinked Trips
1,345 Average Saturday Unlinked Trips
612 Average Sunday Unlinked Trips

Database Information

NTDID: 30048
Reporter Type: Full Reporter
Asset Type: Tier II
Sponsor NTDID:

Service Area Statistics

251 Square Miles
321,113 Population

Service Supplied

2,023,042 Annual Vehicle Revenue Miles (VRM)
136,522 Annual Vehicle Revenue Hours (VRH)
67 Vehicles Operated in Maximum Service (VOMS)
84 Vehicles Available for Maximum Service (VAMS)

Assets

Revenue Vehicles 84
Service Vehicles 15
Facilities 3
Track Miles
Lane Miles

Modal Characteristics

Modal Overview	Vehicles Operated in Maximum Service		Uses of Capital Funds				
	Directly Operated	Purchased Transportation	Revenue Vehicles	Systems and Guideways	Facilities and Stations	Other	Total
	Mode						
Demand Response	-	40	\$285,230	\$0	\$0	\$0	\$285,230
Bus	-	27	\$736,822	\$0	\$0	\$72,578	\$809,400
Total	-	67	\$1,022,052	\$0	\$0	\$72,578	\$1,094,630

Operation Characteristics

Mode	Operating Expenses	Fare Revenues	Uses of Capital Funds	Annual Passenger Miles	Annual Unlinked Trips	Annual Vehicle Revenue Miles	Annual Vehicle Revenue Hours
Demand Response	\$3,795,543	\$265,656	\$285,230	735,718	81,374	828,013	50,986
Bus	\$10,284,874	\$417,890	\$809,400	2,761,458	494,604	1,195,029	85,536
Total	\$14,080,417	\$683,546	\$1,094,630	3,497,176	575,978	2,023,042	136,522

Performance Measures

Service Efficiency

Mode	Operating Expenses per Vehicle Revenue Mile	Operating Expenses per Vehicle Revenue Hour
Demand Response	\$4.58	\$74.44
Bus	\$8.61	\$120.24
Total	\$6.96	\$103.14

Sources of Operating Funds Expended

Fares and Directly Generated \$791,554 5.3%
Local Funds \$9,972,392 67.3%
State Funds \$4,061,771 27.4%
Federal Assistance \$0 0.0%

Total Operating Funds Expended \$14,825,717 100.0%

Sources of Capital Funds Expended

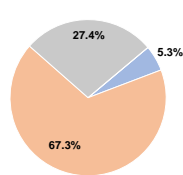
Fares and Directly Generated \$0 0.0%
Local Funds \$517,630 47.3%
State Funds \$73,000 6.7%
Federal Assistance \$504,000 46.0%

Total Capital Funds Expended \$1,094,630 100.0%

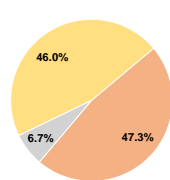
Summary of Operating Expenses (OE)

Labor \$329,713 2.3%
Materials and Supplies \$290 0.0%
Purchased Transportation \$13,750,414 97.7%
Other Operating Expenses \$0 0.0%
Total Operating Expenses \$14,080,417 100.0%
Reconciling OE Cash Expenditures \$745,300
Purchased Transportation (Reported Separately) \$0

Operating Funding Sources

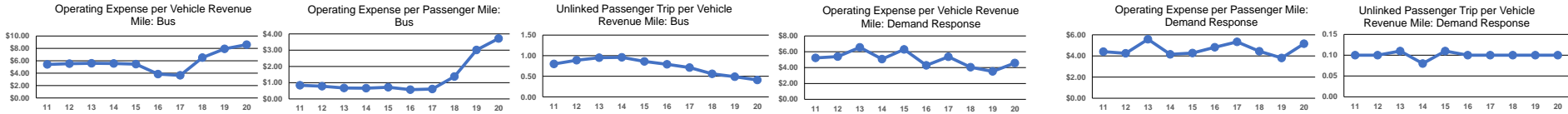


Capital Funding Sources



Performance Measure Targets - 2021

Performance Measure - Asset Type - Target % not in State of Good Repair
Equipment - Automobiles - 70%
Equipment - Trucks and other Rubber Tire Vehicles - 44%
Facility - Administrative / Maintenance Facilities - 0%
Facility - Passenger / Parking Facilities - 0%
Rolling Stock - AB - Articulated Bus - 0%
Rolling Stock - AO - Automobile - 64%
Rolling Stock - BU - Bus - 18%
Rolling Stock - CU - Cutaway - 32%
Rolling Stock - FB - Ferryboat - 67%
Rolling Stock - MV - Minivan - 0%
Rolling Stock - SV - Sports Utility Vehicle - 0%
Rolling Stock - VN - Van - 25%



Notes:

^aDemand Response - Taxi (DT) and non-dedicated fleets do not report fleet age data.