

General Information

Urbanized Area Statistics - 2010 Census

Boston, MA-NH-RI
1,873 Square Miles
4,181,019 Population
10 Pop. Rank out of 498 UZAs

Service Consumption

3,459,920 Annual Passenger Miles (PMT)
622,070 Annual Unlinked Trips (UPT)
2,272 Average Weekday Unlinked Trips
469 Average Saturday Unlinked Trips
44 Average Sunday Unlinked Trips

Database Information

NTDID: 10118
Reporter Type: Full Reporter
Asset Type: Tier II
Sponsor NTDID:

Service Area Statistics

272 Square Miles
327,217 Population

Service Supplied

1,998,581 Annual Vehicle Revenue Miles (VRM)
140,244 Annual Vehicle Revenue Hours (VRH)
94 Vehicles Operated in Maximum Service (VOMS)
113 Vehicles Available for Maximum Service (VAMS)

Assets

Revenue Vehicles 132
Service Vehicles 11
Facilities 1
Track Miles
Lane Miles

Modal Characteristics

Modal Overview

Vehicles Operated
in Maximum Service

Uses of Capital Funds

Mode	Directly Operated		Purchased Transportation	Revenue Vehicles	Systems and Guideways	Facilities and Stations	Other	Total
Demand Response	-		54	\$0	\$0	\$0	\$0	\$0
Bus	-		40	\$0	\$208,114	\$61,625	\$0	\$269,739
Total	-		94	\$0	\$208,114	\$61,625	\$0	\$269,739

Operation Characteristics

Mode	Operating Expenses	Fare Revenues	Uses of Capital Funds	Annual Passenger Miles	Annual Unlinked Trips	Annual Vehicle Revenue Miles	Annual Vehicle Revenue Hours
Demand Response	\$4,600,699	\$189,887	\$0	1,014,858	147,082	787,761	54,454
Bus	\$5,704,813	\$562,424	\$269,739	2,445,062	474,988	1,210,820	85,790
Total	\$10,305,512	\$752,311	\$269,739	3,459,920	622,070	1,998,581	140,244

Performance Measures

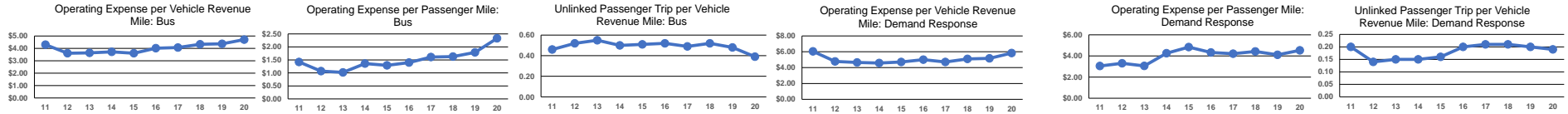
Service Efficiency

Mode	Operating Expenses per Vehicle Revenue Mile	Operating Expenses per Vehicle Revenue Hour
Demand Response	\$5.84	\$84.49
Bus	\$4.71	\$66.50
Total	\$5.16	\$73.48

Mode	Operating Expenses per Passenger Mile
Demand Response	\$4.53
Bus	\$2.33
Total	\$2.98

Service Effectiveness

Operating Expenses per Unlinked Passenger Trip	Unlinked Trips per Vehicle Revenue Mile	Unlinked Trips per Vehicle Revenue Hour
\$31.28	0.2	2.7
\$12.01	0.4	5.5
\$16.57	0.3	4.4



Notes:

*Demand Response - Taxi (DT) and non-dedicated fleets do not report fleet age data.

Financial Information

Sources of Operating Funds Expended

Fares and Directly Generated \$1,228,579 11.7%
Local Funds \$3,876,600 37.0%
State Funds \$3,541,006 33.8%
Federal Assistance \$1,824,016 17.4%

Total Operating Funds Expended \$10,470,201 100.0%

Sources of Capital Funds Expended

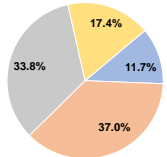
Fares and Directly Generated \$0 0.0%
Local Funds \$8 0.0%
State Funds \$29,252 10.8%
Federal Assistance \$240,479 89.2%

Total Capital Funds Expended \$269,739 100.0%

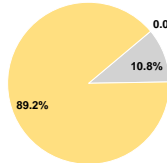
Summary of Operating Expenses (OE)

Labor \$2,436,747 23.6%
Materials and Supplies \$819,832 8.0%
Purchased Transportation \$5,692,737 55.2%
Other Operating Expenses \$1,356,196 13.2%
Total Operating Expenses \$10,305,512 100.0%
Reconciling OE Cash Expenditures \$164,689
Purchased Transportation (Reported Separately) \$0

Operating Funding Sources



Capital Funding Sources



Performance Measure Targets - 2021

Performance Measure - Asset Type - Target % not in State of Good Repair
Equipment - Automobiles - 100%
Equipment - Trucks and other Rubber Tire Vehicles - 50%
Facility - Administrative / Maintenance Facilities - 0%
Rolling Stock - AO - Automobile - 100%
Rolling Stock - CU - Cutaway - 25%
Rolling Stock - VN - Van - 0%