

General Information

Federally Recognized Tribal Statistical Areas

Ketchikan ANVSA, AK

Service Consumption

2,428 Annual Unlinked Trips (UPT)

Service Supplied

3,380 Annual Vehicle Revenue Miles (VRM)

405 Annual Vehicle Revenue Hours (VRH)

Database Information

NTDID: 00239

Reporter Type: Tribal Reporter

Asset Type: Tier II

Sponsor NTDID:

Assets

Revenue Vehicles 5

Service Vehicles 0

Facilities 0

Financial Information

Sources of Operating Funds Expended

Fare Revenues	\$0	0.0%
Local Funds	\$0	0.0%
State Funds	\$0	0.0%
Federal Assistance	\$149,813	100.0%
Other Funds	\$0	0.0%

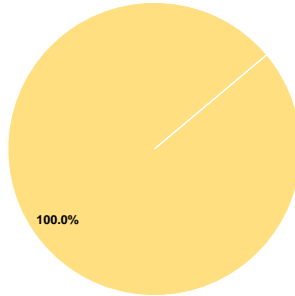
Total Operating Funds Expended \$149,813 100.0%

Sources of Capital Funds Expended

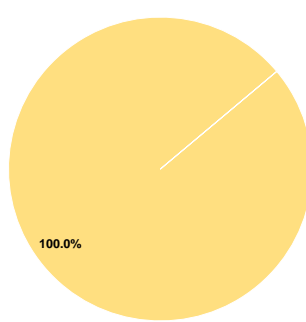
Fare Revenues	\$0	0.0%
Local Funds	\$0	0.0%
State Funds	\$0	0.0%
Federal Assistance	\$78,423	100.0%
Other Funds	\$0	0.0%

Total Capital Funds Expended \$78,423 100.0%

Operating Funding Sources



Capital Funding Sources



Performance Measure Targets - 2021

Performance Measure - Asset Type - Target % not in State of Good Repair

Rolling Stock - BU - Bus - 0%

Rolling Stock - CU - Cutaway - 0%

Rolling Stock - MV - Minivan - 0%

Rolling Stock - VN - Van - 0%

Operation Characteristics

Vehicles Operated at Maximum Service

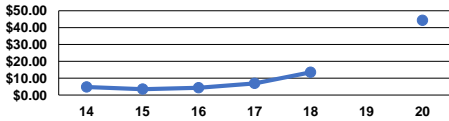
Mode	Directly Operated	Purchased Transportation	Operating Expenses	Fare Revenues	Uses of Capital Funds	Annual Unlinked Trips	Annual Vehicle Revenue Miles	Annual Vehicle Revenue Hours	Average Fleet Age in Years <sup>a</sup>
Demand Response	3	-	\$149,813	\$0	\$78,423	2,428	3,380	405	6.0
Total	3	-	\$149,813	\$0	\$78,423	2,428	3,380	405	

Performance Measures

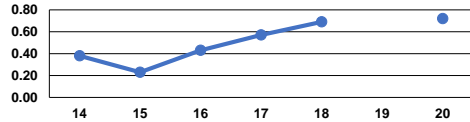
Service Efficiency

Mode	Operating Expenses per Vehicle Revenue Mile	Operating Expenses per Vehicle Revenue Hour
Demand Response	\$44.32	\$369.91
Total	\$44.32	\$369.91

Operating Expense per Vehicle Revenue Mile: Agency Total



Unlinked Passenger Trips per Vehicle Revenue Mile: Agency Total



Service Effectiveness

Mode	Operating Expenses per Unlinked Passenger Trip	Unlinked Trips per Vehicle Revenue Mile	Unlinked Trips per Vehicle Revenue Hour
Demand Response	\$61.70	0.7	6.0
Total	\$61.70	0.7	6.0

Notes:

<sup>a</sup>Demand Response - Taxi (DT) and non-dedicated fleets do not report fleet age data.