

**General Information**

**Federally Recognized Tribal Statistical Areas**

Winnebago Reservation and Off-Reservation Trust Land, NE--IA

**Service Consumption**

33,312 **Annual Unlinked Trips (UPT)**

**Service Supplied**

274,714 **Annual Vehicle Revenue Miles (VRM)**  
6,156 **Annual Vehicle Revenue Hours (VRH)**

**Database Information**

NTDID: 70004

Reporter Type: Tribal Reporter

**Financial Information**

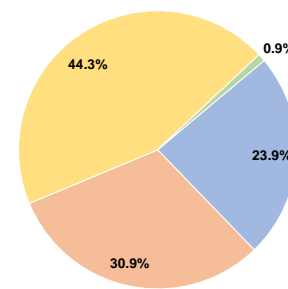
**Sources of Operating Funds Expended**

Fare Revenues	\$139,270	23.9%
Local Funds	\$180,400	30.9%
State Funds	\$0	0.0%
Federal Assistance	\$258,293	44.3%
Other Funds	\$5,126	0.9%
<b>Total Operating Funds Expended</b>	<b>\$583,089</b>	<b>100.0%</b>

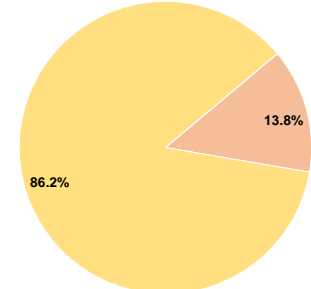
**Sources of Capital Funds Expended**

Fare Revenues	\$0	0.0%
Local Funds	\$26,609	13.8%
State Funds	\$0	0.0%
Federal Assistance	\$166,131	86.2%
Other Funds	\$0	0.0%
<b>Total Capital Funds Expended</b>	<b>\$192,740</b>	<b>100.0%</b>

**Operating Funding Sources**



**Capital Funding Sources**



**Modal Characteristics**

**Operation Characteristics**

**Vehicles Operated at Maximum Service**

Mode	Directly Operated	Purchased Transportation	Operating Expenses	Fare Revenues	Uses of Capital Funds	Annual Unlinked Trips	Annual Vehicle Revenue Miles	Annual Vehicle Revenue Hours	Average Fleet Age in Years <sup>a</sup>
Demand Response	1	-	\$175,407	\$1,770	\$129,980	3,402	70,944	2,460	0.5
Bus	2	-	\$407,682	\$137,500	\$62,760	29,910	203,770	3,696	2.3
<b>Total</b>	<b>3</b>	<b>-</b>	<b>\$583,089</b>	<b>\$139,270</b>	<b>\$192,740</b>	<b>33,312</b>	<b>274,714</b>	<b>6,156</b>	

**Performance Measures**

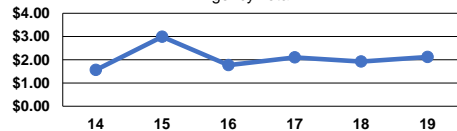
**Service Efficiency**

Mode	Operating Expenses per Vehicle Revenue Mile	Operating Expenses per Vehicle Revenue Hour
Demand Response	\$2.47	\$71.30
Bus	\$2.00	\$110.30
<b>Total</b>	<b>\$2.12</b>	<b>\$94.72</b>

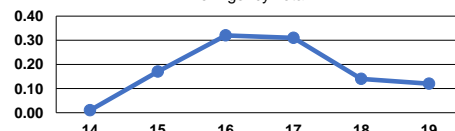
**Service Effectiveness**

Mode	Operating Expenses per Unlinked Passenger Trip	Unlinked Trips per Vehicle Revenue Mile	Unlinked Trips per Vehicle Revenue Hour
Demand Response	\$51.56	0.0	1.4
Bus	\$13.63	0.1	8.1
<b>Total</b>	<b>\$17.50</b>	<b>0.1</b>	<b>5.4</b>

Operating Expense per Vehicle Revenue Mile: Agency Total



Unlinked Passenger Trips per Vehicle Revenue Mile: Agency Total



**Notes:**

<sup>a</sup>Demand Response - Taxi (DT) and non-dedicated fleets do not report fleet age data.