

City of Danville dba Danville Mass Transit

2019 Annual Agency Profile

Mayor, City of Danville: Mr. Rickey Williams Jr
(217) 431-2216

General Information

Urbanized Area (UZA) Statistics - 2010 Census

Danville, IL-IN

30 **Square Miles**

50,996 **Population**

492 **Pop. Rank out of 498 UZAs**

Other UZAs Served

224 Champaign, IL, 0 Illinois Non-UZA

Service Area Statistics

34 **Square Miles**

88,517 **Population**

Service Consumption

606,155 **Annual Unlinked Trips (UPT)**

Service Supplied

613,667 **Annual Vehicle Revenue Miles (VRM)**

28,659 **Annual Vehicle Revenue Hours (VRH)**

Database Information

NTDID: 50174

Reporter Type: Reduced Reporter

Financial Information

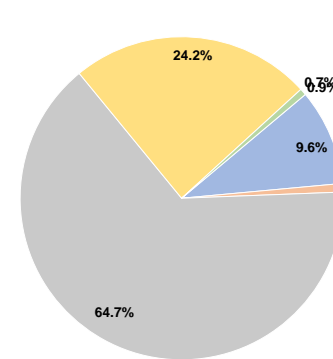
Sources of Operating Funds Expended

Fare Revenues	\$316,054	9.6%
Local Funds	\$27,880	0.9%
State Funds	\$2,118,967	64.7%
Federal Assistance	\$791,362	24.2%
Other Funds	\$21,791	0.7%
Total Operating Funds Expended	\$3,276,054	100.0%

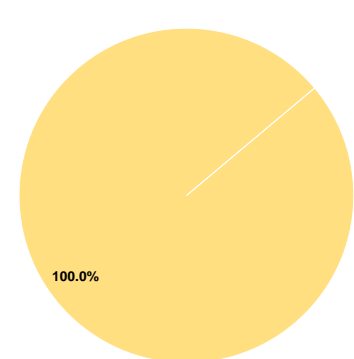
Sources of Capital Funds Expended

Fare Revenues	\$0	0.0%
Local Funds	\$0	0.0%
State Funds	\$0	0.0%
Federal Assistance	\$846,284	100.0%
Other Funds	\$0	0.0%
Total Capital Funds Expended	\$846,284	100.0%

Operating Funding Sources



Capital Funding Sources



Modal Characteristics

Operation Characteristics

Vehicles Operated at Maximum Service

Mode	Directly Operated	Purchased Transportation	Operating Expenses	Fare Revenues	Uses of Capital Funds	Annual Unlinked Trips	Annual Vehicle Revenue Miles	Annual Vehicle Revenue Hours	Average Fleet Age in Years ^a
Demand Response	-	2	\$113,268	\$15,124	\$0	7,607	30,843	2,448	0.0
Bus	11	-	\$3,159,232	\$300,930	\$846,284	598,548	582,824	26,211	6.5
Total	11	2	\$3,272,500	\$316,054	\$846,284	606,155	613,667	28,659	

Performance Measures

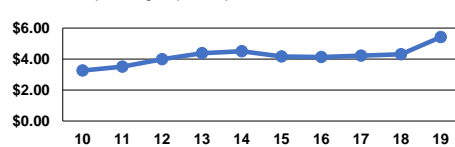
Service Efficiency

Mode	Operating Expenses per Vehicle Revenue Mile	Operating Expenses per Vehicle Revenue Hour
Demand Response	\$3.67	\$46.27
Bus	\$5.42	\$120.53
Total	\$5.33	\$114.19

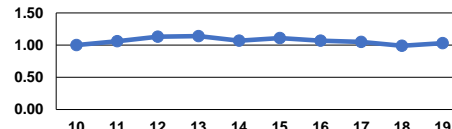
Service Effectiveness

Mode	Operating Expenses per Unlinked Passenger Trip	Unlinked Trips per Vehicle Revenue Mile	Unlinked Trips per Vehicle Revenue Hour
Demand Response	\$14.89	0.2	3.1
Bus	\$5.28	1.0	22.8
Total	\$5.40	1.0	21.2

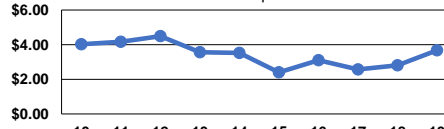
Operating Expense per Vehicle Revenue Mile: Bus



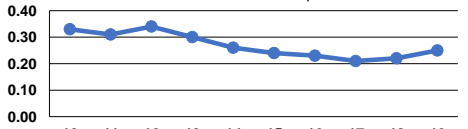
Unlinked Passenger Trips per Vehicle Revenue Mile: Bus



Operating Expense per Vehicle Revenue Mile: Demand Response



Unlinked Passenger Trips per Vehicle Revenue Mile: Demand Response



Notes:

^aDemand Response - Taxi (DT) and non-dedicated fleets do not report fleet age data.