

# City of Milton-Freewater

## 2019 Annual Agency Profile

### General Information

#### Urbanized Area (UZA) Statistics - 2010 Census

Walla Walla, WA-OR  
28 **Square Miles**  
55,805 **Population**  
464 **Pop. Rank out of 498 UZAs**

#### Other UZAs Served

0 Oregon Non-UZA

#### Service Area Statistics

79 **Square Miles**  
8,600 **Population**

#### Service Consumption

9,514 **Annual Unlinked Trips (UPT)**

#### Service Supplied

26,435 **Annual Vehicle Revenue Miles (VRM)**  
1,958 **Annual Vehicle Revenue Hours (VRH)**

#### Database Information

NTDID: 00063

Reporter Type: Reduced Reporter

### Financial Information

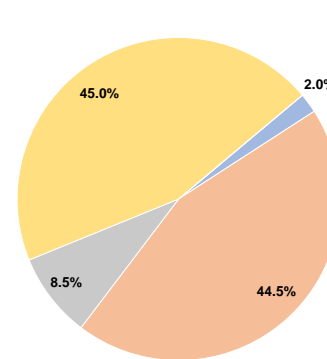
#### Sources of Operating Funds Expended

Fare Revenues	\$6,080	2.0%
Local Funds	\$137,149	44.5%
State Funds	\$26,250	8.5%
Federal Assistance	\$138,932	45.0%
Other Funds	\$0	0.0%
<b>Total Operating Funds Expended</b>	<b>\$308,411</b>	<b>100.0%</b>

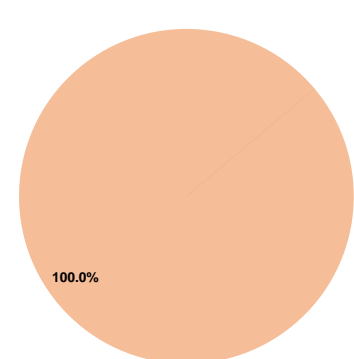
#### Sources of Capital Funds Expended

Fare Revenues	\$0	0.0%
Local Funds	\$3,858	100.0%
State Funds	\$0	0.0%
Federal Assistance	\$0	0.0%
Other Funds	\$0	0.0%
<b>Total Capital Funds Expended</b>	<b>\$3,858</b>	<b>100.0%</b>

#### Operating Funding Sources



#### Capital Funding Sources



### Modal Characteristics

#### Operation Characteristics

##### Vehicles Operated at Maximum Service

Mode	Directly Operated	Purchased Transportation	Operating Expenses	Fare Revenues	Uses of Capital Funds	Annual Unlinked Trips	Annual Vehicle Revenue Miles	Annual Vehicle Revenue Hours	Average Fleet Age in Years <sup>a</sup>
Demand Response - Taxi	-	1	\$110,146	\$6,080	\$3,858	4,350	5,726	452	0.0
Bus	-	1	\$162,265	\$0	\$0	5,164	20,709	1,506	7.7
<b>Total</b>	<b>-</b>	<b>2</b>	<b>\$272,411</b>	<b>\$6,080</b>	<b>\$3,858</b>	<b>9,514</b>	<b>26,435</b>	<b>1,958</b>	

#### Performance Measures

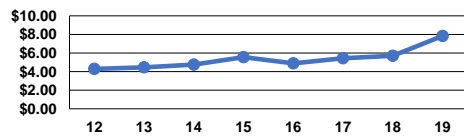
##### Service Efficiency

Mode	Operating Expenses per Vehicle Revenue Mile	Operating Expenses per Vehicle Revenue Hour
Demand Response - Taxi	\$19.24	\$243.69
Bus	\$7.84	\$107.75
<b>Total</b>	<b>\$10.30</b>	<b>\$139.13</b>

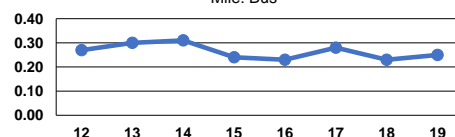
##### Service Effectiveness

Mode	Operating Expenses per Unlinked Passenger Trip	Unlinked Trips per Vehicle Revenue Mile	Unlinked Trips per Vehicle Revenue Hour
Demand Response - Taxi	\$25.32	0.8	9.6
Bus	\$31.42	0.2	3.4
<b>Total</b>	<b>\$28.63</b>	<b>0.4</b>	<b>4.9</b>

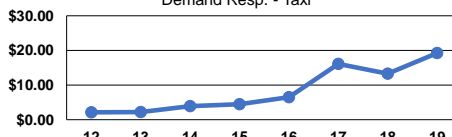
Operating Expense per Vehicle Revenue Mile: Bus



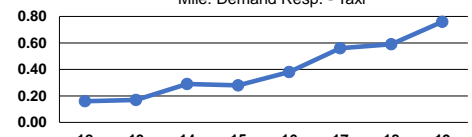
Unlinked Passenger Trips per Vehicle Revenue Mile: Bus



Operating Expense per Vehicle Revenue Mile: Demand Resp. - Taxi



Unlinked Passenger Trips per Vehicle Revenue Mile: Demand Resp. - Taxi



#### Notes:

<sup>a</sup>Demand Response - Taxi (DT) and non-dedicated fleets do not report fleet age data.