

# Bis-Man Transit Board

2018 Annual Agency Profile

## General Information

### Urbanized Area (UZA) Statistics - 2010 Census

Bismarck, ND  
39 **Square Miles**  
81,955 **Population**  
349 **Pop. Rank out of 498 UZAs**

### Other UZAs Served

0 North Dakota Non-UZA

### Service Area Statistics

56 **Square Miles**  
99,142 **Population**

### Service Consumption

228,692 **Annual Unlinked Trips (UPT)**

### Service Supplied

911,139 **Annual Vehicle Revenue Miles (VRM)**  
61,387 **Annual Vehicle Revenue Hours (VRH)**

### Database Information

NTDID: 80019

Reporter Type: Reduced Reporter

## Financial Information

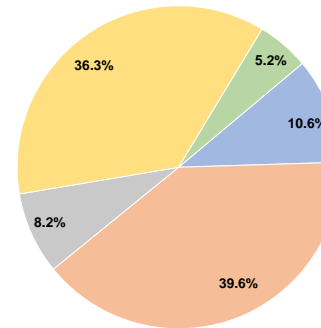
### Sources of Operating Funds Expended

|                                       |                    |               |
|---------------------------------------|--------------------|---------------|
| Fare Revenues                         | \$410,099          | 10.6%         |
| Local Funds                           | \$1,530,996        | 39.6%         |
| State Funds                           | \$317,377          | 8.2%          |
| Federal Assistance                    | \$1,402,287        | 36.3%         |
| Other Funds                           | \$202,315          | 5.2%          |
| <b>Total Operating Funds Expended</b> | <b>\$3,863,074</b> | <b>100.0%</b> |

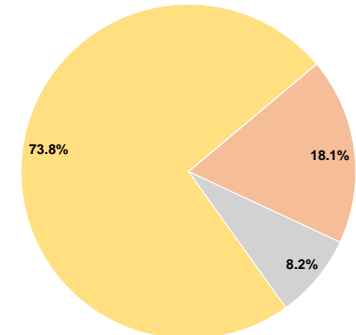
### Sources of Capital Funds Expended

|                                     |                  |               |
|-------------------------------------|------------------|---------------|
| Fare Revenues                       | \$0              | 0.0%          |
| Local Funds                         | \$130,988        | 18.1%         |
| State Funds                         | \$59,348         | 8.2%          |
| Federal Assistance                  | \$535,349        | 73.8%         |
| Other Funds                         | \$0              | 0.0%          |
| <b>Total Capital Funds Expended</b> | <b>\$725,685</b> | <b>100.0%</b> |

### Operating Funding Sources



### Capital Funding Sources



## Modal Characteristics

### Operation Characteristics

#### Vehicles Operated at Maximum Service

| Mode            | Directly Operated | Purchased Transportation | Operating Expenses | Fare Revenues    | Uses of Capital Funds | Annual Unlinked Trips | Annual Vehicle Revenue Miles | Annual Vehicle Revenue Hours | Average Fleet Age in Years <sup>a</sup> |
|-----------------|-------------------|--------------------------|--------------------|------------------|-----------------------|-----------------------|------------------------------|------------------------------|---|
| Demand Response | -                 | 18                       | \$2,288,926        | \$331,958        | \$559,260             | 121,520               | 552,669                      | 40,047                       | 4.0                                     |
| Bus             | -                 | 6                        | \$1,574,148        | \$78,141         | \$166,425             | 107,172               | 358,470                      | 21,340                       | 9.1                                     |
| <b>Total</b>    | <b>-</b>          | <b>24</b>                | <b>\$3,863,074</b> | <b>\$410,099</b> | <b>\$725,685</b>      | <b>228,692</b>        | <b>911,139</b>               | <b>61,387</b>                |   |

### Performance Measures

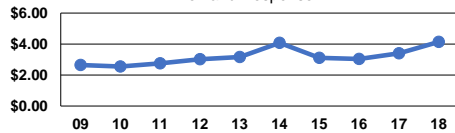
#### Service Efficiency

| Mode            | Operating Expenses per Vehicle Revenue Mile | Operating Expenses per Vehicle Revenue Hour |
|-----------------|---|---|
| Demand Response | \$4.14                                      | \$57.16                                     |
| Bus             | \$4.39                                      | \$73.77                                     |
| <b>Total</b>    | <b>\$4.24</b>                               | <b>\$62.93</b>                              |

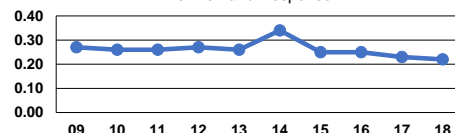
#### Service Effectiveness

| Mode            | Operating Expenses per Unlinked Passenger Trip | Unlinked Trips per Vehicle Revenue Mile | Unlinked Trips per Vehicle Revenue Hour |
|-----------------|--|---|---|
| Demand Response | \$18.84  | 0.2                                     | 3.0                                     |
| Bus             | \$14.69  | 0.3                                     | 5.0                                     |
| <b>Total</b>    | <b>\$16.89</b>                                 | <b>0.3</b>                              | <b>3.7</b>                              |

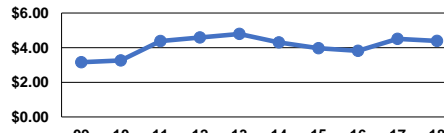
Operating Expense per Vehicle Revenue Mile: Demand Response



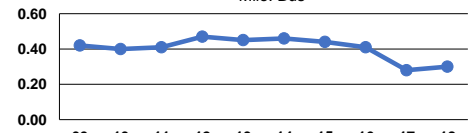
Unlinked Passenger Trips per Vehicle Revenue Mile: Demand Response



Operating Expense per Vehicle Revenue Mile: Bus



Unlinked Passenger Trips per Vehicle Revenue Mile: Bus



**Notes:**

<sup>a</sup>Demand Response - Taxi (DT) and non-dedicated fleets do not report fleet age data.