

Crow Tribe of Indians

2017 Annual Agency Profile

P.O. Box 159
Crow Agency, MT 59022

General Information

Federally Recognized Tribal Statistical Areas

Crow Reservation and Off-Reservation Trust Land, MT

Service Consumption

29,715 Annual Unlinked Trips (UPT)

Service Supplied

328,947 Annual Vehicle Revenue Miles (VRM)

9,938 Annual Vehicle Revenue Hours (VRH)

Database Information

NTDID: 88188

Reporter Type: Tribal Reporter

Financial Information

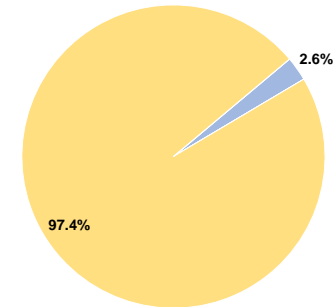
Sources of Operating Funds Expended

Fare Revenues	\$17,779	2.6%
Local Funds	\$0	0.0%
State Funds	\$0	0.0%
Federal Assistance	\$668,360	97.4%
Other Funds	\$0	0.0%
Total Operating Funds Expended	\$686,139	100.0%

Sources of Capital Funds Expended

Fare Revenues	\$0
Local Funds	\$0
State Funds	\$0
Federal Assistance	\$0
Other Funds	\$0
Total Capital Funds Expended	\$0

Operating Funding Sources



Modal Characteristics

Operation Characteristics

Vehicles Operated at Maximum Service

Mode	Directly Operated	Purchased Transportation	Operating Expenses	Fare Revenues	Uses of Capital Funds	Annual Unlinked Trips	Annual Vehicle Revenue Miles	Annual Vehicle Revenue Hours	Average Fleet Age in Years ^a
Demand Response	2	-	\$48,653	\$321	\$0	445	23,325	781	6.5
Bus	4	-	\$637,486	\$17,458	\$0	29,270	305,622	9,157	7.3
Total	6	-	\$686,139	\$17,779	\$0	29,715	328,947	9,938	

Performance Measures

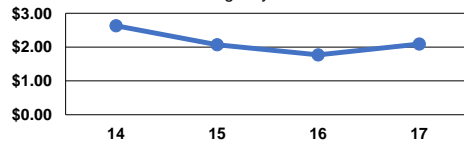
Service Efficiency

Mode	Operating Expenses per Vehicle Revenue Mile	Operating Expenses per Vehicle Revenue Hour
Demand Response	\$2.09	\$62.30
Bus	\$2.09	\$69.62
Total	\$2.09	\$69.04

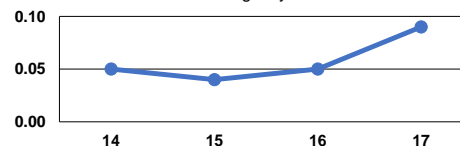
Service Effectiveness

Mode	Operating Expenses per Unlinked Passenger Trip	Unlinked Trips per Vehicle Revenue Mile	Unlinked Trips per Vehicle Revenue Hour
Demand Response	\$109.33	0.0	0.6
Bus	\$21.78	0.1	3.2
Total	\$23.09	0.1	3.0

Operating Expense per Vehicle Revenue Mile: Agency Total



Unlinked Passenger Trips per Vehicle Revenue Mile: Agency Total



Notes:

^aDemand Response - Taxi (DT) and non-dedicated fleets do not report fleet age data.