

Town of Lexington

2015 Annual Agency Profile

General Information

Urbanized Area (UZA) Statistics - 2010 Census

10 Boston, MA-NH-RI
1,873 **Square Miles**
4,181,019 **Population**
10 **Pop. Rank out of 498 UZAs**

Service Area Statistics

25 **Square Miles**
51,875 **Population**

Service Consumption

81,050 **Annual Unlinked Trips (UPT)**

Service Supplied

147,168 **Annual Vehicle Revenue Miles (VRM)**
8,774 **Annual Vehicle Revenue Hours (VRH)**

Database Information

NTDID: 10181

Reporter Type: Reduced Reporter

Financial Information

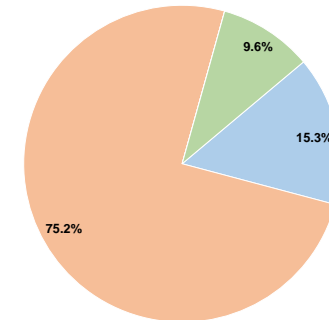
Sources of Operating Funds Expended

Fare Revenues	\$79,769	15.3%
Local Funds	\$393,126	75.2%
State Funds	\$0	0.0%
Federal Assistance	\$0	0.0%
Other Funds	\$50,000	9.6%
Total Operating Funds Expended	\$522,895	100.0%

Sources of Capital Funds Expended

Fare Revenues	\$0
Local Funds	\$0
State Funds	\$0
Federal Assistance	\$0
Other Funds	\$0
Total Capital Funds Expended	\$0

Operating Funding Sources



Modal Characteristics

Operation Characteristics

Vehicles Operated at Maximum Service

Mode	Directly Operated	Purchased Transportation	Operating Expenses	Fare Revenues	Uses of Capital Funds	Annual Unlinked Trips	Annual Vehicle Revenue Miles	Annual Vehicle Revenue Hours	Average Fleet Age in Years ¹
Bus	-	3	\$522,895	\$79,769	\$0	81,050	147,168	8,774	3.0
Total	-	3	\$522,895	\$79,769	\$0	81,050	147,168	8,774	

Performance Measures

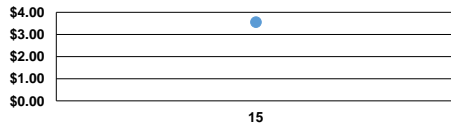
Service Efficiency

Mode	Operating Expenses per Vehicle Revenue Mile	Operating Expenses per Vehicle Revenue Hour
Bus	\$3.55	\$59.60
Total	\$3.55	\$59.60

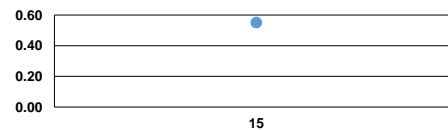
Service Effectiveness

Mode	Operating Expenses per Unlinked Passenger Trip	Unlinked Trips per Vehicle Revenue Mile	Unlinked Trips per Vehicle Revenue Hour
Bus	\$6.45	0.6	9.2
Total	\$6.45	0.6	9.2

Operating Expense per Vehicle Revenue Mile: Bus



Unlinked Passenger Trips per Vehicle Revenue Mile: Bus



Notes:

¹Demand Response - Taxi (DT) and non-dedicated fleets do not report fleet age data.