

## General Information

### Federally Recognized Tribal Statistical Areas

148 Lummi Reservation, WA

### Service Consumption

55,446 Annual Unlinked Trips (UPT)

### Service Supplied

102,705 Annual Vehicle Revenue Miles (VRM)

7,005 Annual Vehicle Revenue Hours (VRH)

### Database Information

NTDID: 00095

Reporter Type: Tribal Reporter

## Financial Information

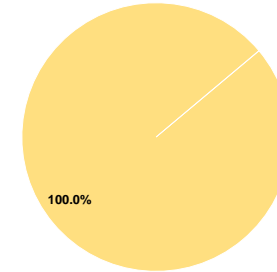
### Sources of Operating Funds Expended

|                                       |                  |               |
|---------------------------------------|------------------|---------------|
| Fare Revenues                         | \$0              | 0.0%          |
| Local Funds                           | \$0              | 0.0%          |
| State Funds                           | \$0              | 0.0%          |
| Federal Assistance                    | \$455,521        | 100.0%        |
| Other Funds                           | \$0              | 0.0%          |
| <b>Total Operating Funds Expended</b> | <b>\$455,521</b> | <b>100.0%</b> |

### Sources of Capital Funds Expended

|                                     |            |
|-------------------------------------|------------|
| Fare Revenues                       | \$0        |
| Local Funds                         | \$0        |
| State Funds                         | \$0        |
| Federal Assistance                  | \$0        |
| Other Funds                         | \$0        |
| <b>Total Capital Funds Expended</b> | <b>\$0</b> |

### Operating Funding Sources



## Modal Characteristics

### Operation Characteristics

#### Vehicles Operated at Maximum Service

| Mode         | Directly Operated | Purchased Transportation | Operating Expenses | Fare Revenues | Uses of Capital Funds | Annual Unlinked Trips | Annual Vehicle Revenue Miles | Annual Vehicle Revenue Hours | Average Fleet Age in Years <sup>1</sup> |
|--------------|-------------------|--------------------------|--------------------|---------------|-----------------------|-----------------------|------------------------------|------------------------------|---|
| Bus          | 2                 | -                        | \$455,521          | \$0           | \$0                   | 55,446                | 102,705                      | 7,005                        | 4.2                                     |
| <b>Total</b> | <b>2</b>          | <b>-</b>                 | <b>\$455,521</b>   | <b>\$0</b>    | <b>\$0</b>            | <b>55,446</b>         | <b>102,705</b>               | <b>7,005</b>                 |   |

### Performance Measures

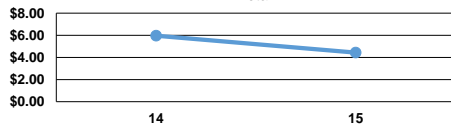
#### Service Efficiency

| Mode         | Operating Expenses per Vehicle Revenue Mile | Operating Expenses per Vehicle Revenue Hour |
|--------------|---|---|
| Bus          | \$4.44                                      | \$65.03                                     |
| <b>Total</b> | <b>\$4.44</b>                               | <b>\$65.03</b>                              |

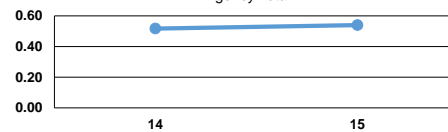
#### Service Effectiveness

| Mode         | Operating Expenses per Unlinked Passenger Trip | Unlinked Trips per Vehicle Revenue Mile | Unlinked Trips per Vehicle Revenue Hour |
|--------------|--|---|---|
| Bus          | \$8.22   | 0.5                                     | 7.9                                     |
| <b>Total</b> | <b>\$8.22</b>                                  | <b>0.5</b>                              | <b>7.9</b>                              |

Operating Expense per Vehicle Revenue Mile: Agency Total



Unlinked Passenger Trips per Vehicle Revenue Mile: Agency Total



#### Notes:

<sup>1</sup>Demand Response - Taxi (DT) and non-dedicated fleets do not report fleet age data.