

## General Information

### Urbanized Area (UZA) Statistics - 2010 Census

Bismarck, ND  
39 Square Miles  
81,955 Population  
349 Pop. Rank out of 498 UZAs

### Other UZAs Served

0 North Dakota Non-UZA

### Service Area Statistics

137 Square Miles  
94,719 Population

### Service Consumption

303,328 Annual Unlinked Trips (UPT)

### Service Supplied

792,012 Annual Vehicle Revenue Miles (VRM)  
56,474 Annual Vehicle Revenue Hours (VRH)

### Database Information

NTDID: 80019

Reporter Type: Small Systems Reporter

## Financial Information

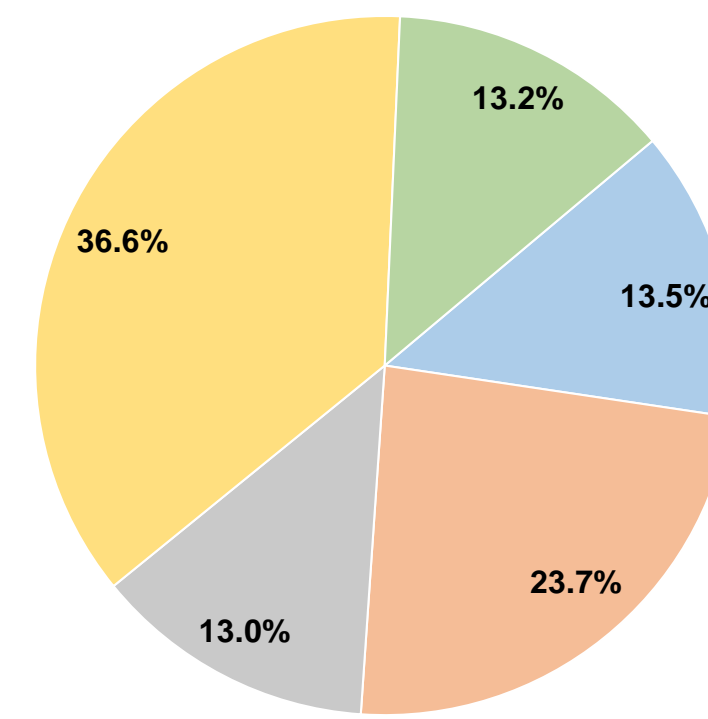
### Sources of Operating Funds Expended

Fare Revenues	\$441,344	13.5%
Local Funds	\$778,121	23.7%
State Funds	\$427,513	13.0%
Federal Assistance	\$1,198,516	36.6%
Other Funds	\$432,351	13.2%
<b>Total Operating Funds Expended</b>	<b>\$3,277,845</b>	<b>100.0%</b>

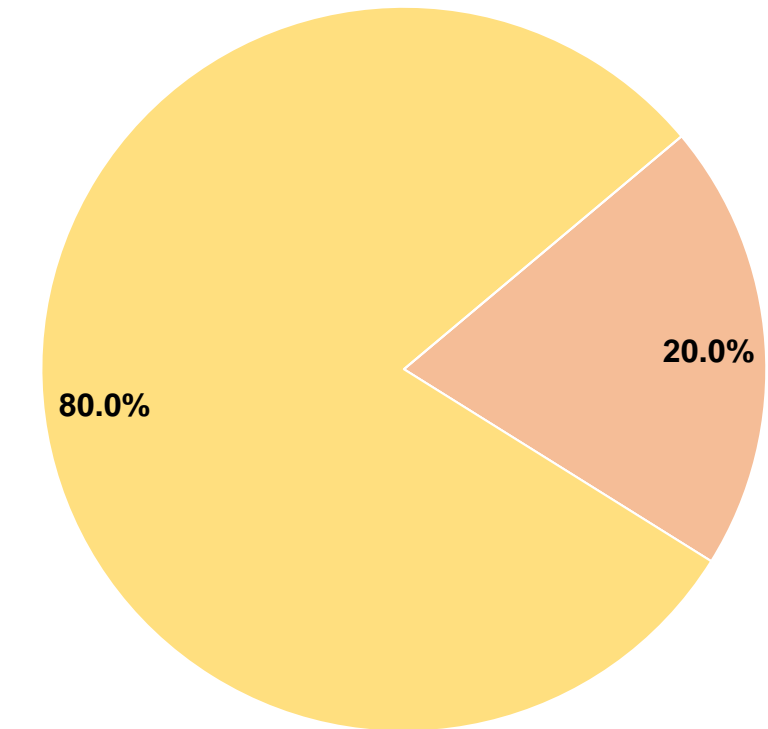
### Sources of Capital Funds Expended

Fare Revenues	\$0	0.0%
Local Funds	\$199,504	20.0%
State Funds	\$0	0.0%
Federal Assistance	\$798,018	80.0%
Other Funds	\$0	0.0%
<b>Total Capital Funds Expended</b>	<b>\$997,522</b>	<b>100.0%</b>

### Operating Funding Sources



### Capital Funding Sources



## Modal Characteristics

### Operation Characteristics

#### Vehicles Operated at Maximum Service

Mode	Directly Operated	Purchased Transportation	Operating Expenses	Fare Revenues	Uses of Capital Funds	Annual Unlinked Trips	Annual Vehicle Revenue Miles	Annual Vehicle Revenue Hours	Average Fleet Age in Years <sup>1</sup>
Demand Response	-	17	\$1,499,950	\$201,960	\$456,469	124,722	367,274	27,553	6.0
Demand Response - Taxi	-	4	\$470,512	\$176,032	\$143,187	39,996	120,538	9,043	
Bus	-	7	\$1,307,383	\$63,352	\$397,866	138,610	304,200	19,878	7.2
<b>Total</b>	<b>-</b>	<b>28</b>	<b>\$3,277,845</b>	<b>\$441,344</b>	<b>\$997,522</b>	<b>303,328</b>	<b>792,012</b>	<b>56,474</b>	

### Performance Measures

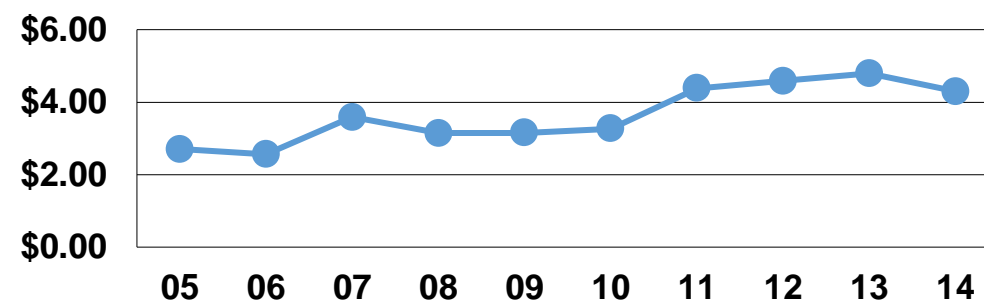
#### Service Efficiency

Mode	Operating Expenses per Vehicle Revenue Mile	Operating Expenses per Vehicle Revenue Hour
Demand Response	\$4.08	\$54.44
Demand Response - Taxi	\$3.90	\$52.03
Bus	\$4.30	\$65.77
<b>Total</b>	<b>\$4.14</b>	<b>\$58.04</b>

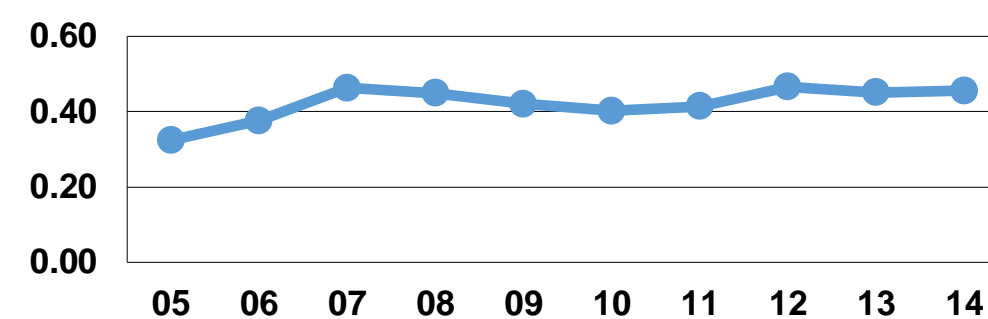
#### Service Effectiveness

Mode	Operating Expenses per Unlinked Passenger Trip	Unlinked Trips per Vehicle Revenue Mile	Unlinked Trips per Vehicle Revenue Hour
Demand Response	\$12.03	0.3	4.5
Demand Response - Taxi	\$11.76	0.3	4.4
Bus	\$9.43	0.5	7.0
<b>Total</b>	<b>\$10.81</b>	<b>0.4</b>	<b>5.4</b>

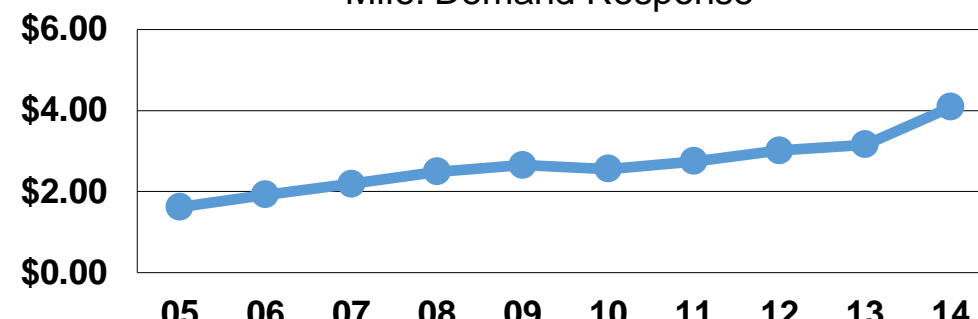
Operating Expense per Vehicle Revenue Mile: Bus



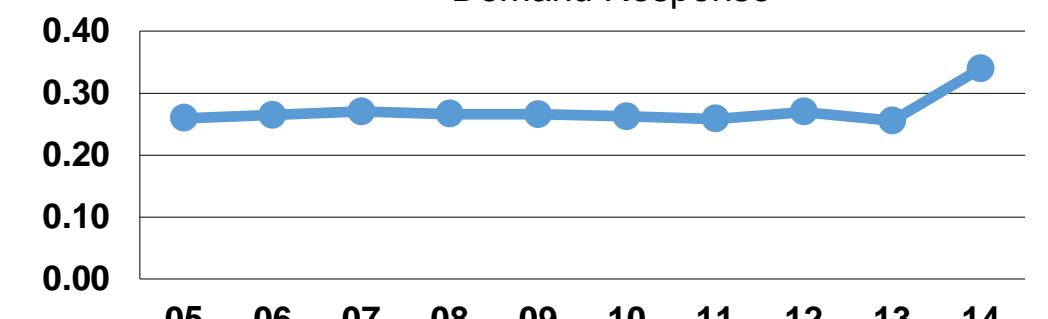
Unlinked Passenger Trips per Vehicle Revenue Mile: Bus



Unlinked Passenger Trips per Vehicle Revenue Mile: Demand Response



Operating Expense per Vehicle Revenue Mile: Demand Response



**Notes:**

<sup>1</sup>Demand Response - Taxi (DT) and non-dedicated fleets do not report fleet age data.