



# California Public Utilities Commission SSOA Inspections



Daren Gilbert, Manager  
Rail Transit Safety Branch  
Safety and Enforcement Division  
May 17, 2018



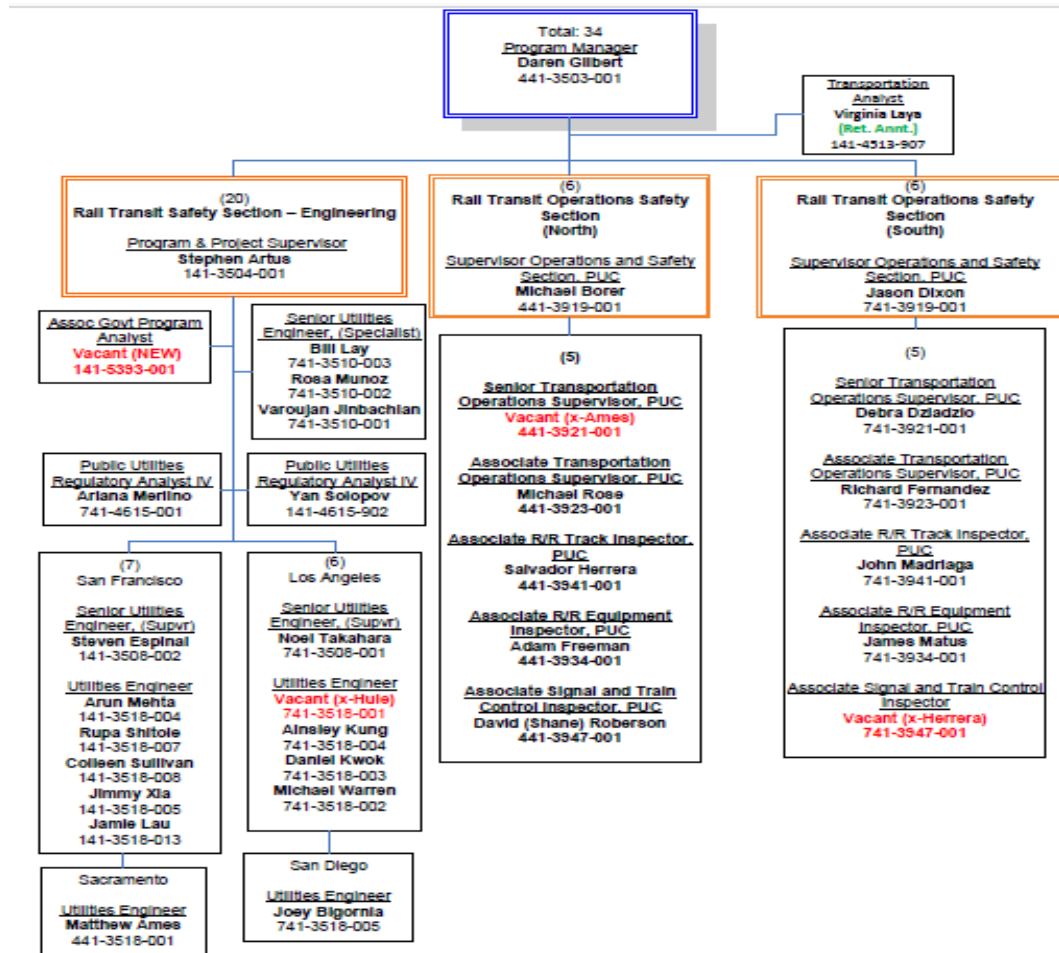


# Rail Transit Safety Branch

- CPUC RTSB Branch Structure
- Agencies Under RTSB jurisdiction
- RTSB Inspection program



# Rail Transit Safety Branch





# Jurisdictional Agencies

- There are 7 large urban rail transit systems under CPUC safety jurisdiction.
  - BART
  - SCVTA
  - SRTD
  - LACMTA
  - San Diego Trolley
  - NCTD
  - SF MTA





# Jurisdictional Agencies

- There are 6 smaller fixed guideway systems under CPUC jurisdiction.
  - The Grove Trolley
  - Americana on Brand Trolley
  - Angel's Flight Funnicular
  - Getty Museum Tram
  - SFO AirTrain APM System
  - Sacramento Airport APM





# Rail Transit Safety Branch – Small Agencies



SF Airport “People Mover”



Angels Flight Railway  
Los Angeles



Getty Museum Train  
Los Angeles



Grove Farmers Market Trolley  
Los Angeles



Americana at Brand Trolley  
Glendale



Oakland Airport Connector



Sacramento Airport “People Mover”



SF Cable Cars







# Jurisdictional Agencies

## New Systems

- Four new systems in various states of planning or engineering
  - Los Angeles Streetcar
  - Sacramento Streetcar
  - OC Streetcar (Santa Ana/Garden Grove)
  - Los Angeles World Airports – LAX APM





# RTSB Inspection Program

- Began in 2009 with Budget request proposal to add inspection personnel;
- Based on FRA Model of field inspectors and continuous ongoing inspections;
- Several issues identified where approved process, procedures and SOPs were adequate, but field implementation was not.







# Rail Transit General Orders

- General Order 143-B – Design, Construction and Operation of Light Rail Systems
- General Order 164-E – Regulations on State Safety Oversight of Fixed Guideway Systems
- General Order 172 – Personal Electronic Device Prohibitions for Rail Transit Workers
- General Order 175-A – Roadway Worker Protections for Rail Transit Systems





# Other Applicable Standards

- FRA Track Safety Standards-49CFR213
- FRA Signal and Train Control-49CFR234, 235, 236
- FRA On Track Safety 49CFR 214
- AREMA
- NFPA Standards
- APTA Standards
- CalOSHA Standards
- CA Public Utilities Code





# Inspection Team

- Job Classifications – Experienced Railroad/Transit personnel
- 12 total – 6 NorCal, 6 SoCal
  - 2 Supervisors
  - 2 Senior Inspectors
  - 8 Inspectors (2 in each craft)
- Crafts – Same as FRA except no HazMat
  - Track
  - Signal & Train Control
  - Motive Power & Equipment
  - Operating Practices





# Inspector Activities

- Continuous and Ongoing Inspections
  - Announced
  - Unannounced
- Participation in Triennial Audits
  - Approximately a dozen additional checklists
- Accident Investigations
- Special Studies and Investigations
- Enforcement actions





## 2017 Inspection Statistics

2017 RTSB Inspections South			BY CRAFT			
RTA	<u>Inspection</u> <u>s</u>	<u>Open</u> <u>Items</u>	Mech	Op	Signal	Track
Angel's Flight	6	10	16	1	0	0
Americana	7	0	3	2	0	2
Grove	6	0	4	1	0	1
Getty	2	0	1	1	0	0
NCTD	22	6	9	4	8	1
LACMTA	71	27	44	1	19	7
SDTI	32	0	16	1	10	5
Total	146	43	93	11	37	16
2017 RTSB Inspections North			BY CRAFT			
RTA	<u>Inspection</u> <u>s</u>	<u>Open</u> <u>Items</u>	Mech	Op	Signal	Track
BART	26	0	12	1	11	2
SFMTA	34	11	10	12	10	2
SRTD	29	4	10	3	12	4
VTA	49	0	10	3	31	5
SAC (APM)	3	0	1	1	1	0
SFO (APM)	3	1	2	0	1	0
BART (OAC)	1	0	1	0	0	0
Total	145	16	46	20	66	13





## Benefits of the Inspection Program

- Assesses Implementation of approved plans and procedures – implementation is where the rubber hits the road.
- Compliments Engineering Staff KSAs with experienced rail field personnel.
- Eliminates disconnect between paper and practice.







# Practical Examples

Inspection team is involved in all aspects of the CPUC SSOA program activities.





# Questions??

**Thank you!**

