



Metra

Developing Targets for 2017
Presented by Tina Ignat
Asset Management Analyst | Engineering
FTA TAM ROUNDTABLE @Cambridge MA – August 2017

Presentation Outline

- Context of Metra
- Timeline to develop Targets
- Lessons Learned
- 2018 Targets



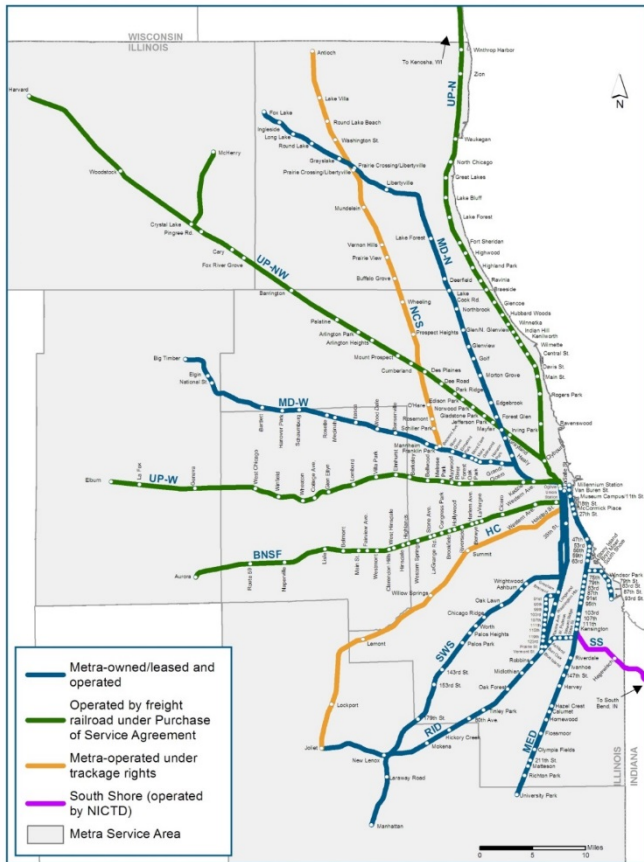
Developing Targets | Context

What is Metra?



- 3rd Largest Commuter Rail Line in the United States
- Made up of 11 lines; 4 owned by Metra, 4 have POS Agreements and 3 have trackage rights with the CN and the NS
- Hub is Chicago, Illinois and lines radiate out to suburbs
- Yearly budget of ~\$1B

Metra System Map & Snapshot Data



80.4 million passenger trips in 2016

709 weekday trains

308 Saturday trains

175 Sunday trains

241 train stations

1,155 miles of track

483 route miles

149 locomotives

845 diesel railcars

186 electric railcars

24 rail yards

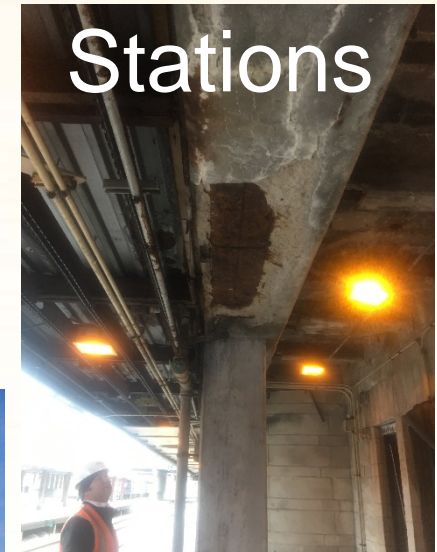
90,779 parking spaces

500+ grade crossings

12 fuel facilities

823 bridges

ASSET GROUPS/CLASSES



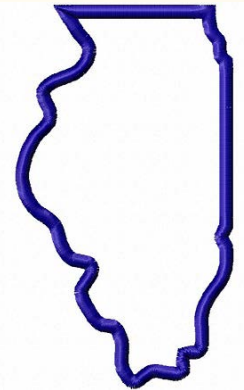
Governance



MPO



Oversight Agency to
Service Boards



Bus & Heavy Rail



Commuter Rail



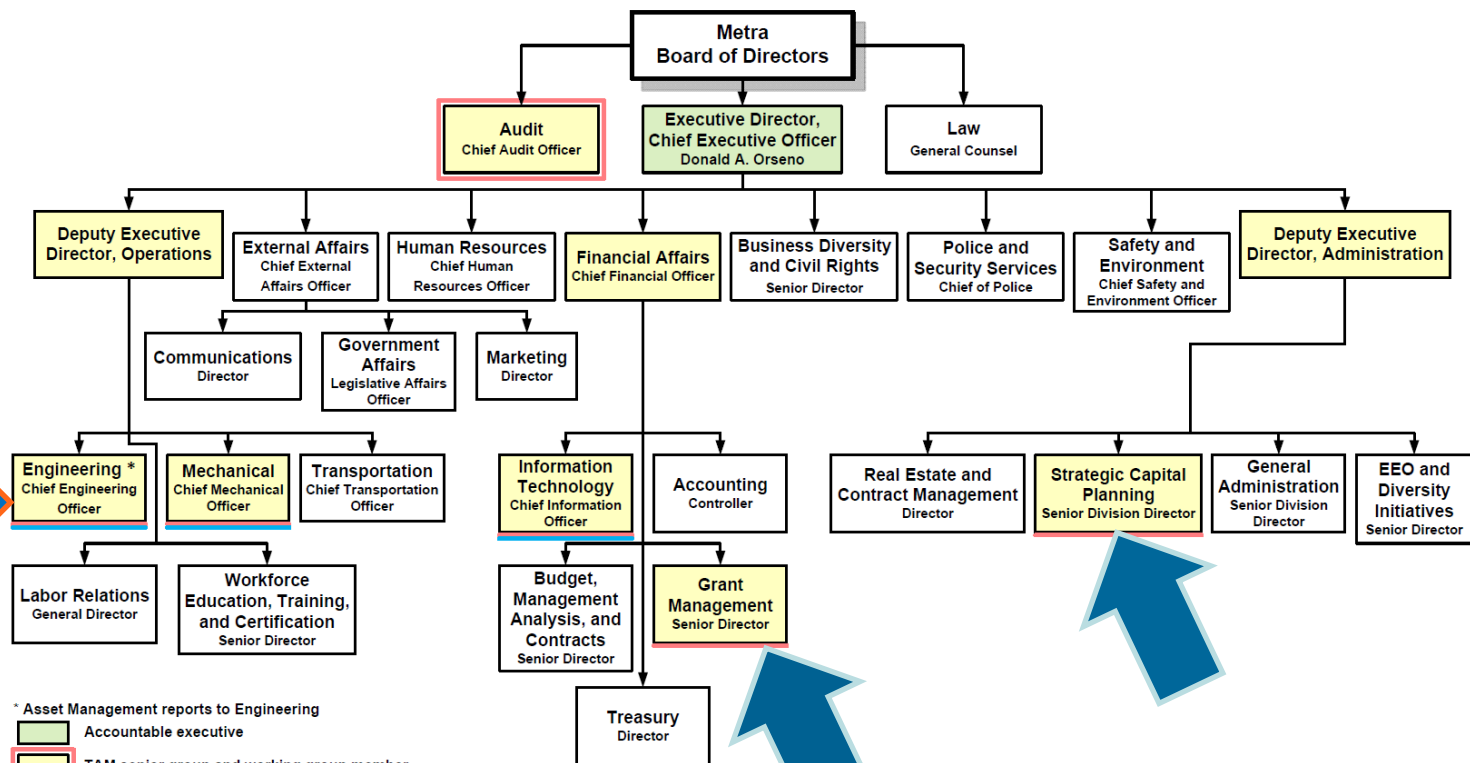
Suburban Bus &
Paratransit



2015 Org Chart



Organization Chart with TAM Responsibilities



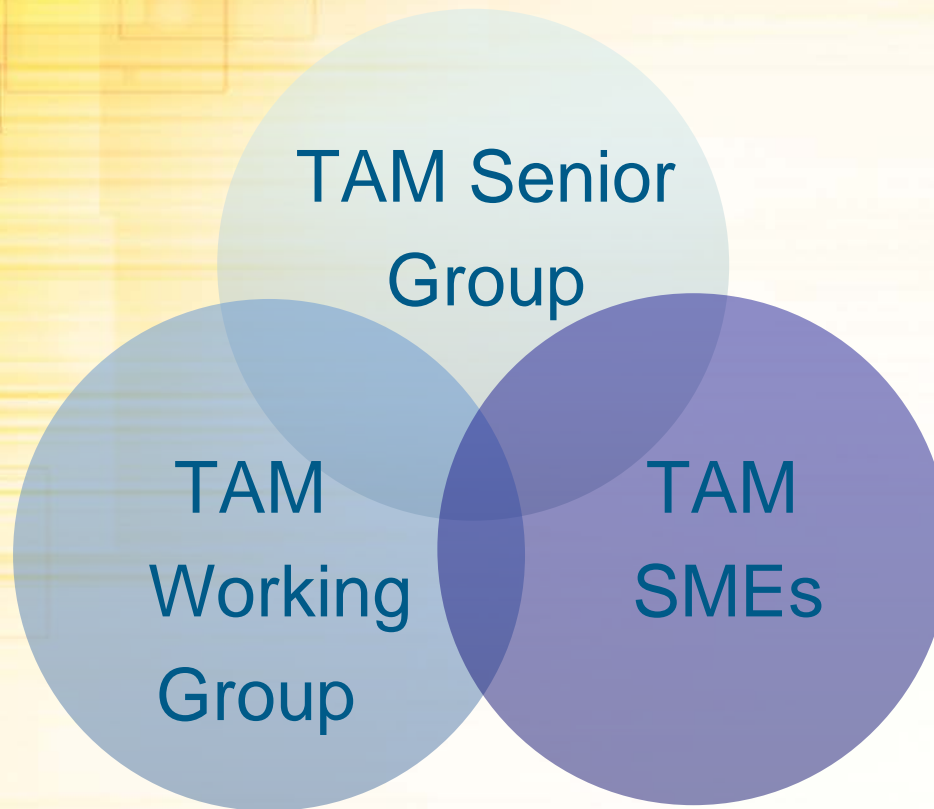
- * Asset Management reports to Engineering
- Accountable executive
- TAM senior group and working group member
- TAM senior group members
- Department with TAM senior group and working group members
- Department with subject matter experts (SMEs)

Developing Targets | Timeline

Timeline to 2017 Targets



Step 1: Formed TAM Committees



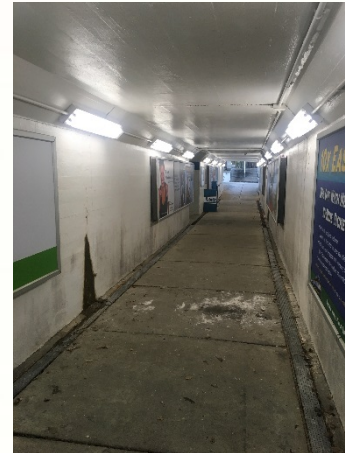
Step 2: Final Rule

Analyzing Assets

Category	Assessing Condition	Performance Targets	Measure
Equipment	▪ Age based	▪ Only <u>non-revenue service vehicles</u>	%
Rolling Stock	▪ Age based	▪ Only revenue vehicles by <u>vehicle class/mode</u>	%
Infrastructure	▪ Only infrastructure with direct capital responsibility	▪ Only <u>fixed rail guideway</u>	%
Facilities	▪ Only facilities with direct capital responsibility (not bus shelters)	▪ <u>Maintenance and Administrative and Passenger Stations and Parking Facilities</u>	TERM

Steps 3-5: Kick Off Meeting, Data Update and Refinement

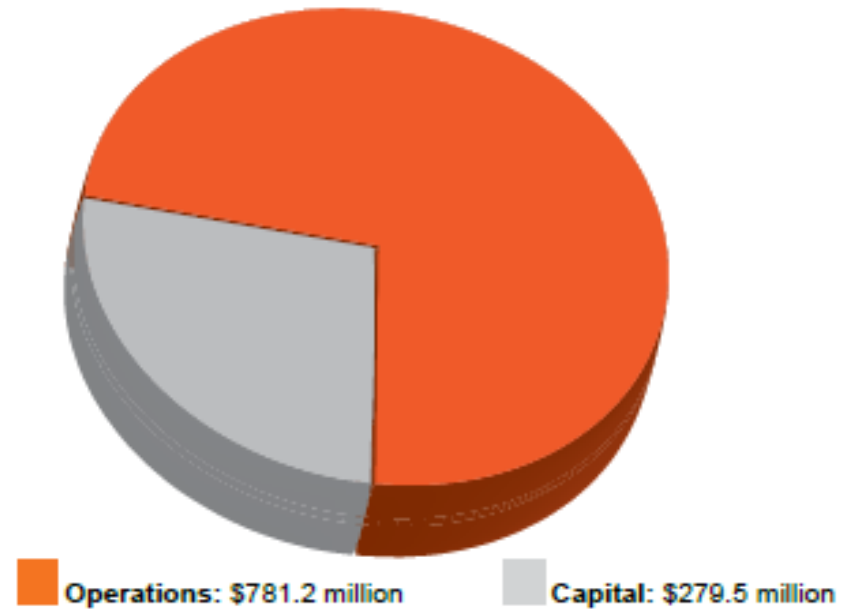
- Shared webinar information and preliminary measures
- Last comprehensive update in 2013
- We have been updating since, just not as dynamic as we would like
- Refined data and met with Committees



Step 6: Reviewed 2017 Program



**2017 FUNDING DISTRIBUTION
TOTAL \$1.06 BILLION**



Metra has always addressed SGR needs with funding that it receives – now we are using data more across all asset classes

Step 6 cont'd: Reviewed 2017 Funding Program

PE	Description	RR	Source	Amount
Rolling Stock				
5011	LOCOMOTIVE REHAB F59	MET	f	\$8,000,000
5101	TRACTION MOTORS	MET	f	1,700,000
4510	CAR REHAB (41 BUDD CARS)	MET	rb	10,000,000
5102	LOCOMOTIVE AND CAR IMPROVEMENTS	MET	f	2,000,000
5103	WHEEL R	Track and Structure		
5106	VEHICLE	5111	TIES, BALLAST and SW HEATERS	BNS f \$3,000,000
4507	LOCOMO'	5112	TIES AND BALLAST	MED f 2,500,000
5105	LOCOMO'	5113	TIES AND BALLAST	MWD f 1,000,000
5105	LOCOMO'	5115	TIES AND BALLAST	UPR f 1,500,000
5105	LOCOMO'	5117	RAIL GRINDING	MED f 200,000
5006	NEW GAL	5122	UNDERCUTTING and SURFACING	MED f 200,000
4909	CAR REH	5123	UNDERCUTTING and SURFACING (50/50)	MWD f 300,000
5007	CAR REH	5126	UNDERCUTTING and SURFACING	MWD f 200,000
5007	CAR REH	5124	UNDERCUTTING and SURFACING	RID f 500,000
5010	CAR AND	5125	UNDERCUTTING and SURFACING	UPR f 300,000
5010	CAR AND	5127	RAIL REPLACEMENT	BNS f 1,000,000
5010	CAR AND	5128	RAIL REPLACEMENT	MED f 500,000
Rolling Stock Sub-T		5129	RAIL REPLACEMENT (INTRACK WELDING 50/50)	MWD f 1,000,000
		5130	RAIL REPLACEMENT	MWD f 1,000,000
5131 f				
5132 f				
5120 f				
5133 ✓				
5134 ✓		PE	Description	RR Source Amount
5135 ✓		Signal, Electrical and Communications		
5136 ✓		4343	POSITIVE TRAIN CONTROL	MET f \$25,000,000
5143 ✓		4343	POSITIVE TRAIN CONTROL	MET rb 5,500,000
5137 ✓		5145	SIGNAL SYSTEM UPGRADES	MED f 500,000
5138 f		5146	SIGNAL SYSTEM UPGRADES	MWD f 500,000
5139 f		5147	SIGNAL SYSTEM UPGRADES	RID f 500,000
5140 f		5149	LAKE STREET INTERLOCKER	UPR f 1,500,000
5141 f		4254	TRACTION PWIR SYS AUGMENT	MED rb 10,000,000
5142 f		4942	16th STREET SIGNAL	RID f 10,000,000
2112 f		5151	FIBER OPTIC	MED f 6,000,000
5144 ✓		5152	FIBER OPTIC	MWD f 570,000
		5153	FIBER OPTIC	RID f 400,000
		5154	RADIO DISPATCHING SYSTEM	MET f 1,000,000
Track and S		4745	IMPEDANCE BONDS	MED f 300,000
		Signal, Electrical and Communications Sub-Total		
		\$61,770,000		

- Monthly Capital Projects Status Meetings
- Talked to User Departments about approach to projects
- We are on Jan-Dec Fiscal year, whereas Targets are on Oct-Sep
- We receive funding marks between 2nd and 3rd Quarter

Steps 7 & 8: Finalized Targets & Shared

Category	Class	Performance Measure	Target
Rolling Stock	Coaches	43% of Coaches have met or exceeded their ULB of 30 years.	Maintain current state of all Rolling Stock.
	Locomotives	62% of Locomotives have met or exceeded their ULB of 30 years.	
	Highliners	0% of Highliners have met or exceeded their ULB of 30 years.	

Steps 7 & 8: Finalized Targets & Shared

Category	Class	Performance Measure	Target
Facilities	Passenger Stations and Parking	13% of all Metra Stations are rated below 3 on TERM Scale of 1 to 5. (1=Poor, 5=New)	Maintain current state of all Facilities.
	Maintenance and Administrative	6% of all Maintenance & Administrative Buildings are rated below 3 on TERM Scale of 1 to 5.	

Steps 7 & 8: Finalized Targets & Shared

Category	Class	Performance Measure	Target
Infrastructure	Track	Less than 1% of our Direct Route Miles (DRM) are under performance restrictions.	Maintain current state of our Track Infrastructure.

Steps 7 & 8: Finalized Targets & Shared

Category	Class	Performance Measure	Target
Equipment	Non-Revenue Vehicles	32.2% have met or exceeded their ULB of 14 years.	Maintain current state of all Equipment.
	Work Equipment	36.3% have met or exceeded their ULB of 25 years.	

Developing Targets | Lessons Learned

Lessons Learned



- Talked to Peer Agencies during process and afterwards
- Need to work on narrative (i.e. Infrastructure Target)
- Committees worked well together
- When in doubt, ask the question

Developing Targets | 2018 Targets

2018 Targets



- Data clean-up ongoing
- Looking at 2017 progress
- 2018 Capital Program will inform targets



Questions?

METRA HOSTING TAM PEER EXCHANGE

OCT 4TH 2017

Transit Asset Management Peer Exchange

October 4, 2017 - 9:00 a.m. to 4:00 p.m.

@Metra HQ | 547 West Jackson Blvd | Chicago, IL 60661 | 2nd Floor Conference Hall

Purpose of Event: *To hear from respective Transit Asset Managers on implementation and benefits of asset management in the transit industry; and to build networks for peer-to-peer learning in the future as we all move forward to FTA TAM compliance and beyond. PLUS October 5th Tour of Locomotive/Coach Car Rehab Shop – 40 maximum.*

LIMITED SPACE! Open to FIRST 75 Respondents for conference

No Registration Fee | Refreshments and lunch provided

TO REGISTER and view speakers, click or copy and paste the Eventbrite link:

<https://www.eventbrite.com/e/transit-asset-management-peer-exchange-tickets-36840055598>

Continue the conversation at after-hours buffet dinner reception

@WSP Chicago Office 5:00 p.m. to 8:00 p.m.

30 North LaSalle Street - Suite 4200 | Chicago, IL 60602

Sponsored by:



Supported by:





Thank You

Tina Ignat, AIAM, METRA

Over 20 years railroad experience including Operations, Administration and Engineering; Currently the Project Manager for the Development of Metra's Transit Asset Management Plan.

Branch Lead, Chicago IAM

Email: tignat@metrarr.com

Like us on Facebook: [Metra](#)

Follow us on Twitter: [@Metra](#)

Visit us at www.metrarail.com

