

City of Folsom (FSL)

2014 Annual Agency Profile

Public Works Section Manager : Mr. Kent Gary

General Information

Urbanized Area (UZA) Statistics - 2010 Census

Sacramento, CA
471 Square Miles
1,723,634 Population
28 Pop. Rank out of 498 UZAs

Service Area Statistics

24 Square Miles
71,018 Population

Service Consumption

92,173 Annual Unlinked Trips (UPT)

Service Supplied

165,306 Annual Vehicle Revenue Miles (VRM)
11,041 Annual Vehicle Revenue Hours (VRH)

Database Information

NTDID: 90220

Reporter Type: Small Systems Reporter

Financial Information

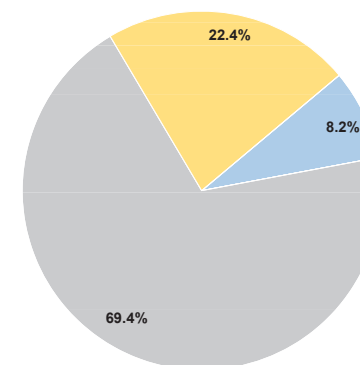
Sources of Operating Funds Expended

Fare Revenues	\$149,757	8.2%
Local Funds	\$0	0.0%
State Funds	\$1,274,816	69.4%
Federal Assistance	\$411,379	22.4%
Other Funds	\$0	0.0%
Total Operating Funds Expended	\$1,835,952	100.0%

Sources of Capital Funds Expended

Fare Revenues	\$0
Local Funds	\$0
State Funds	\$0
Federal Assistance	\$0
Other Funds	\$0
Total Capital Funds Expended	\$0

Operating Funding Sources



Modal Characteristics

Operation Characteristics

Vehicles Operated at Maximum Service

Mode	Directly Operated	Purchased Transportation	Operating Expenses	Fare Revenues	Uses of Capital Funds	Annual Unlinked Trips	Annual Vehicle Revenue Miles	Annual Vehicle Revenue Hours	Average Fleet Age in Years ¹
Demand Response	6	-	\$510,320	\$33,278	\$0	9,427	36,447	2,994	11.0
Bus	2	-	\$1,325,632	\$116,479	\$0	82,746	128,859	8,047	8.1
Total	8	-	\$1,835,952	\$149,757	\$0	92,173	165,306	11,041	

Performance Measures

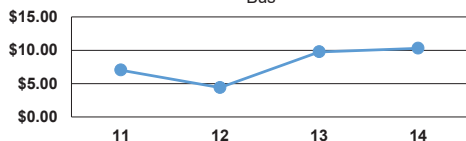
Service Efficiency

Mode	Operating Expenses per Vehicle Revenue Mile	Operating Expenses per Vehicle Revenue Hour
Demand Response	\$14.00	\$170.45
Bus	\$10.29	\$164.74
Total	\$11.11	\$166.28

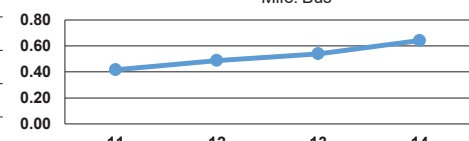
Service Effectiveness

Mode	Operating Expenses per Unlinked Passenger Trip	Unlinked Trips per Vehicle Revenue Mile	Unlinked Trips per Vehicle Revenue Hour
Demand Response	\$54.13	0.3	3.1
Bus	\$16.02	0.6	10.3
Total	\$19.92	0.6	8.3

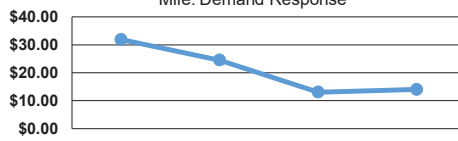
Operating Expense per Vehicle Revenue Mile: Bus



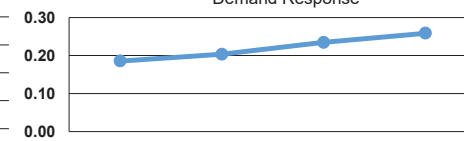
Unlinked Passenger Trips per Vehicle Revenue Mile: Bus



Operating Expense per Vehicle Revenue Mile: Demand Response



Unlinked Passenger Trips per Vehicle Revenue Mile: Demand Response



Notes:

¹Demand Response - Taxi (DT) and non-dedicated fleets do not report fleet age data.