

# Municipality of Carolina (GMAC)

2014 Annual Agency Profile

Mayor: Mr. Jose Aponte-Dalmau

787-757-2626

## General Information

### Urbanized Area (UZA) Statistics - 2010 Census

San Juan, PR

867 Square Miles

2,148,346 Population

21 Pop. Rank out of 498 UZAs

### Service Area Statistics

4 Square Miles

176,762 Population

### Service Consumption

818,854 Annual Unlinked Trips (UPT)

### Service Supplied

296,973 Annual Vehicle Revenue Miles (VRM)

49,262 Annual Vehicle Revenue Hours (VRH)

### Database Information

NTDID: 40125

Reporter Type: Small Systems Reporter

## Financial Information

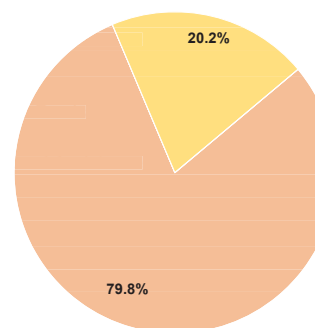
### Sources of Operating Funds Expended

Fare Revenues	\$0	0.0%
Local Funds	\$1,860,875	79.8%
State Funds	\$0	0.0%
Federal Assistance	\$472,312	20.2%
Other Funds	\$0	0.0%
<b>Total Operating Funds Expended</b>	<b>\$2,333,187</b>	<b>100.0%</b>

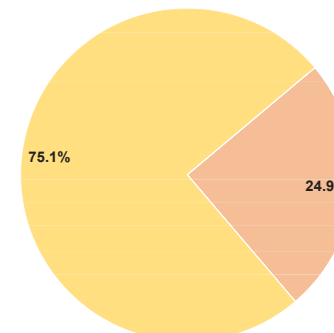
### Sources of Capital Funds Expended

Fare Revenues	\$0	0.0%
Local Funds	\$56,962	24.9%
State Funds	\$0	0.0%
Federal Assistance	\$171,988	75.1%
Other Funds	\$0	0.0%
<b>Total Capital Funds Expended</b>	<b>\$228,950</b>	<b>100.0%</b>

### Operating Funding Sources



### Capital Funding Sources



## Modal Characteristics

### Operation Characteristics

#### Vehicles Operated at Maximum Service

Mode	Directly Operated	Purchased Transportation	Operating Expenses	Fare Revenues	Uses of Capital Funds	Annual Unlinked Trips	Annual Vehicle Revenue Miles	Annual Vehicle Revenue Hours	Average Fleet Age in Years <sup>1</sup>
Demand Response	2	-	\$149,018	\$0	\$0	2,054	21,500	3,134	7.7
Bus	22	-	\$2,184,169	\$0	\$228,950	816,800	275,473	46,128	6.4
<b>Total</b>	<b>24</b>	<b>-</b>	<b>\$2,333,187</b>	<b>\$0</b>	<b>\$228,950</b>	<b>818,854</b>	<b>296,973</b>	<b>49,262</b>	

### Performance Measures

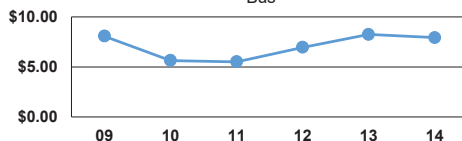
#### Service Efficiency

Mode	Operating Expenses per Vehicle Revenue Mile	Operating Expenses per Vehicle Revenue Hour
Demand Response	\$6.93	\$47.55
Bus	\$7.93	\$47.35
<b>Total</b>	<b>\$7.86</b>	<b>\$47.36</b>

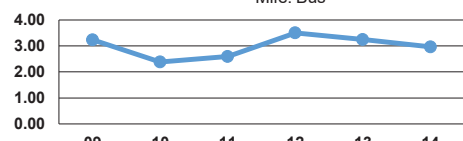
#### Service Effectiveness

Mode	Operating Expenses per Unlinked Passenger Trip	Unlinked Trips per Vehicle Revenue Mile	Unlinked Trips per Vehicle Revenue Hour
Demand Response	\$72.55	0.1	0.7
Bus	\$2.67	3.0	17.7
<b>Total</b>	<b>\$2.85</b>	<b>2.8</b>	<b>16.6</b>

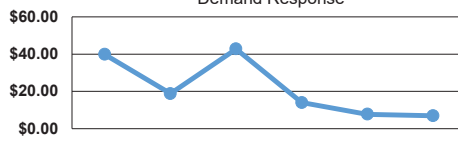
Operating Expense per Vehicle Revenue Mile: Bus



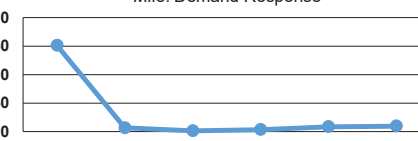
Unlinked Passenger Trips per Vehicle Revenue Mile: Bus



Operating Expense per Vehicle Revenue Mile: Demand Response



Unlinked Passenger Trips per Vehicle Revenue Mile: Demand Response



### Notes:

<sup>1</sup>Demand Response - Taxi (DT) and non-dedicated fleets do not report fleet age data.