

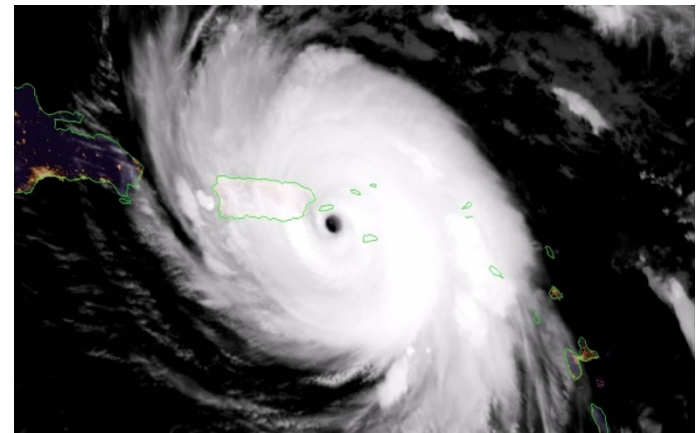
# Hurricane Maria Updates





# September 20, 2018

- Monster Hurricane Maria made landfall in Puerto Rico has a major hurricane category 4 with winds up to 155mph; just two miles shy of a category 5.
- Wind Gusts up to 200mph







# Road Closures

## ROADWAYS AND BRIDGES OPERATIONAL STATUS



### ROADWAYS

TOTAL INCIDENTS REPORTED: **6113**

GEOLOGICAL FAULTS: **2299**

OTHER INCIDENTS: **3814**

### CLOSED ROADWAYS

15

Roadway	Municipality	KM	Roadway	Municipality	KM
PR-109	Añasco	2.2	PR-459	Aguadilla	9.6
PR-110	Moca	14.8	PR-524	Adjuntas	4.0
PR-143	Barranquitas	56.1	PR-525	Adjuntas	4.2
PR-152	Barranquitas	5.2	PR-531	Jayuya	3.1
PR-186	Canóvanas	8.9	PR-556	Coamo	5.8
PR-372	Yauco	13	PR-770	Barranquitas	5.6
PR-377	Guayanilla	1.7	PR-4431	Lares	3.6 - 3.8
PR-441	Aguadilla	2.1			





# Closed Bridges



## BRIDGES

778

Reported DTOP Bridges

778

Inspected Bridges: 100%

Closed Bridges: **9**

### CLOSED BRIDGES **9**

Roadway	Municipality	Bridge #	KM
PR-111	Moca	Temp. Bridge	10.4
PR-111	Moca	Temp. Bridge	10.4
PR-111	San Sebastián	Bridge #1733	13.1
PR-145	Ciales	Bridge #1130	1.0
PR-151	Villalba	Bridge #1962	0.17
PR-354	Mayagüez	Bridge #769	2.2
PR-404	Moca	Bridge #679	4.1
PR-567	Morovis	Bridge #1462	11.7
PR-962	Canóvanas	Bridge #606	1.6

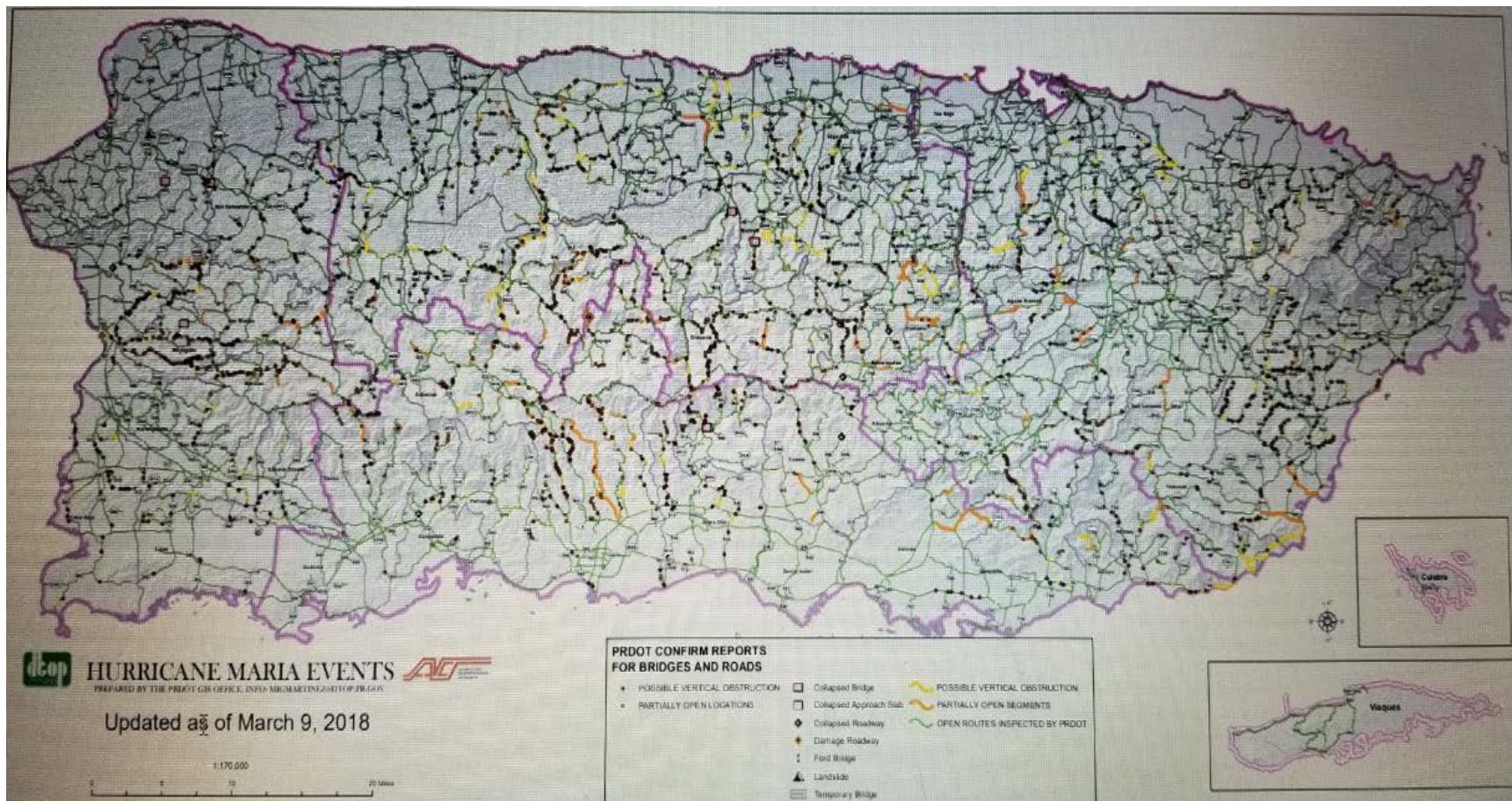
### Additional Information

- Public Works assigned contractors for the debris removal processes and monitoring services Islandwide.
- Auto Expreso's recharge services have been reestablished.
- The roadway safety patrols SEGURO are providing services from 5:30 am to 9:00 pm, Monday through Friday.
- PRHTA is under the continued process of assigning crews to address the following works:
  - Installation of temporary traffic control devices for the safety of roadway users and to indicate detours at confirmed major events.
  - Traffic signals assessment Islandwide.
  - Crews are working on the recommendations and cost estimate to assign contractors for permanent repairs at emergency projects for major landslides.
  - Traffic signing and guardrails design is in progress for permanent improvements Islandwide.





# Status Map

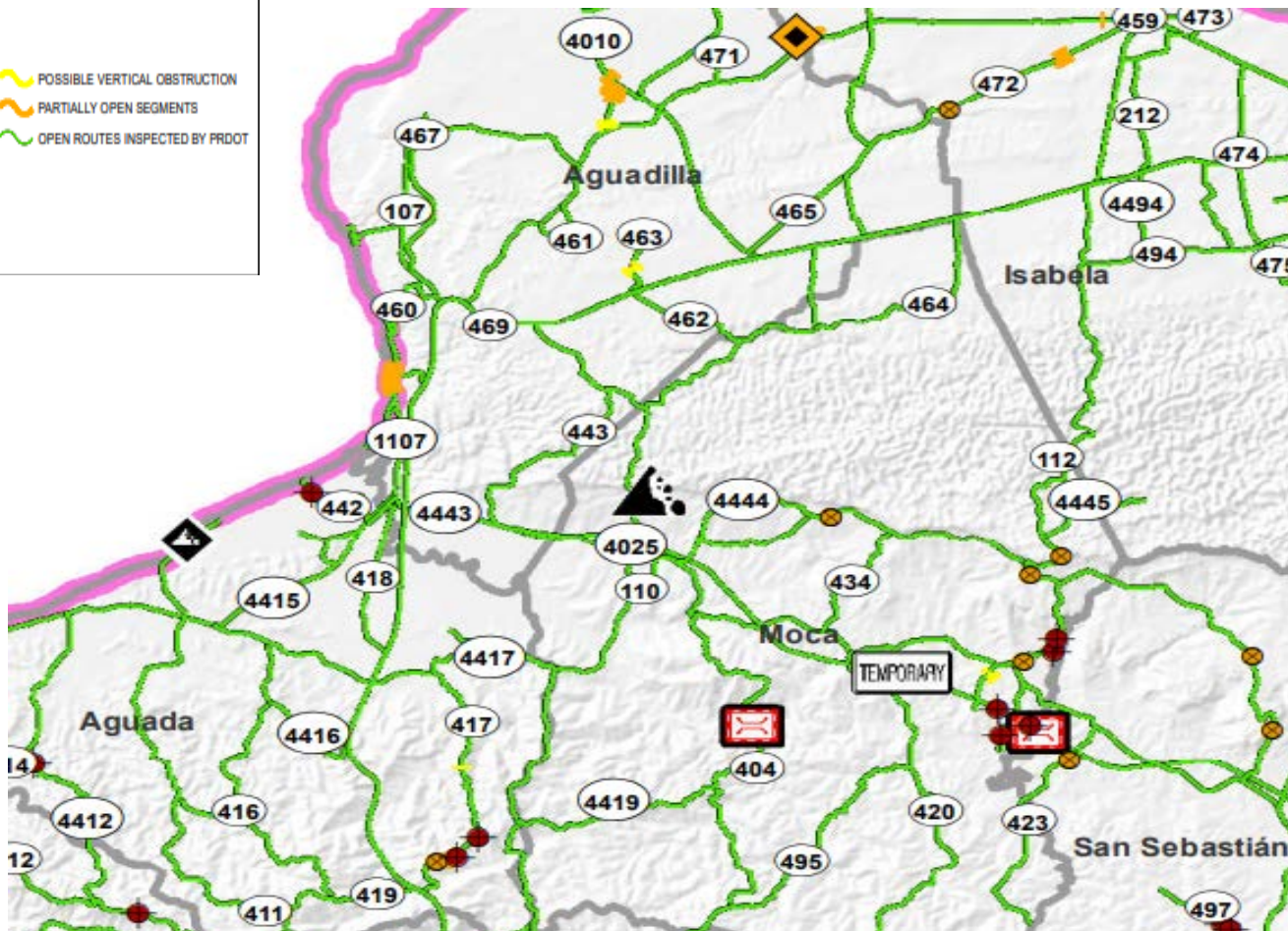




# Zoomed Map

## PRDOT CONFIRM REPORTS FOR BRIDGES AND ROADS

- POSSIBLE VERTICAL OBSTRUCTION
- PARTIALLY OPEN LOCATIONS
- Collapsed Bridge
- Collapsed Approach Slab
- ◆ Collapsed Roadway
- ◆ Damage Roadway
- ⚡ Fort Bridge
- ▲ Landslide
- ▭ Temporary Bridge
- ~ POSSIBLE VERTICAL OBSTRUCTION
- ~ PARTIALLY OPEN SEGMENTS
- ~ OPEN ROUTES INSPECTED BY PRDOT





# Public Transportation Operational Status

## PUBLIC TRANSPORTATION OPERATIONAL STATUS

### Status by type of Route

FULLY OPERATIONAL



#### TRONCAL:



#### CIRCULATION



#### DISTRIBUTION



#### PRIVATE PORTERS

First Transit / Metrobus



### Metropolitan Bus Authority

FULLY OPERATIONAL

#### 23 Routes in Regular Schedule

From 6:00 am to 6:00 pm, excluding Sundays:

- T2: Bayamón- Sagrado Corazón
- T4: Martínez Nadal-Term. Lanchas Cataño
- T5: Covadonga-Iturregui
- T6: Iturregui-Carolina
- T7: Cupey-Carolina
- T8: Martínez Nadal-Piñero
- T9: Covadonga-Cupey
- T21: Sagrado Corazón-Viejo San Juan
- T41: Piñero-Iturregui
- C1: Sagrado Corazón-Río Piedras Capetillo
- C43: Iturregui-Ave. El Comandante
- C44: Carolina-Ave. Calderón
- C51: Carolina-Plaza Escorial
- D13: Cupey-Las Cumbres
- D15: Sagrado Corazón-Cupey
- D18: Martínez Nadal-Cupey
- D26: Piñero-Escuela Venus Gardens
- D27: Martínez Nadal-Col. Quijote Morales
- D37: Toa Baja-Cataño
- D45: Sagrado Corazón-Loiza
- D53: Covadonga -Aeropuerto
- D91: Bayamón-Santa Juanita
- D92: Bayamón-Magnolia



### First Transit / Metrobus

FULLY OPERATIONAL

#### 7 Routes on Weekdays

From 6:00 am to 6:00 pm on weekdays

- T3: San Juan-Sagrado Corazón
- E10: Covadonga Viejo San Juan-TU S. Corazón
- E20: Bo. Campanilla Toa Baja-TU Bayamón
- E40: Piñero-LMM Airport
- C22: Sagrado Corazón-Coliseo Roberto Clemente
- C35: Sagrado Corazón-Centro de Convenciones
- C36: Sagrado Corazón-Isla Verde

### First Transit / Metrobus

#### 2 Routes on Weekends

From 6:00 am to 6:00 pm on weekends

- T3: San Juan-Sagrado Corazón
- E40: Piñero to Airport

### Tren Urbano

LIMITED

Tren Urbano service is operating on its regular schedule, from 5:30 am to 11:30 pm, complemented by the Bus Bridge system until the stations of Piñero and Domenech are repaired.



### Maritime Transport Authority

FULLY OPERATIONAL



#### 3 Routes in Regular Sched.

See below for schedule detail

##### VIEQUES

Fajardo to Vieques:

4:00 am, 9:00 am, 1:00 pm and 6:30 pm

Vieques to Fajardo:

6:00 am, 6:30 am, 11:00 am and 4:30 pm

##### CULEBRA

Fajardo to Culebra:

4:00 am, 9:00 am, 1:30 pm and 6:00 pm

Culebra to Fajardo:

6:00 am, 11:30 am, 4:00 pm and 8:00 pm

##### SAN JUAN:

San Juan - Cataño: 6:00 am to 6:00 pm

in a 30 minute frequency.



### Additional Information

- The 23 routes of MBA are being offered from 6:00 am to 6:00pm, excluding Sundays.
- Paratransit transportation service known as "Lame y Viaje" is being offered, as previously arranged with users in a regular schedule basis.
- Transportation service from the Convention Center is being offered based on requests.
- Tren Urbano service is operating on its regular schedule, from 5:30 am to 11:00 pm. Is being complemented by the Bus Bridge system until the stations of Piñero and Domenech are repaired.
- The regular fare for the Tren Urbano was reestablished and the Bus Bridge system is offered free of cost.







# Public Service Operational Status

## PUBLIC SERVICES OPERATIONAL STATUS



CESCO/DISCO LOCATION	OPERATING	HOURS
Mayagüez	●	7:30 am – 4:00 pm
Arecibo	●	7:30 am – 4:00 pm
Utuado	●	7:30 am – 4:00 pm
Sagrado Corazón	●	7:30 am – 4:00 pm
Humacao	●	7:30 am – 4:00 pm
Caguas	●	7:30 am – 4:00 pm
Carolina (Metropolitano)	●	7:30 am – 4:00 pm
Ponce	●	7:30 am – 4:00 pm
Manatí	●	7:30 am – 4:00 pm
Fajardo	●	7:30 am – 4:00 pm
Guayama	●	7:30 am – 4:00 pm
Aguadilla	●	7:30 am – 4:00 pm
Bayamón	●	7:30 am – 4:00 pm
Río Piedras	●	N/A
Barranquitas	●	7:30 am – 4:00 pm
Minillas Sur	●	8:00 am – 4:00 pm
Minillas CSI	●	8:00 am – 4:00 pm



Operating CESCO's:

14 of 15



**Additional Information**

- CESCO limited services are being offered in the municipalities listed, based on the availability of power and communication resources. Services are not provided on Sundays.
- The CESCO's services in Río Piedras will be renewed when the building conditions are reestablished.
- The Integrated Services Center (CSI, for its Spanish acronym) at the Minillas Government Center (North Building) is offering CESCO services.





# Mass Exodus

- More than 200,000 people have left Puerto Rico. Making it more difficult to recover.





# STATUS.PR.GOV



92.90%

AEE Generation



Last update: 12/mar/2018

Source: AEE

Note: Representa el 91.18% de los abonados.

AAA

96.05%



99.53%

Metro

94.24%

North

83.71%

West

99.91%

South

99.17%

East

Last update: 12/mar/2018

Source: AAA

Note: El 96.05% significa 1,180,802 contadores activos.





# Relief Efforts

- Allocation from Congress of \$330M to be distributed among the states and territories impacted by hurricanes.
- The Secretary from the Puerto Rico Department of Transportation and Public Works has granted the use of “Toll Credits” not only to the sub-recipients but also to all Grantees for all new transportation projects.





GOBIERNO DE PUERTO RICO

Departamento de Transportación y Obras Públicas

**#PuertoRico**  
**SeLevanta**

