

A VULNERBILITY & RISK ASSESSMENT OF SEPTA'S MANAYUNK/NORRISTOWN LINE

Erik Johanson

Strategy & Sustainability Planner

March 22, 2012

SEPTA:
Partnering for
Regional
Sustainability



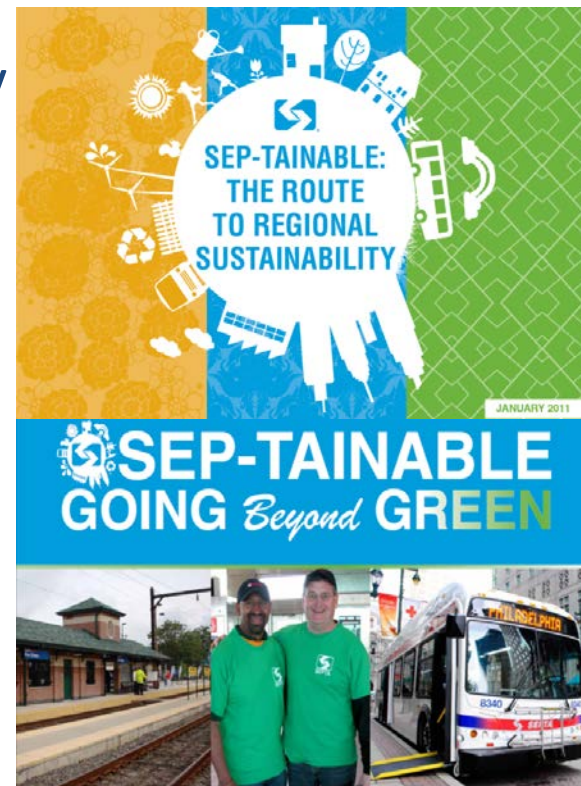
WHY CLIMATE ADAPTATION?

SEPTA SUSTAINABILITY PROGRAM

SEPTA:
Partnering for
Regional
Sustainability

THREE PRINCIPLES

- **Budget-Neutral**
 - Business Case for Sustainability
 - FTA Grant Program Provides New Resources
- **Focus on Existing Assets**
 - Aging System is Expansive & Increasingly Vulnerable
- **Provide Multiple Benefits**
 - Emergency Preparedness & Response; State of Good Repair; Infrastructure Resiliency



PROJECT APPROACH

SEPTA:
Partnering for
Regional
Sustainability

➤ Partnership

- ICF – Climate Science & Adaptation Strategy
- DVRPC (MPO) – Stakeholder Convening
- SEPTA – Engineering & Strategic Planning

➤ Narrow Scope & Nuanced Criteria

- Single Rail Line
- Inland Region

➤ Data Collection

- Asset Inventory
- Service Disruptions
- Operational Impacts

➤ Stakeholder Participation

- Integrate With Other Regional Initiatives



STAKEHOLDER GROUP

SEPTA:
Partnering for
Regional
Sustainability

➤ First Meeting: March 14

PARTICIPANTS

FEDERAL	STATE	LOCAL	TRANSIT
EPA – Regional Office	PA DEP – Headquarters	Mayor's Office – Transport & Utilities	NJ Transit
FTA – Headquarters & Regional Office	PA DEP – Regional Office	Mayor's Office – Sustainability	Amtrak
FEMA – Regional Office	Penn DOT	Planning Commissions – City & Suburban Counties	Port Authority Transit
	PEMA	City Water Department	
		City Law Department	
		City Health Department	

PROJECT TASKS

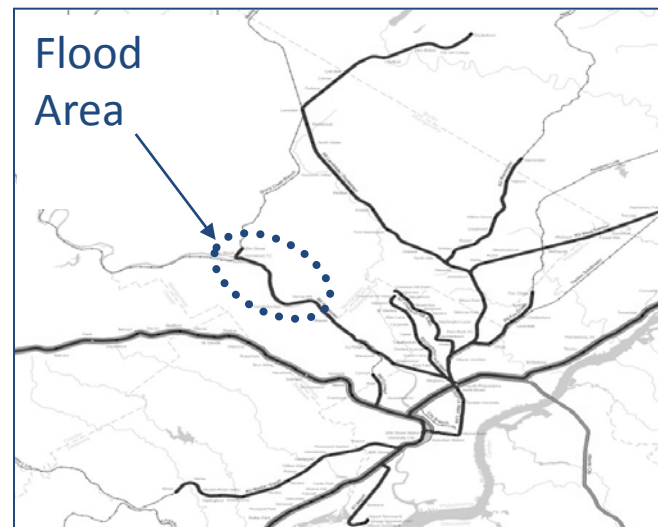
SEPTA:
Partnering for
Regional
Sustainability

- **Task 1: Regional Rail Screening & Asset Inventory**
 - Convene stakeholders; complete inventory (Feb-Apr)
- **Task 2: Analyze Weather-Induced Service Disruptions**
 - Catalog & analyze disruptions; contextualize with weather data (Apr-May)
- **Task 3: Build Scenarios Based on Climate Data & Models**
 - Analyze historical patterns; develop future scenarios (Jun-Jul)
- **Task 4: Assess Risk & Prioritize Impacts**
 - ID priority assets & how projected change may increase risk (Aug-Oct)
- **Task 5: Adaptation Efforts**
 - Integrate findings from Tasks 1-4; recommend adaptation strategies; solicit feedback from stakeholders (Nov-Dec)
- **Task 6: Final Report** (Jan-Mar, 2013)

ANTICIPATED OUTCOMES

SEPTA:
Partnering for
Regional
Sustainability

- **Assignment of Cost**
 - Passenger Delays
 - Workforce Impacts
 - Capital Infrastructure Repair
- **Practical Guidance**
 - Inform Adaptation Strategy with Operational Realities
 - Scalable, Transferrable Model
- **Lasting Partnerships**
 - Capacity-Building Exercise for Broader Regional Adaptation Initiatives



SEPTA:
Partnering for
Regional
Sustainability

Strategy & Sustainability Planner

The logo features a central white silhouette of a person standing with arms raised, set against a blue background with radiating lines. The text "SEPTA+" is written across the chest, and "SUSTAINABILITY" is written below it. Various white icons are arranged around the figure, including a sun, wind turbine, solar panel, recycling symbol, train, bus, bicycle, house, tree, and other symbols of environmental friendliness.