

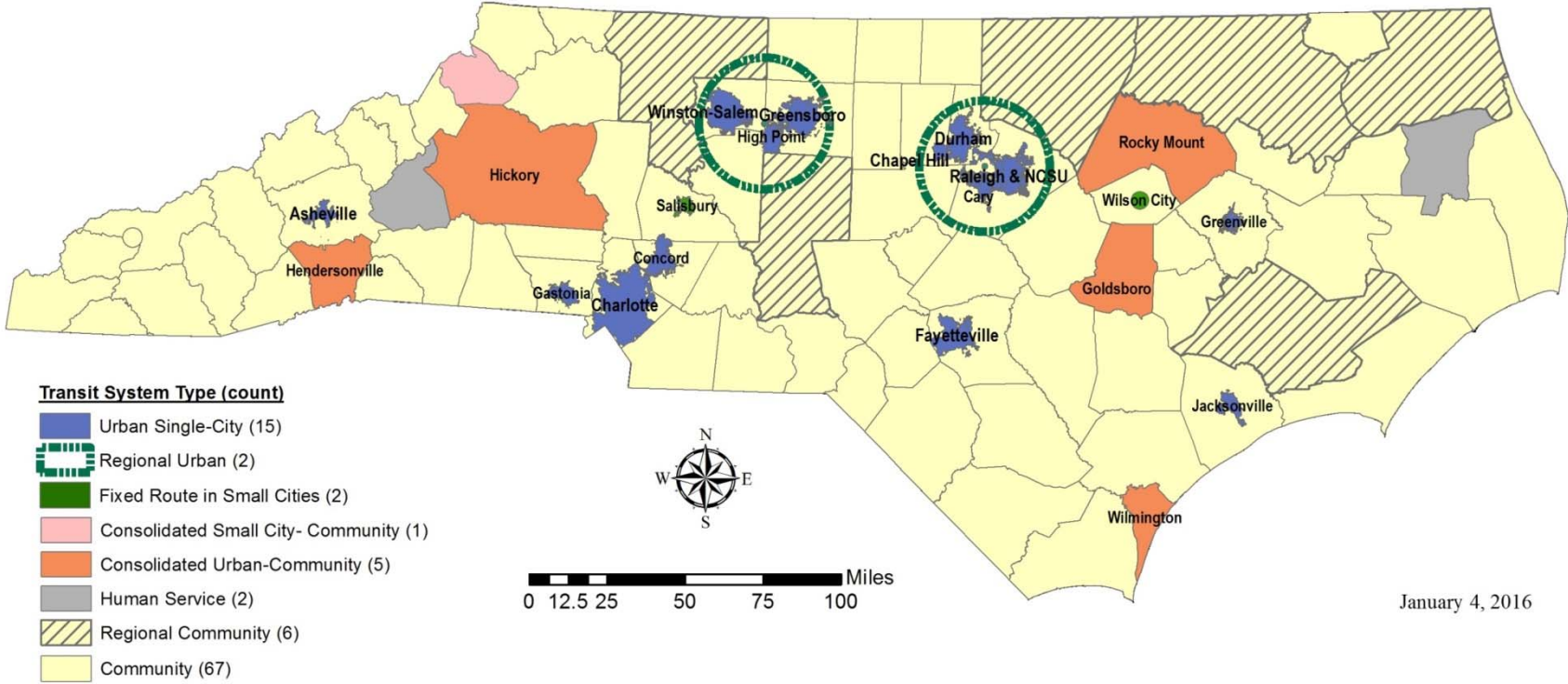


*FTA's States Meeting*  
*April 27, 2016*

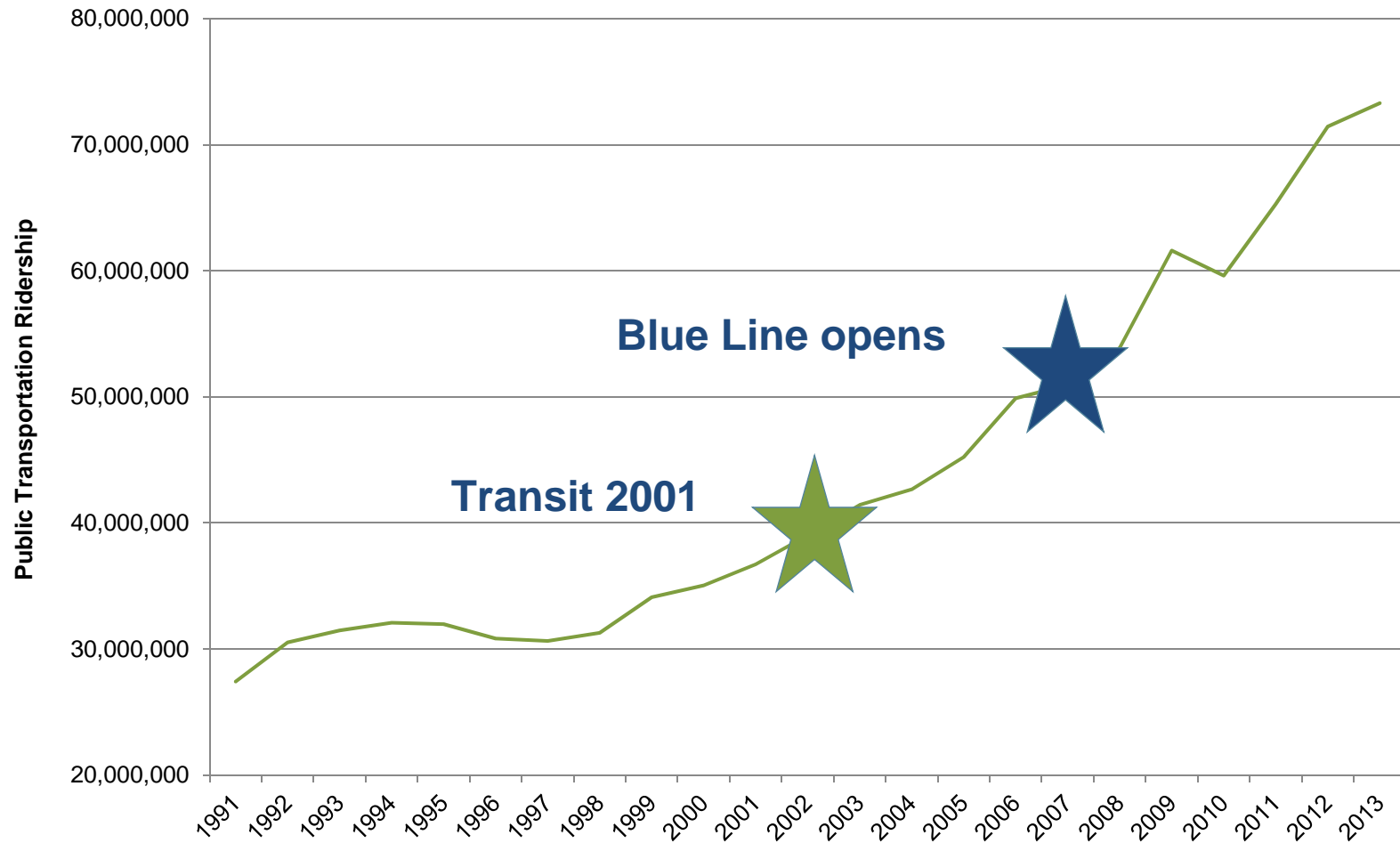
Debbie Collins



# PUBLIC TRANSPORTATION SYSTEMS IN NORTH CAROLINA BY CATEGORY



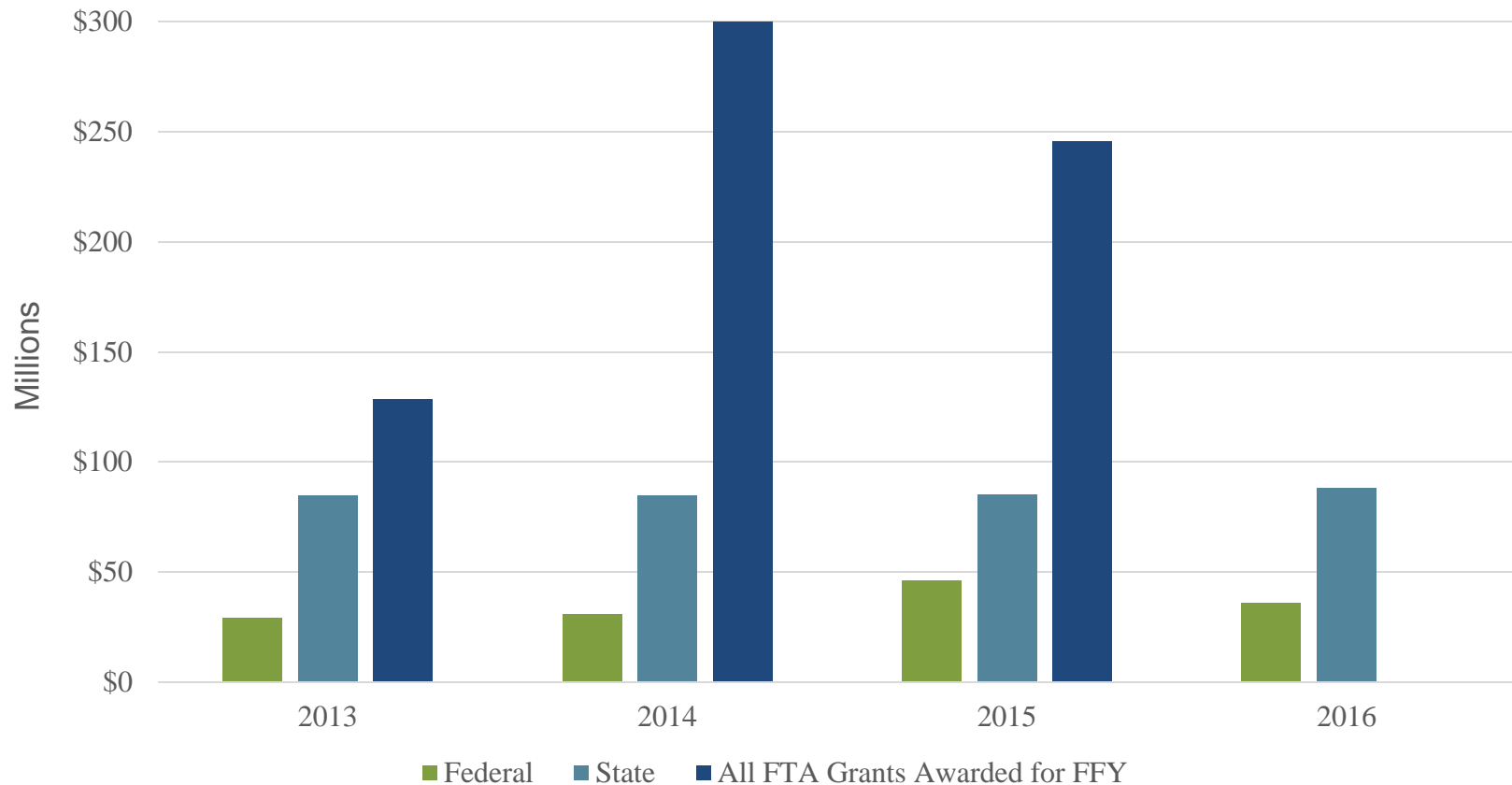
# NC Public Transit Fastest Growing in Southeast



Source: National Transit Database



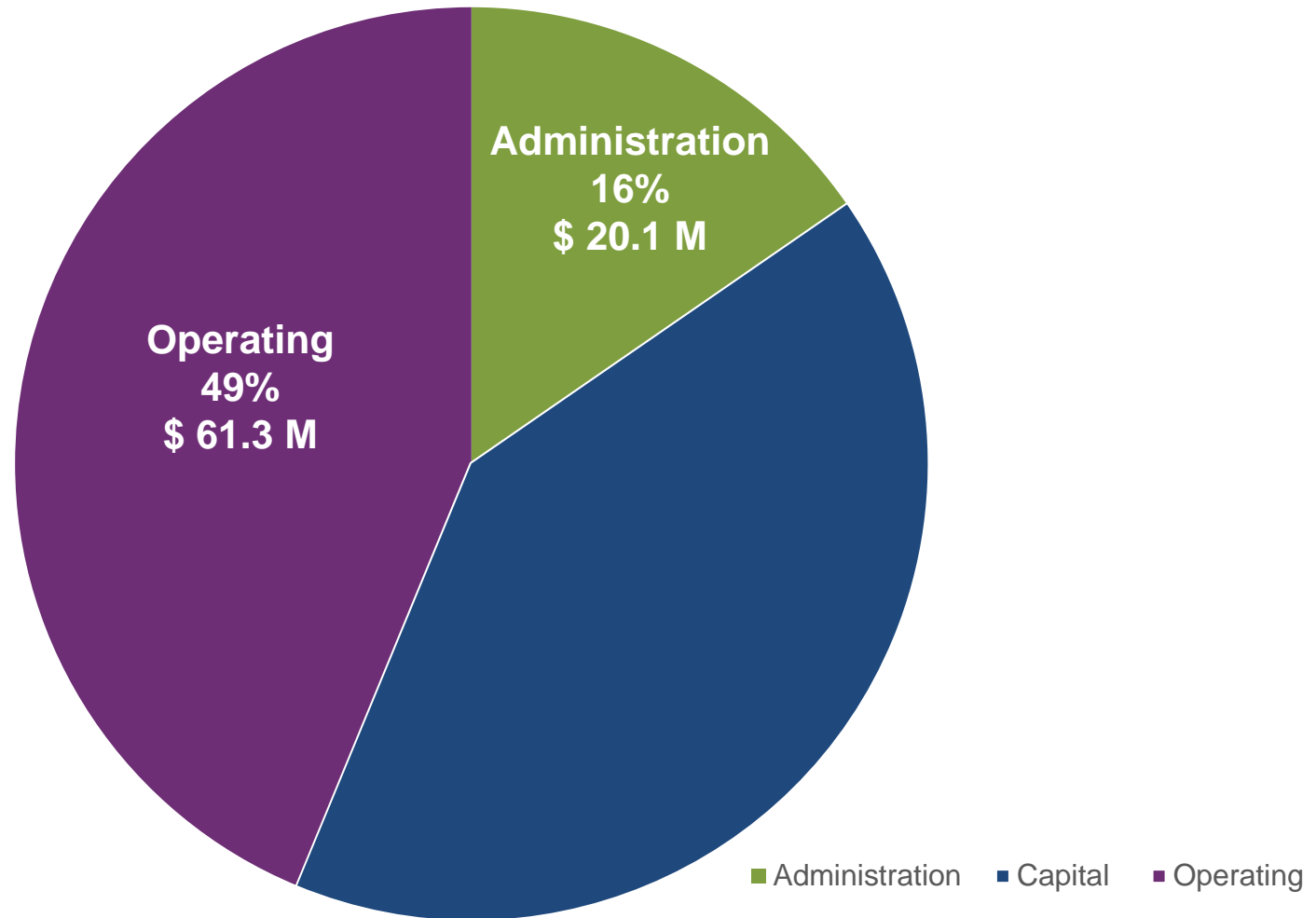
## *Funding Managed by NCDOT: Federal and State Funded Projects by Fiscal Year*



\*FTA Grants for FFY 2016 not yet available



## *FY 16 Funding Distributed by NCDOT: by Expense Category*



## State Funding Categories

State Operating Assistance	<ul style="list-style-type: none"><li>• Urban (SMAP)</li><li>• Rural (ROAP)</li><li>• International Trade Show Transportation</li></ul>	\$48.8 M
FTA Matching Assistance	<ul style="list-style-type: none"><li>• Administration</li><li>• Capital</li><li>• Operating</li><li>• Planning</li></ul>	\$36.5 M
State Programs	<ul style="list-style-type: none"><li>• Interns &amp; Apprentices</li><li>• Technology</li><li>• Transportation Demand Management</li></ul>	\$2.9 M



# Need for a Funding Study



- New funding methodology
  - PTD had frozen funding levels in certain categories since 2008
- Identify state funding needs
- Five (5) year financial plans
  - Division
  - Sub recipients
- Adapt to 2010 Census changes
  - NC Urbanized - Population shifted from 40% urban in 2000 to 60% urban in 2010, changing transit system classifications
  - Shift in how Federal funds flow



## *Today's Presentation Organization*

1. Funding  
Study

2. Graduation  
Analysis





## North Carolina Population Change

	Population			Change 2000 to 2010	
	1990	2000	2010	#	%
North Carolina Urbanized Population	2,452,636	3,761,411	5,232,799	1,471,388	<b>39.1%</b>
North Carolina Non-urbanized Population	4,176,001	4,287,899	4,120,684	(167,215)	<b>-3.9%</b>
North Carolina Population	6,628,637	8,049,310	9,353,483	1,304,173	16.2%
Total United States Population	248,709,873	281,421,906	308,745,538	27,323,632	9.7%

	State	Population 2015	Population per sq. mi. 2015
<b>9.</b>	<b>NC</b>	<b>10,042,802</b>	<b>206.6</b>

**2030 Population Projections – 3 M new NC residents**



Geography QuickFacts - <http://www.census.gov/popclock/>

## *Community Transportation Funding Goals*

Goals	Alt #1	Alt #2	Alt # 3	Alt #4	Alt #5
Every county gets funding	X	X	X	X	X
Equitable	X	X	X	X	X
Simplified / transparent	X	X	X	X	X
Flexible	X	X	X	X	X
Supports coordination model	X	X	X	X	X
Supports regionalism	X	X	X		X
Rewards performance		Prerequisite			X
Denotes when grantees get facilities			X		



# *New Funding Structure for Community Transportation Systems*

- Supports administration and operations
- Capital focus on replacement vehicles
- Three tiered formula:
  - Base tier:
    - \$30,000 is allocated for every county a community transportation system serves
  - Needs tier:
    - Uses FTA 5311 Formula - rural population, rural land area, low-income population and revenue vehicle miles
  - Performance tier:
    - 10% of total 5311 and 5340 grantee funding
    - Allocation based on performance and PTD will be working with the systems to develop the criteria.

*The study uses unlinked passenger trips but needs additional evaluation*



# *Funding Study 5 Year Budget and Recommendations*

- 5 year budgets
  - Public Transportation Division
  - All Community Transportation Systems
- Transition budgets in FY 18 and FY 19
- FTA 5311 formula funding available as
  - Administration funding (with an 80% federal and 5% state share) or
  - Operating funding (with a 50% federal share)



## *Base Case NCDOT Budget Overview*

Grant Type (Urbanized, Non-Urbanized or Statewide)	Funding Purpose	Total Federal & State Funds for Grantees
Non-Urbanized Area Grantees	<b>Administration</b> (or operating, if a grantee opts for that and provides the required local match)	\$15,545,345
	<b>Operating</b>	\$19,085,130
	<b>Capital</b> (Vehicle Replacement and Other Capital Projects)	\$13,029,297
	<b>Other</b>	\$4,649,100
Urbanized Area Grantees	<b>Operating</b>	\$31,155,328
	<b>Capital</b>	\$4,236,470
	<b>Other</b>	\$3,714,434
All Grantees	<b>Other</b>	\$1,781,999
State Legislative Funding	<b>Capital</b>	\$26,200,000
State Direct Spending	<b>Administration and Other</b>	\$6,635,189
<b>Total</b>		<b>\$126,032,292</b>

Not affected in the alternatives

Affected in the alternatives



## *Funding Study Needs Identified*

- Operating assistance to support the current funding for consolidated and regional systems
  - Grow to promote new regional systems
- Additional funding in the urban operating assistance program
  - Currently geared towards fixed route providers only
  - Growing number of urban systems
- Additional funding for urban capital project match
  - Current focus on replacement buses
  - 10% state match
- Additional support for employment transportation in rural areas
  - Determined in upcoming strategic plan
- Additional funding for rural replacement vehicles

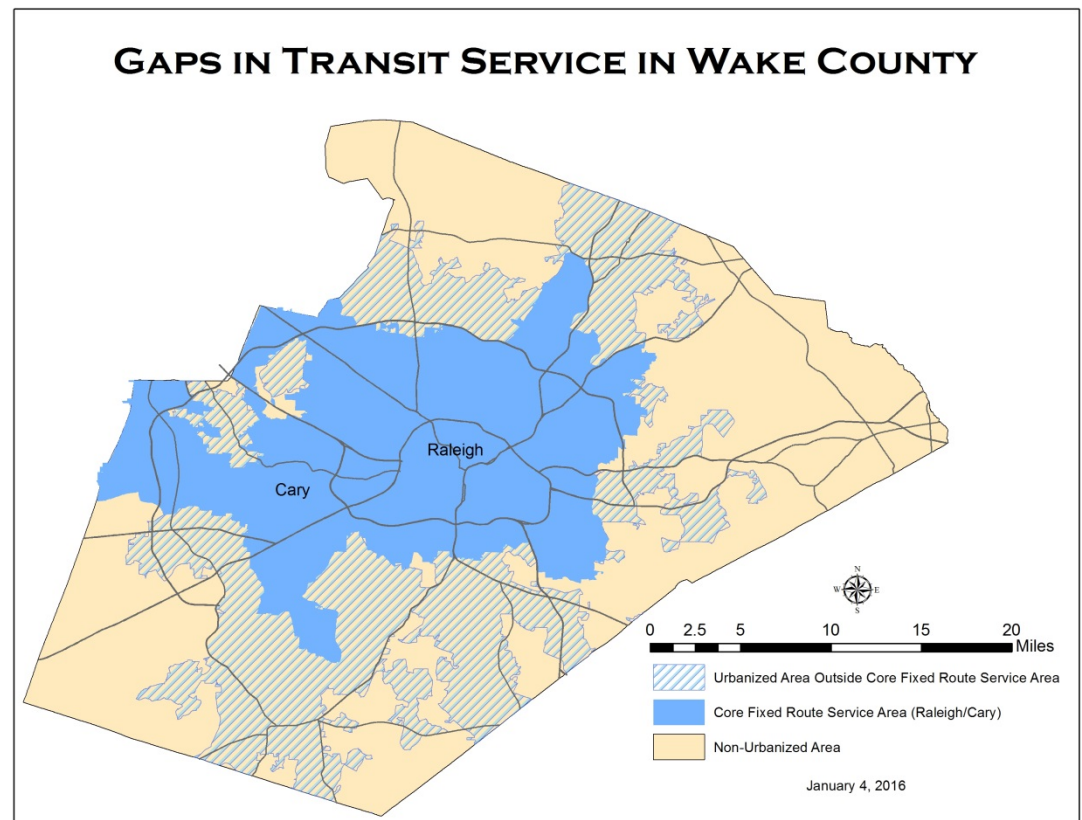


# *Graduation Study*



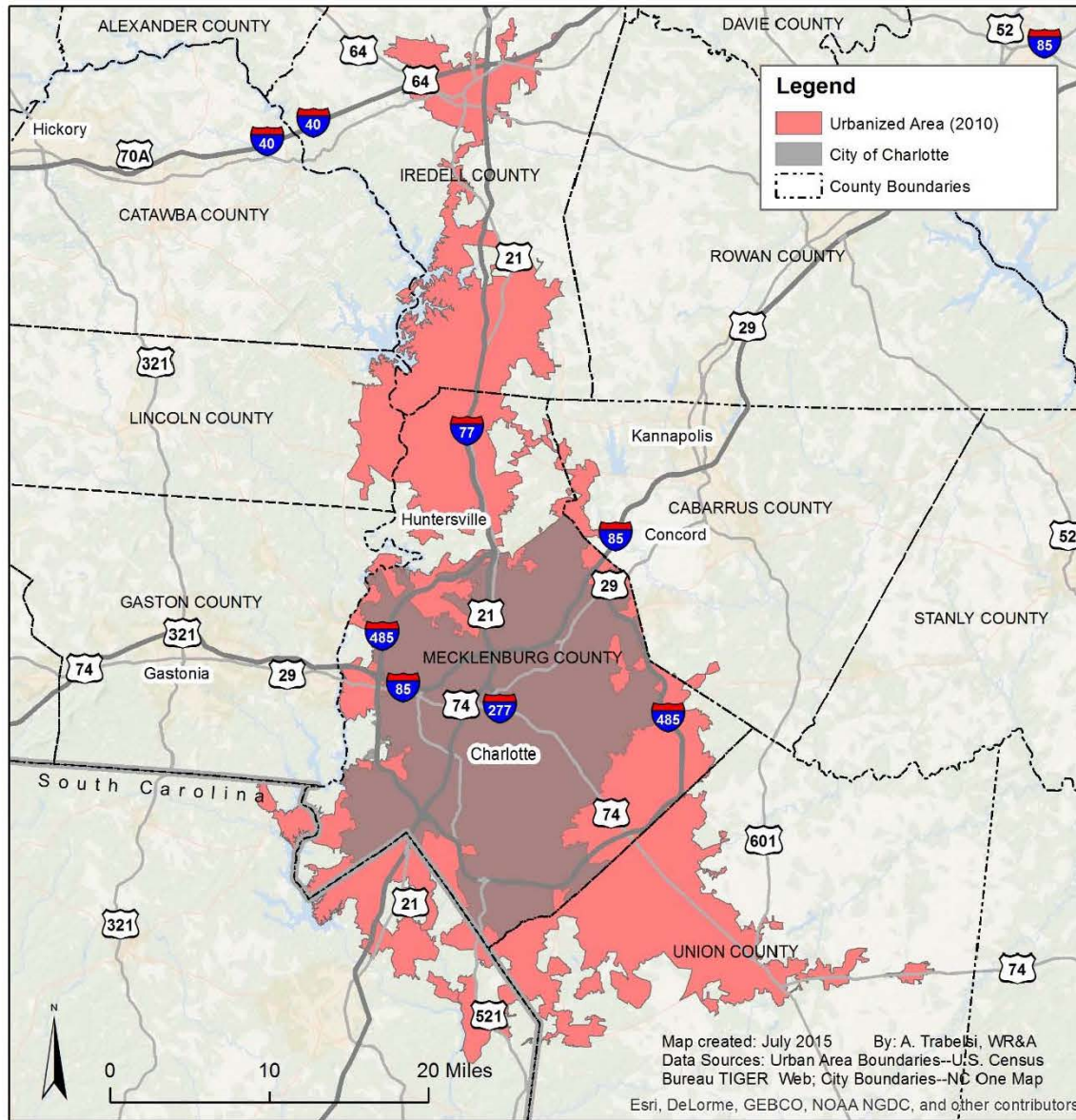
# Urbanization of North Carolina

- Major federal funding shifts (map shows affects)
  - 5307
  - 5310
  - 5311
  - 5339
- Fear of funding uncertainties
  - Started Dialogue in April 2014
- Lack of local funding decisions
  - Only two MPOs – DCHC and CAMPO – have tackled the question of fair and equitable distribution

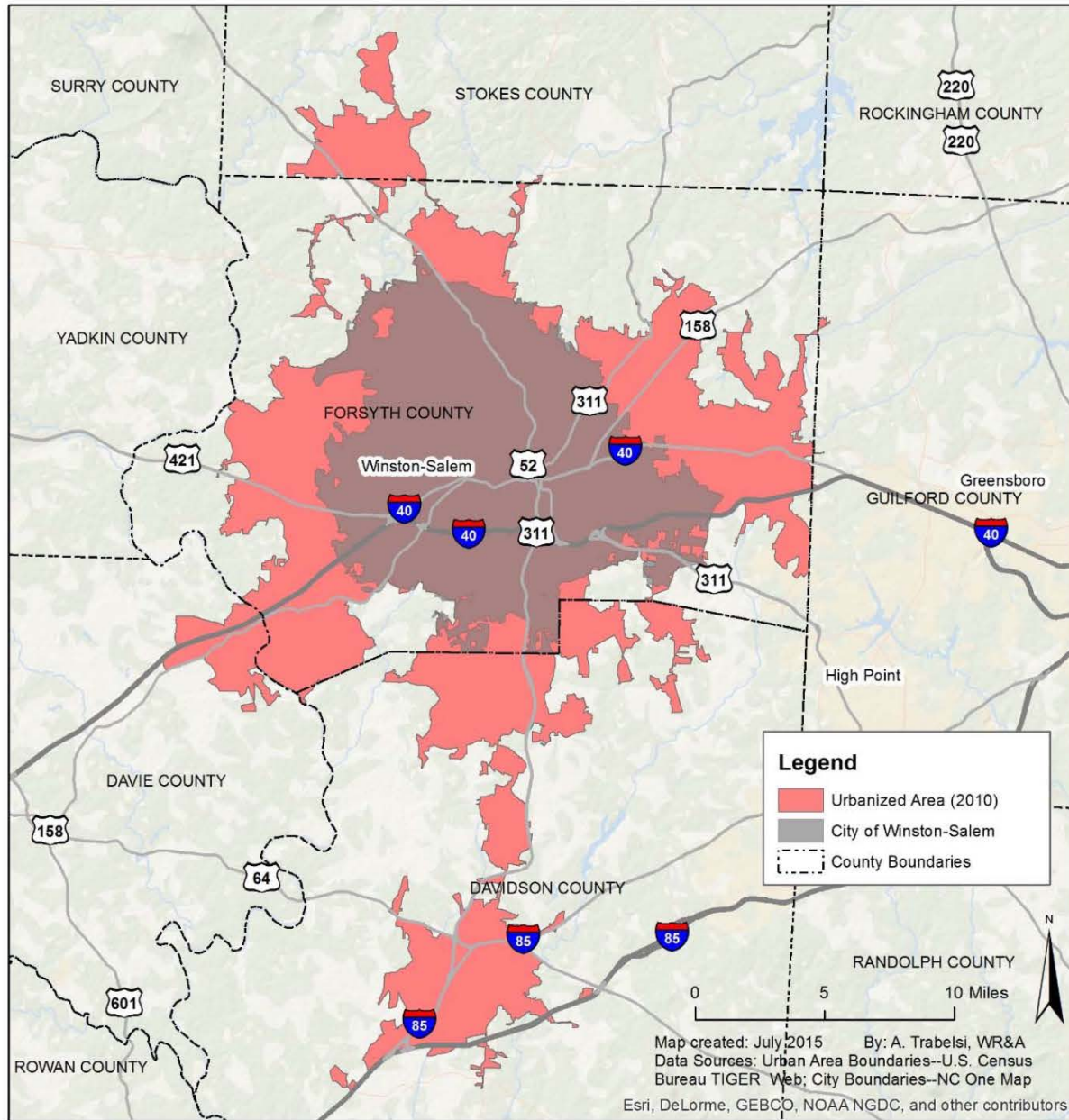




# Charlotte 2010 Urbanized Area



# Winston-Salem 2010 Urbanized Area



## *FTA Formula Distribution Factors*

Size of Area Population	Population	Population Density	Revenue Miles	Low Income	Efficiency Incentive	Land Area (Sq. Miles)	Persons older than 65 and disabled
Greater than 1,000,000 persons	✓	✓	✓	✓	✓		✓
200,000 to 999,999 persons	✓	✓	✓	✓	✓		✓
50,000 to 199,999 persons	✓	✓		✓			✓
Less than 50,000 persons	✓		✓	✓		✓	✓



## *FTA Formula Program 5307 / 5311 Rates*

<b>Greater than 1,000,000 (5307)</b>			
	FY2014	FY2015	Pct Change
Population	3.106355	3.09948	-0.22%
Population Density	0.000828	0.000826	-0.22%
Revenue Miles	0.419968	0.419393	-0.14%
Low Income Population	2.27932	2.274376	-0.22%
Land Area			
Efficiency Incentive	0.009384	0.009664	2.98%

<b>200,000-1 million (5307)</b>			
	FY2014	FY2015	Pct Change
Population	2.687494	2.681547	-0.22%
Population Density	0.001228	0.001226	-0.22%
Revenue Miles	0.547377	0.534805	-2.30%
Low Income Population	2.279320	2.274376	-0.22%
Land Area			
Efficiency Incentive	0.009384	0.009664	2.98%

<b>50,000-199,999 (5307)</b>			
	FY2014	FY2015	Pct Change
Population	6.300360	6.286417	-0.22%
Population Density	0.003208	0.003201	-0.22%
Revenue Miles			
Low Income Population	4.052752	4.043962	-0.22%
Land Area			
Efficiency Incentive			

<b>&gt;50,000 (5311)</b>			
	FY2014	FY2015	Pct Change
Population	4.041135	4.035655	-0.14%
Population Density			
Revenue Miles	0.046371	0.047212	1.81%
Low Income Population	1.642215	1.639988	-0.14%
Land Area	34.09	34.05	-0.12%
Efficiency Incentive			



## Recommended 5307 / 5340 Funding Allocation

UZA	Jurisdiction	Urban Transit	Allocation Data				5307/5340 Funding Allocation									
			Population	Population Density	Low Income Population	Revenue Miles	Urbanized Population Allocation	Population Density Allocation	Low Income Population Allocation	Revenue Vehicles Miles Allocation	5307 without Performance	Performance Tier Eligible Systems	Performance Allocation	5340 Total	FY2015 Allocation	
<b>FY 15 5307 Rates</b>			<b>2.6815465</b>	<b>0.0012257</b>	<b>2.2743763</b>	<b>0.5348053</b>										
<b>Asheville, NC</b>			<b>280,648</b>	<b>1,060</b>	<b>76,355</b>	<b>1,967,574</b>	<b>\$752,571</b>	<b>\$364,448</b>	<b>\$173,660</b>	<b>\$1,052,269</b>	<b>\$2,342,948</b>	<b>2</b>	<b>\$786</b>	<b>\$247,656</b>	<b>\$2,591,390</b>	
	City of Asheville	Asheville Transit	83,175	1,893	22,629	888,930	\$223,038	\$108,011	\$51,467	\$475,404	\$857,920	1	\$679	\$90,684	\$949,283	
	City of Hendersonville	Henderson County Transit	13,137	1,893	3,574	204,571	\$35,227	\$17,060	\$8,129	\$109,406	\$169,822	1	\$107	\$17,951	\$187,880	
	Buncombe		97,757	891	26,596	715,000	\$262,140	\$126,947	\$60,490	\$382,386	\$831,963			\$87,941	\$919,904	
	Haywood		26,306	1,084	7,157	159,073	\$70,541	\$34,161	\$16,278	\$85,073	\$206,052			\$21,780	\$227,833	
	Henderson		58,090	745	15,804		\$155,771	\$75,435	\$35,945		\$267,152			\$28,239	\$295,390	
	Madison		1,948	1,213	530		\$5,224	\$2,530	\$1,205		\$8,959			\$947	\$9,906	
	McDowell		0	0	0						\$0			\$0	\$0	
	Transylvania		235	740	64		\$630	\$305	\$145		\$1,081			\$114	\$1,195	



# Graduation Analysis Recommendations

## All Systems

- Every transit system must report annually and accurately to the National Transit Database (5311 and 5307)
  - FTA 5307/5340/5339 funding is determined in part by vehicle revenue miles



## Small Urbanized Area Systems (less than 200,000 population)

- NCDOT will follow the FTA regulations that allow the State to decide the distribution and programming of the transit system funds
  - Funding decisions will be made in consultation with the eight small urban transit systems and Metropolitan Planning Organizations (MPOs)
  - Capital planning will be included



## *Recommendations for Large Urbanized Areas (UZAs)*

- With each census and / or change in federal funding programs
  - UZAs over 200,000 will develop a fair and equitable distribution formula
  - NCDOT PTD will be asked to concur with the formula
- Following FTA's annual funding announcement (apportionment)
  - Public Transportation Division (PTD) will develop and publish a funding distribution for each urbanized area consistent with the current FTA formula
- UZAs will submit their MPO adopted Transit Program of Projects for NCDOT PTD approval as part of the State Transportation Improvement Program (STIP) amendment process
  - PTD will compare it to the fair and equitable distribution formula submitted earlier
  - Upon approval, State Maintenance Assistance Program (SMAP) funds can be allocated to eligible recipients
- The MPOs and transit systems must work with the NCDOT to implement a Transit Asset Management system that funds a proportional percent of the Community Transportation Systems' vehicle fleet with urban funding
- NCDOT should assume oversight of ALL of the NC Community Transportation systems receiving FTA 5311 and 5307 funds



*Thank you!*



Debbie Collins

[dgcollins1@ncdot.gov](mailto:dgcollins1@ncdot.gov)

919 707 4684



*Transportation*