



Charlotte Area Transit: Building the Future

John Muth, Interim CEO

2015 Southeastern Regional Transit Conference

Atlanta, GA

May 15, 2015

Charlotte Facts

Population: 775,202

- 17th most populous city in the U.S.
- 1 million residents by 2030

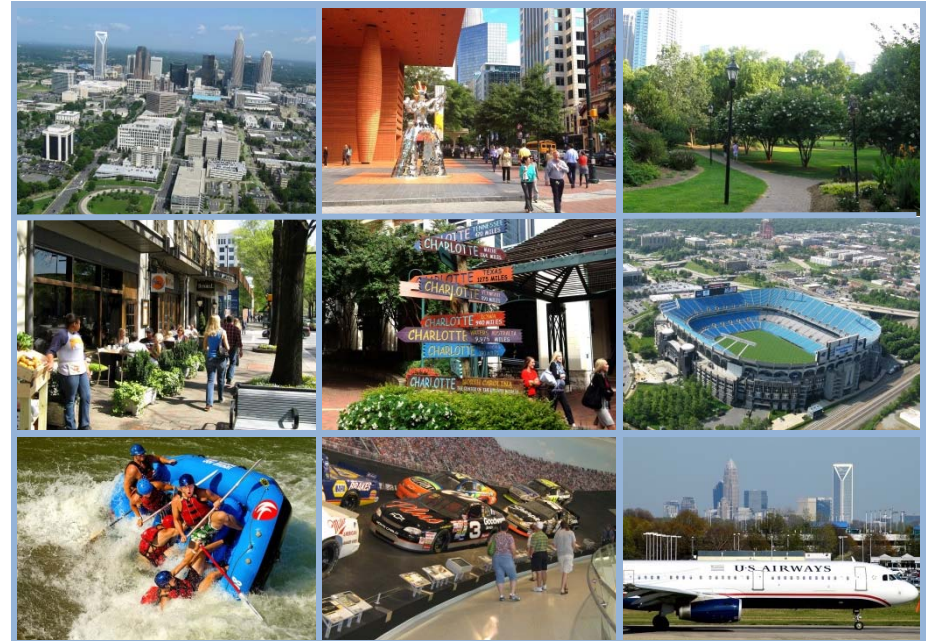
Area: 300 square miles

Economy:

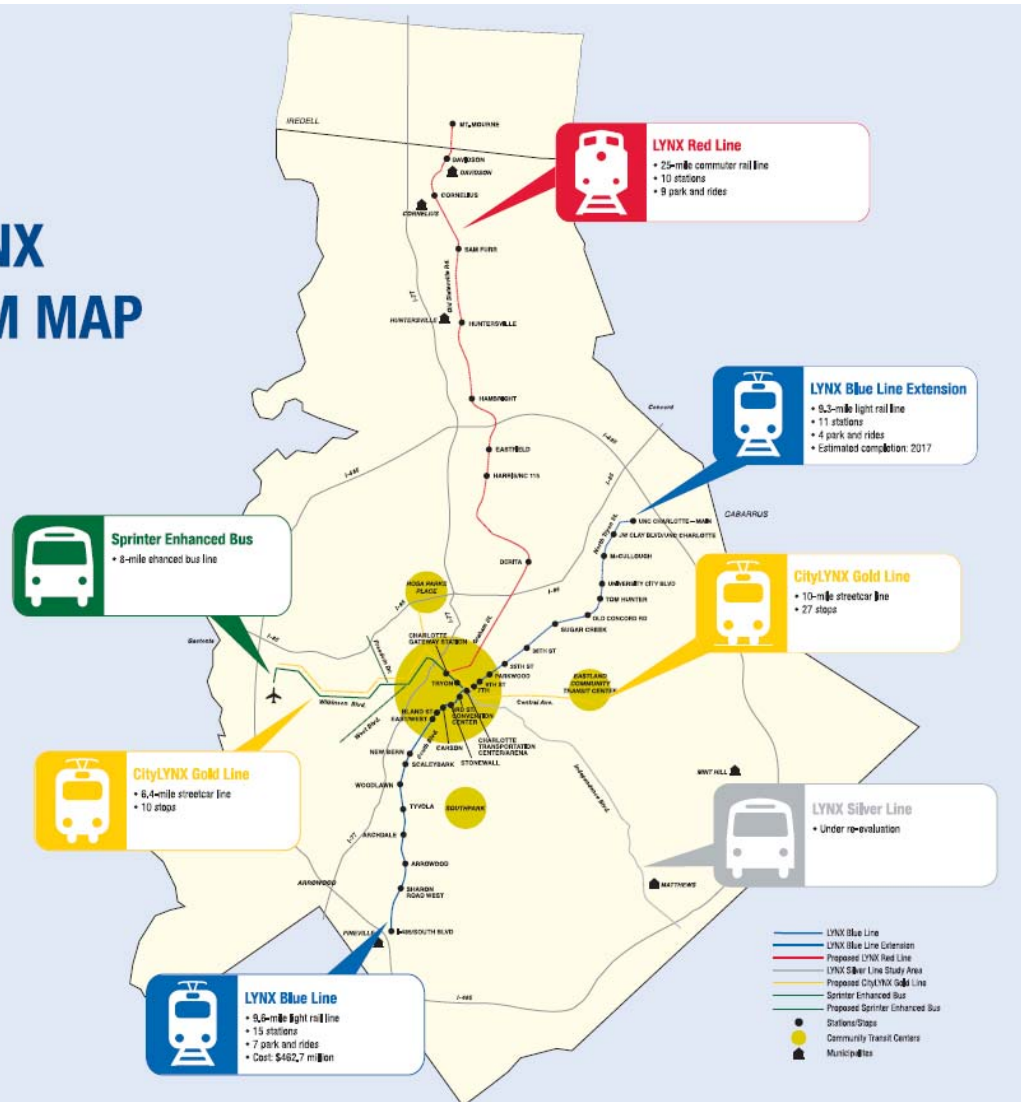
- Nation's 2nd largest financial center with \$2.3 trillion in assets
- Home to eight Fortune 500 companies including Bank of America and Duke Energy
- Manufacturing payroll of \$3.1 billion

Charlotte-Douglas International Airport (CLT)

- U.S. Airways east coast hub
- World's 6th busiest for takeoffs and landings
- Nation's 11th busiest for passengers served



LYNX SYSTEM MAP



LYNX Blue Line

- Opened November 24, 2007
- 9.6 Miles
- \$462.7 Million
- 15 Stations (7 park and rides)
- Operates 7 days a week,
5:30 a.m. - 1:30 a.m.
- Service Frequency
 - Rush hour: 10 minutes
 - Non-rush hour: 20 minutes
- Bus/Rail Integration serves Blue Line directly
 - 15 new and modified routes



LYNX Blue Line Success

- Ridership
 - 15,000 – 17,000 daily
 - 27,000 – 35,000 special events
 - 5 million annual
- \$462.7 million capital investment was a fund partnership between
 - USDOT \$199.0 m (43%)
 - NCDOT \$115.0 m (25%)
 - City/CATS \$148.7 m (32%)
- \$10 million annual operating cost is paid from the local half-cent Sales & Use Tax revenue



LYNX Blue Line



LYNX Blue Line



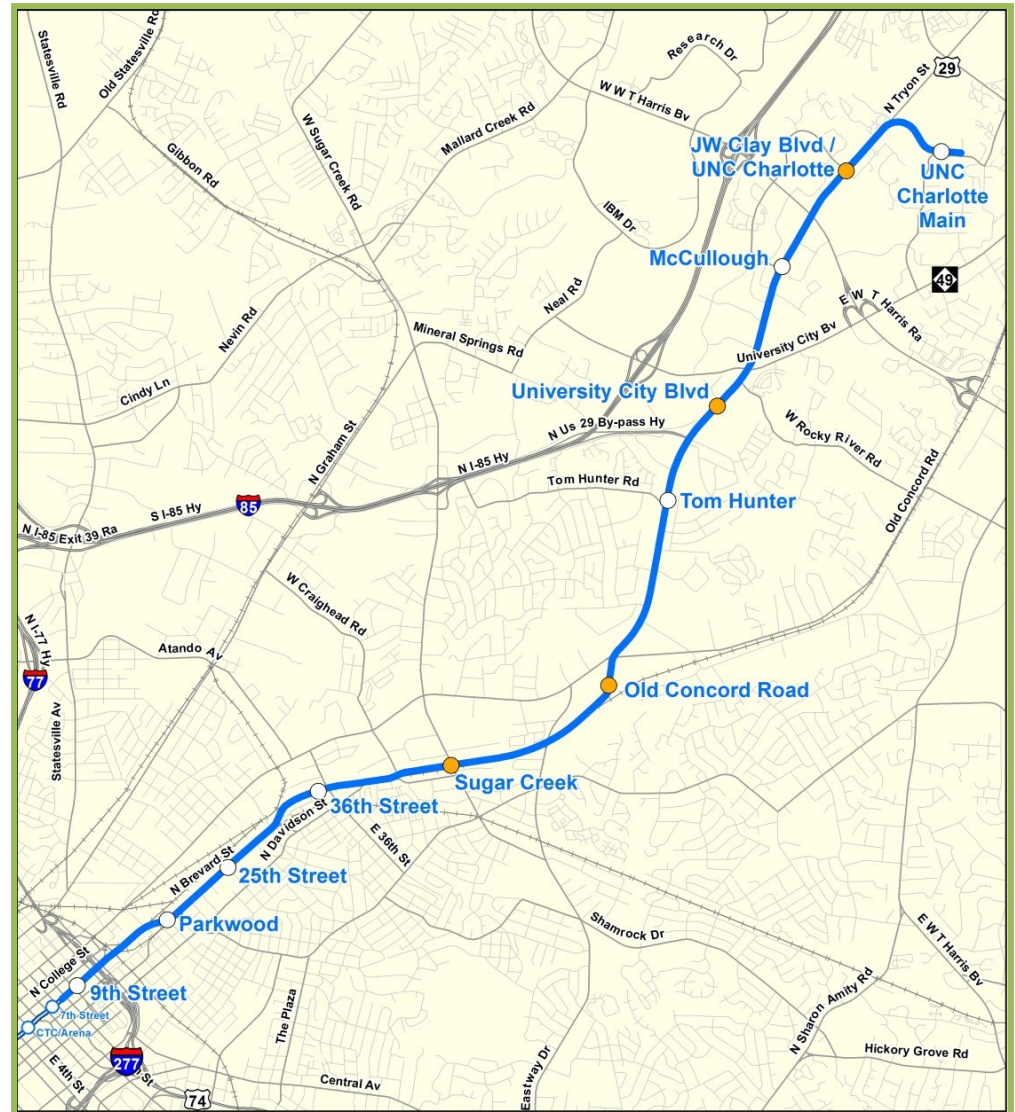
Transit-Oriented Development on the Blue Line

- Created \$900 million in private development
- Another \$400 million of development planned or under construction along corridor

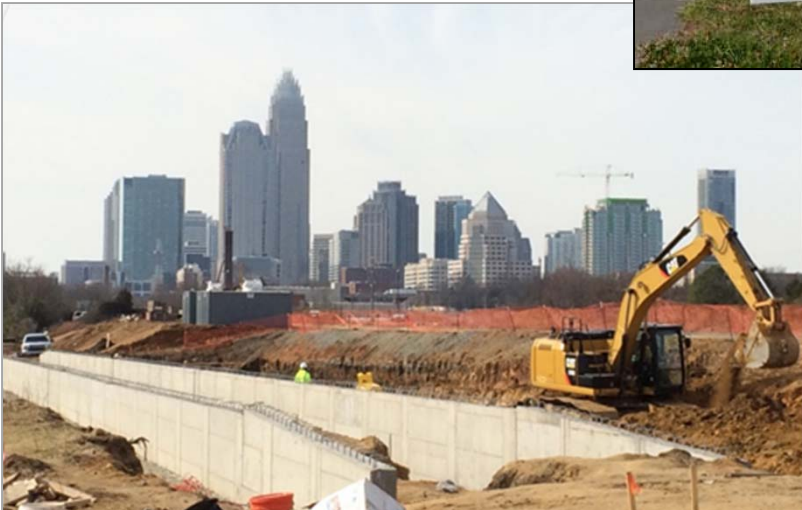


Project Overview

- 9.3 miles, 11 stations
- 4 park and ride facilities
- Approximately 3,100 parking spaces
- Accommodates 3-car trains
- 25,000+ daily riders
- Improvements to North Tryon St.
- Connects UNC Charlotte campuses
- 22 minute commute from Uptown to UNC Charlotte
- Initial peak period service 7.5 minute frequency
- Connecting bus services
- Revenue service in 2017
- Project Cost: \$1.16 billion



LYNX Blue Line Extension



Construction continues along the alignment

- CATS is in constant contact with citizens and businesses to:
 - Alert them about street closures and work
 - Answer questions and provide assistance

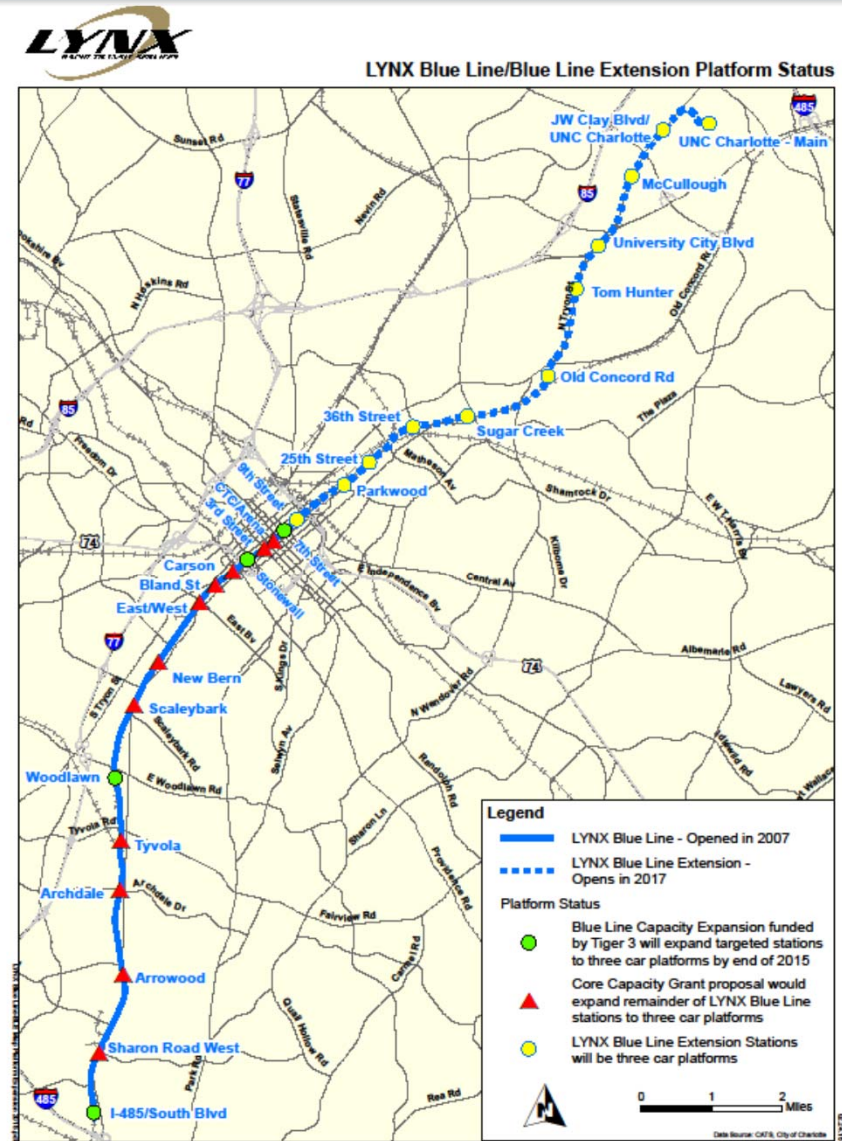
Blue Line Capacity Expansion & BLE Platform

Project Overview

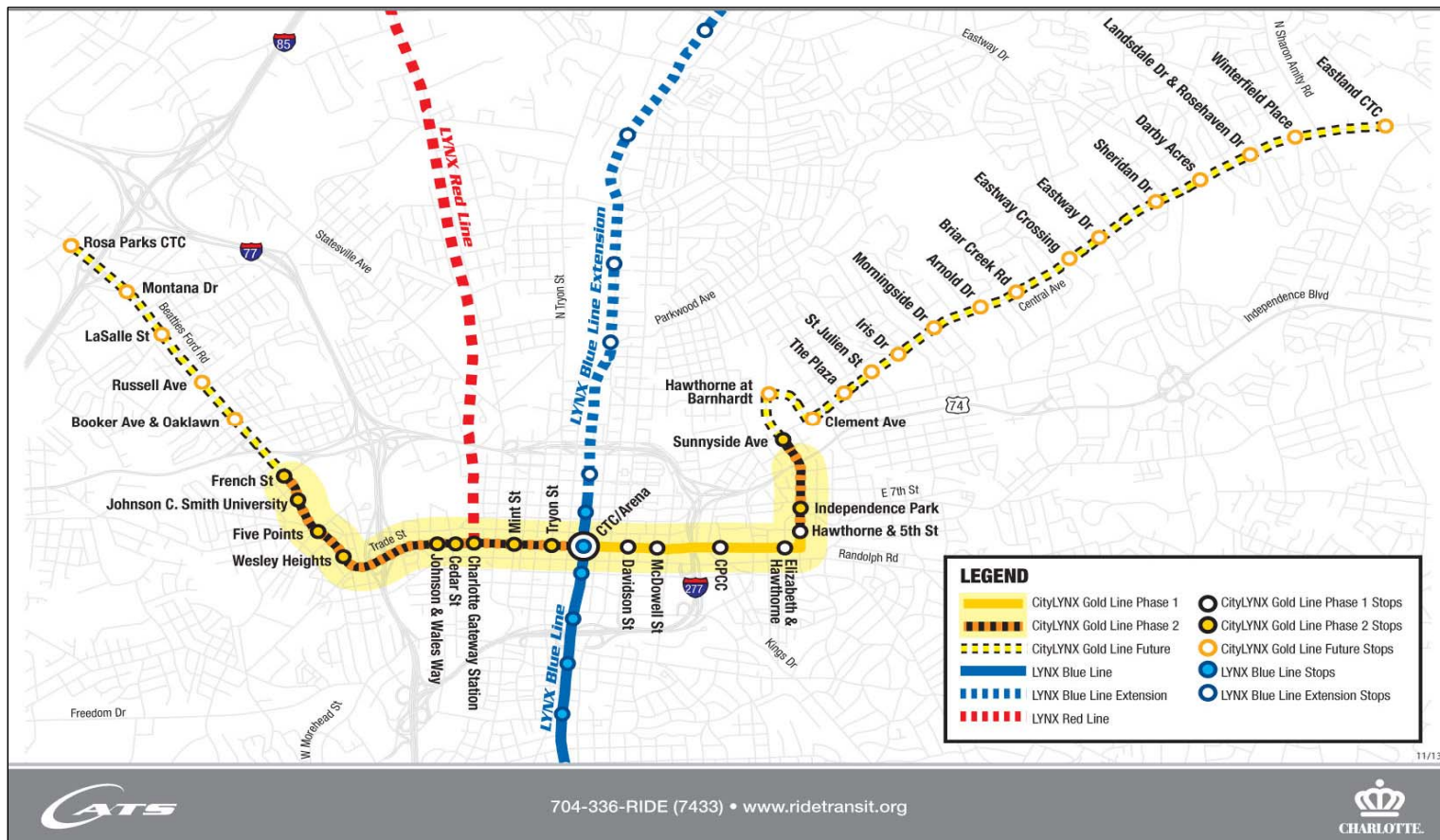
- TIGER III Grant
- Expanding platforms at four LYNX Blue Line stations
- Platforms will accommodate 3-car trains like stations on BLE
- Fall 2015 estimated completion
- Project Cost: \$22.5 million

Core Capacity Grant

- Applied for 11 remaining Blue Line Extension stations



CityLYNX Alignment and Connectivity Map



Phase 1 – Opening June 2015

- Urban Circulator Grant
- Construction began December 2012
- First 1.5 miles nearing completion
- Will provide greater connectivity and mobility
- Project Cost: \$37 million



Phase 2

- FTA Small Starts Grant
- Extends Phase 1 by 2.5 miles on the east and west ends
- Recommended in President's FY2016 budget
- Projected service in late 2019
- Project Cost: \$150 million





Questions

