

Wherever Your Path May Lead RTS Takes You There!



RTS Public Transit Vision

To be the transportation mode of choice for the Gainesville metropolitan area.

RTS Public Transit Mission

To enhance the quality of life in our community by providing safe, courteous, equitable, reliable and energy-efficient transportation services.



REGIONAL TRANSIT SYSTEM

IN PARTNERSHIP WITH THE CITY OF

GAINESVILLE
every path starts with passion
FLORIDA

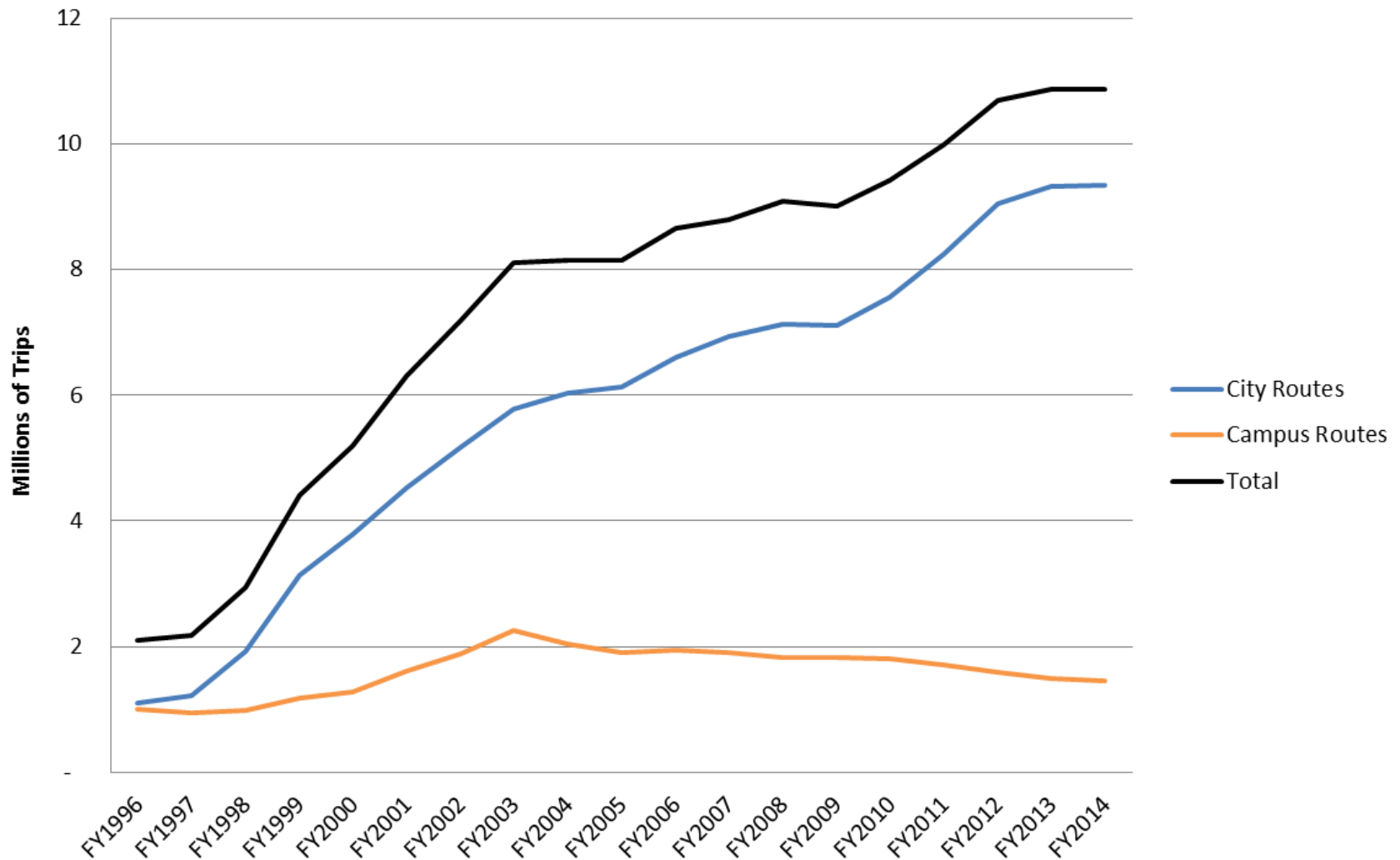
"Wherever Your Path Leads...RTS Will Take You There!"

Serving Our Community

- Service Area: 92 sq. miles
- Service Area Population: 159,508 UZA
- 290 employees
- Fleet Size: 126 buses
- Fleet Age: 10 years
- City Routes: 33 (86 buses)
- Campus Routes: 10 (18 buses)
- Later Gator: 5 (13 buses)
- ADA Service: 22 Vans

RTS contracts with MV Transportation

RTS Fiscal Year Ridership (1996-2014)



New Facility? Why the need?



Why the need?

FTA FY 2002 Triennial Review: Garage is crowded... must provide plan to FTA for improving the condition... Existing facility only able to house 50-70 buses. RTS fleet comprised of 126 buses.

FTA FY 2005 Triennial Review: Committed to dealing with the deficiencies of the Maintenance Facility. No space for expansion of services.

RTS Old Facility



Old RTS Facility

Conditions

- Inefficient operations
- Overcrowding
- Lack of Storage Space



Old RTS Facility

- High energy costs
- Building beyond useful life
- High building maintenance costs



RTS Master Plan

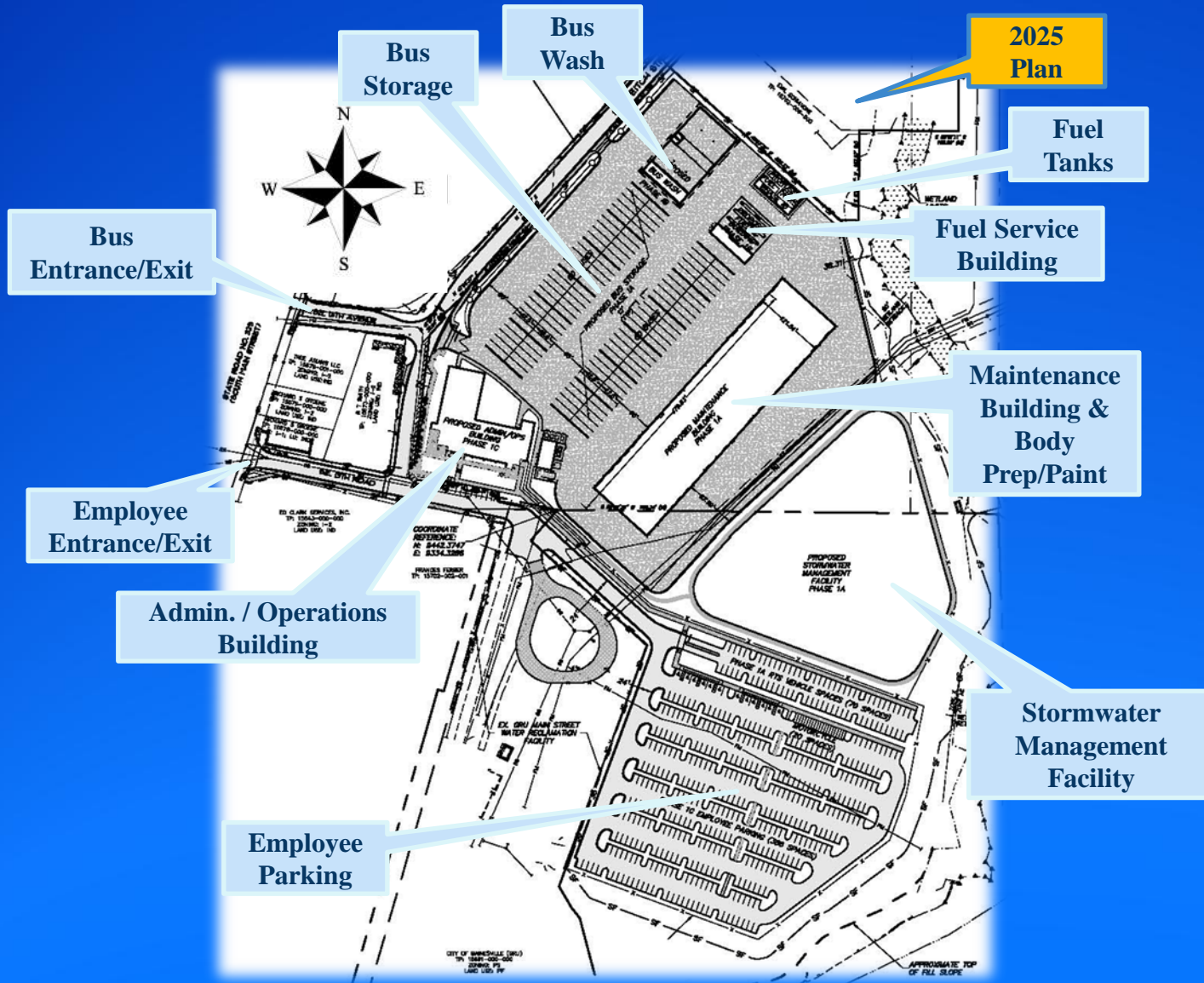
- Based on Long Range Transportation (LRTP) and Transit Development Plan (TDP)
- Need assessment to accommodate larger fleet, plan for future growth, and consolidate administration
- 4 Phases (230 bus facility, 500 employees)
 - Phase 1: 50 bus facility (\$12.7 million)
 - Phase 2: 50 bus facility (\$20.6 million)
 - Phase 3: 65 buses (\$24.2 million)
 - Phase 4: 65 buses (\$8.6 million)
- Cost of approximately \$66.1 million
- Available Funds in 2011 (\$13.7 million)

RTS Project Approach

- Design Build approach
- Design for all phases and combined to 2014 (Phase1) and 2025 (Phase 2)
- Construction of phase 1

Description	Amount
Section 5309 (FY2006-2009)	\$ 4,306,123
State of Good Repair (SGR) I (FY2011)	\$ 10,150,689
Local Funds	\$ 529,657
Florida Department of Transportation (FDOT) (FY 2012)	\$ 1,350,000
Livability Grant (FY2012)	\$ 9,000,000
State of Good Repair (SGR) II (FY2012)	\$ 15,000,000
Total	\$ 40,336,469

RTS Plan



FUNDING PLAN

- +/- 20 acres total area
- Phased Construction

Phase 1

- +/- 29,650 SF Admin & Ops
- +/- 59,720 SF Maintenance
- +/- 6,380 SF Fuel Service
- +/- 3,200 SF Fuel Tanks
- +/- 12,728 SF Bus Wash
- +/- 150 Bus Storage
- +/- 372 Parking Spaces

Roadway Improvements

- SE 13th Road
- SE 13th Avenue
- SE Veitch Street
- Resurfacing
- Reconstruction
- Utility Work
- Lighting
- Sidewalk

Phase 2

- Future Property
- +/- 50 Bus Storage

RTS Project Approach

Property Purchases: NEPA

Engineering and Design:

- ADA Accessibility Guidelines (ADAAG)
- Value Engineering
- Constructability/Peer Review
- Service Life (Useful Life, 40 year facility)

Procurement:

- Buy America certification
- Independent Cost Estimate
- Cost and/or Price Analysis
- Brooks Act must be followed for AE services

RTS Project Approach

Construction:

- The final deliverable must adhere to plans and specs
- Original Scope of project must be carried out in construction
- Maintain competent and adequate engineering supervision at the construction site
- Emphasis placed on managing a project within its budget
- Delivery of project within schedule
- Quality Assurance in final product

RTS Facility – Lessons Learned

- Design-Build team works well on a phased project
- Good Project Manager with FTA experience
- Buy America (Have Local Funds available)
- Have an FTA consultant available to review documents (PMP, SSMP, etc.)
- Conduct Peer Review

RTS Facility – Lessons Learned

- Visit other properties (Learned from other agencies mistakes)
- Plan for future growth
- Conduct owner direct purchases on large part of the project to save funds
- Make efforts to meet DBE goal (DBE goal was 1.87%, DBE participation was 8.2%)
- Created Jobs (over 700 people worked on this project)

Corrine Brown Transit Facility



Corrine Brown Transit Facility

