



NASHVILLE AREA

Metropolitan Planning Organization

Active Transportation: Safety, Mobility, Health and Equity

Leslie Meehan, AICP
FTA 2015 Southeastern Regional Transit Conference
May 14, 2015

Policy: Public Opinion



#1

A Bold, New Vision
for Mass Transit

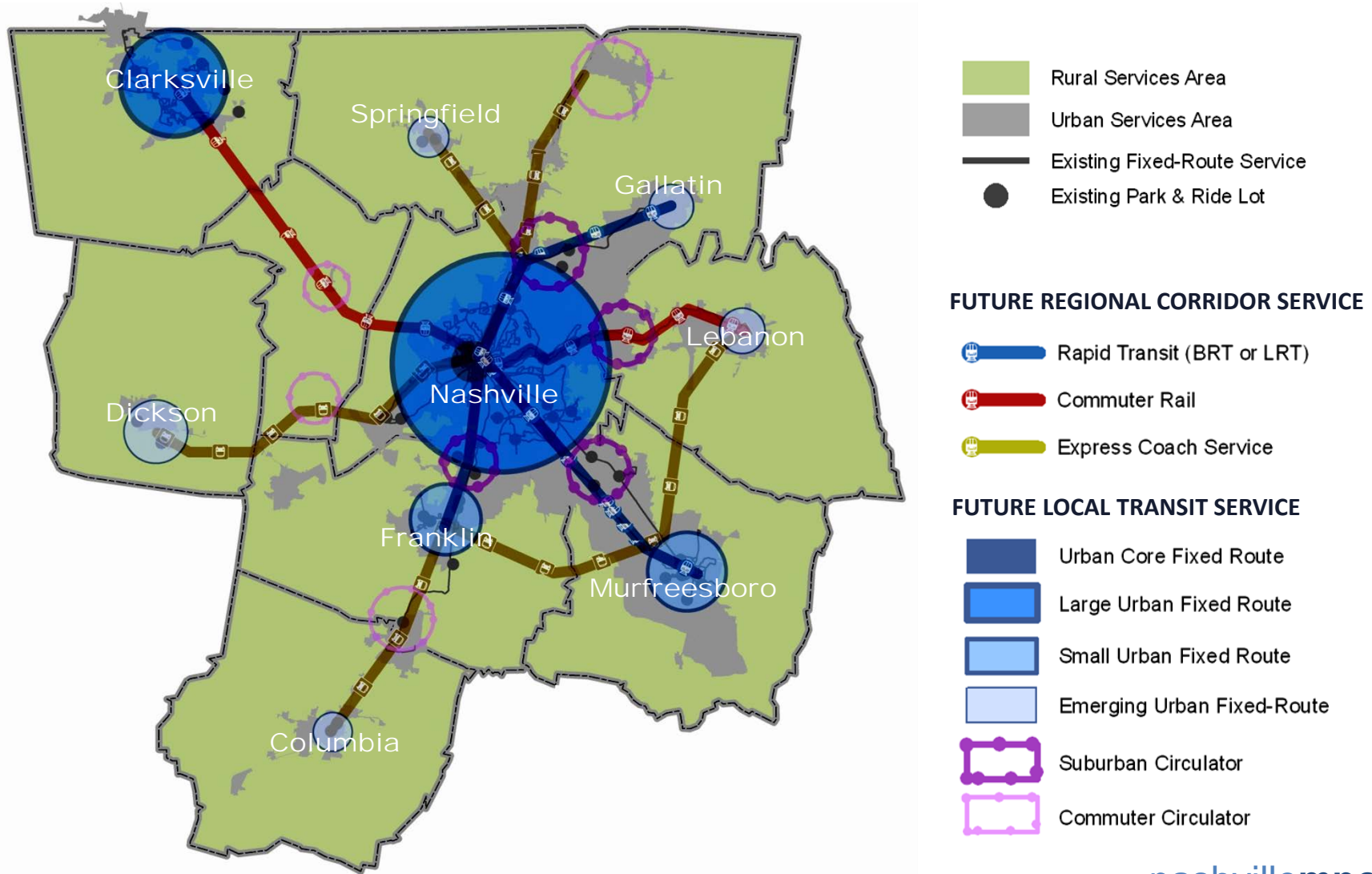
#2

Support for
Active Transportation
& Walkable Communities

#3

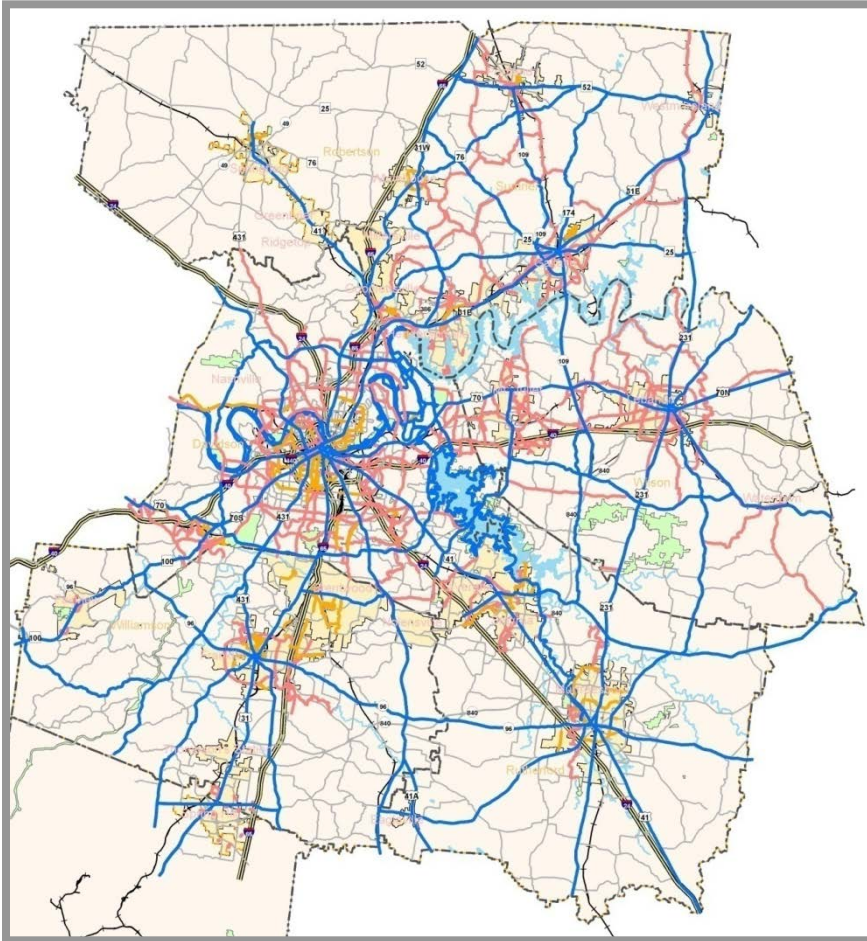
Preservation &
Enhancement of
Strategic Roadways

A Bold, New Vision for Mass Transit

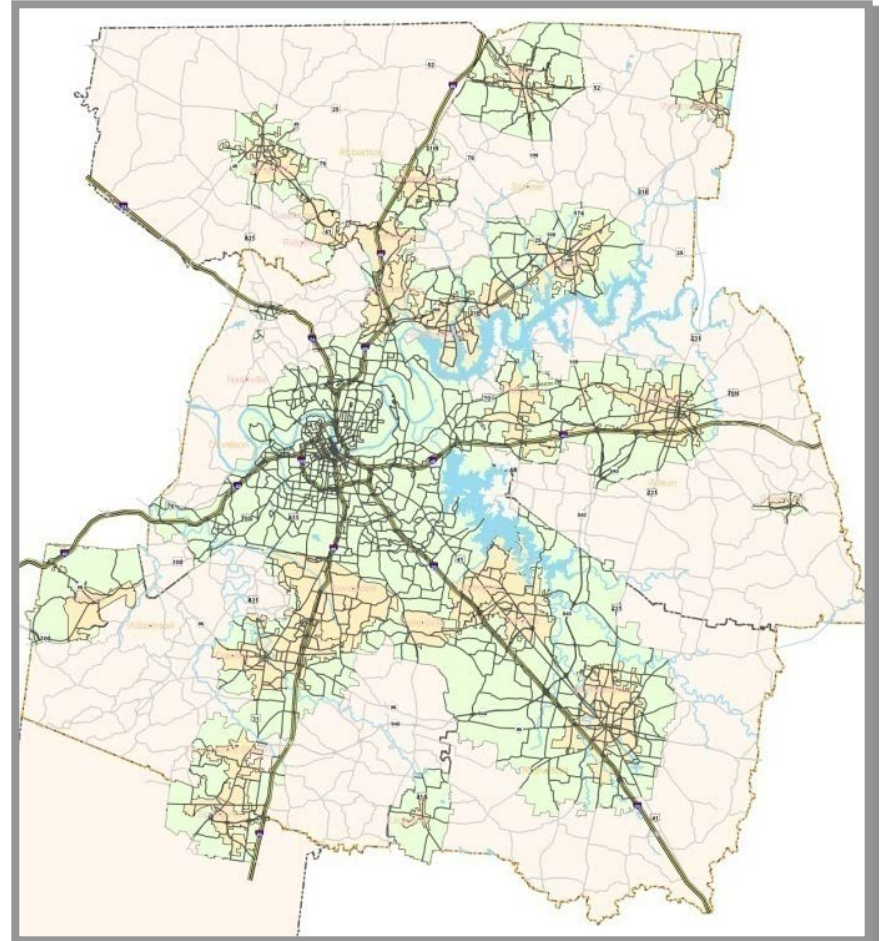


A Regional Vision for Non-Motorized Modes

Bikeways



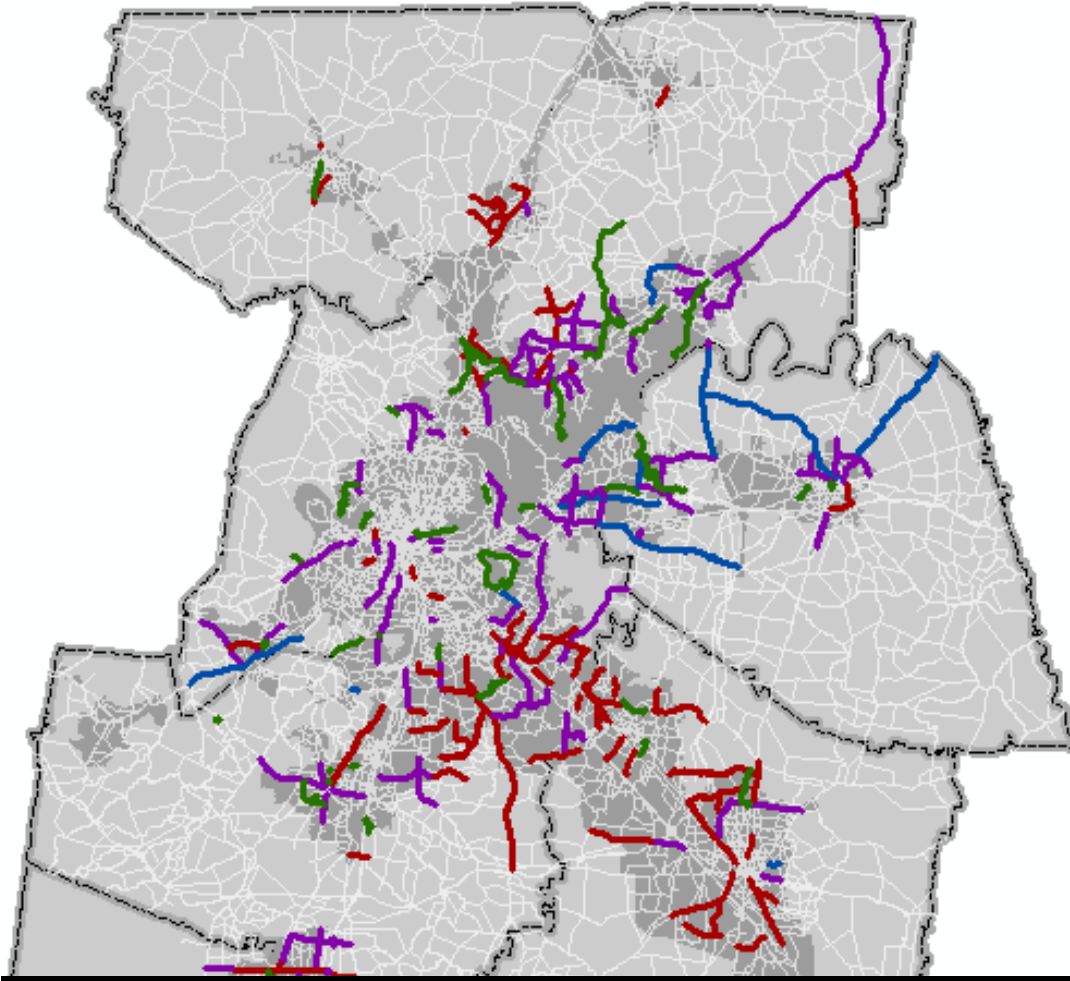
Sidewalks



MPO's Urban STP Investment Strategy

- ➡ 70% Multi-Modal Roadway Safety & Capacity
- ➡ Projects Scored on Criteria – 100 points
 - **Quality Growth and Sustainable Development – 15pts**
 - **Multi-Modal Options – 15pts**
 - **Health & Environment – 10pts**
 - **Safety & Security – 10pts**
 - **Congestion Management – 10pts**
 - **System Preservation & Enhancement – 15pts**
 - **State & Local Support/ Investment – 15pts**
 - **Freight & Goods Movement – 10pts**

Projects: Complete Streets



2035 Plan: 70% of adopted roadway projects include sidewalks, bicycle lanes, or shared-use lanes (up from 2%)

➡ 70% roadway \$ to projects that improve health

MPO's Health Investment Strategy

Roadway Funding:

- ➡ 70% - Roadway projects that improve health
- ➡ 15% - Sidewalks, bicycle lanes, greenways, transit stops, and education
- ➡ 10% - Transit
- ➡ 5% - Intelligent Transportation Systems

Data Collection: Middle Tennessee Transportation and Health Study

Transportation, Physical Activity and Health Data Collection and Analysis

Middle Tennessee Transportation and Health Study



[Welcome](#) [About the Study](#) [Invited to Join?](#) [Report Travel](#) [FAQs](#) [Materials](#) [Contact Us](#)

Step 1

Invited to join? Complete a Household Questionnaire.
[Start Here](#)

Step 2

Record your travel on your assigned day using your travel log.
[Learn More...](#)

Step 3

After your travel date, please report your travel information.
[Report Travel](#)

Step 4

If selected, complete the additional Health Survey.
[Take Health Survey](#)

Welcome! The Middle Tennessee Transportation and Health Study is sponsored by the **Nashville Metropolitan Planning Organization**, the **Clarksville Urbanized Area Metropolitan Planning Organization**, and the **Tennessee Department of Transportation**. If you have received a participation letter, please [Start Here](#) to begin the survey.



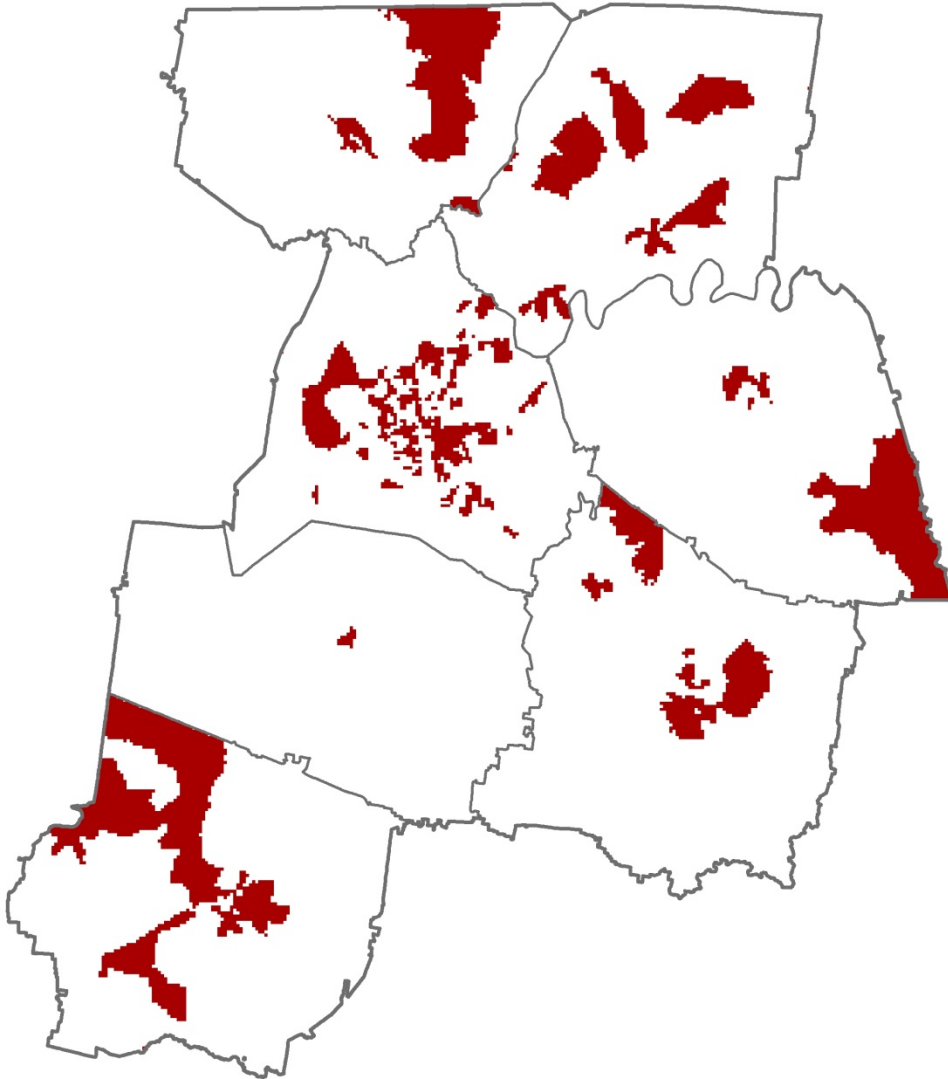
Every day, thousands of people move through the middle Tennessee region—in cars, on buses, by foot, on bikes. To plan for the projects of *tomorrow*, we need to understand how you travel *today*. Your participation in this important survey will help improve the future of transportation for all of us.



www.middletnstudy.com

nashvillempo.org

Health Priority Areas

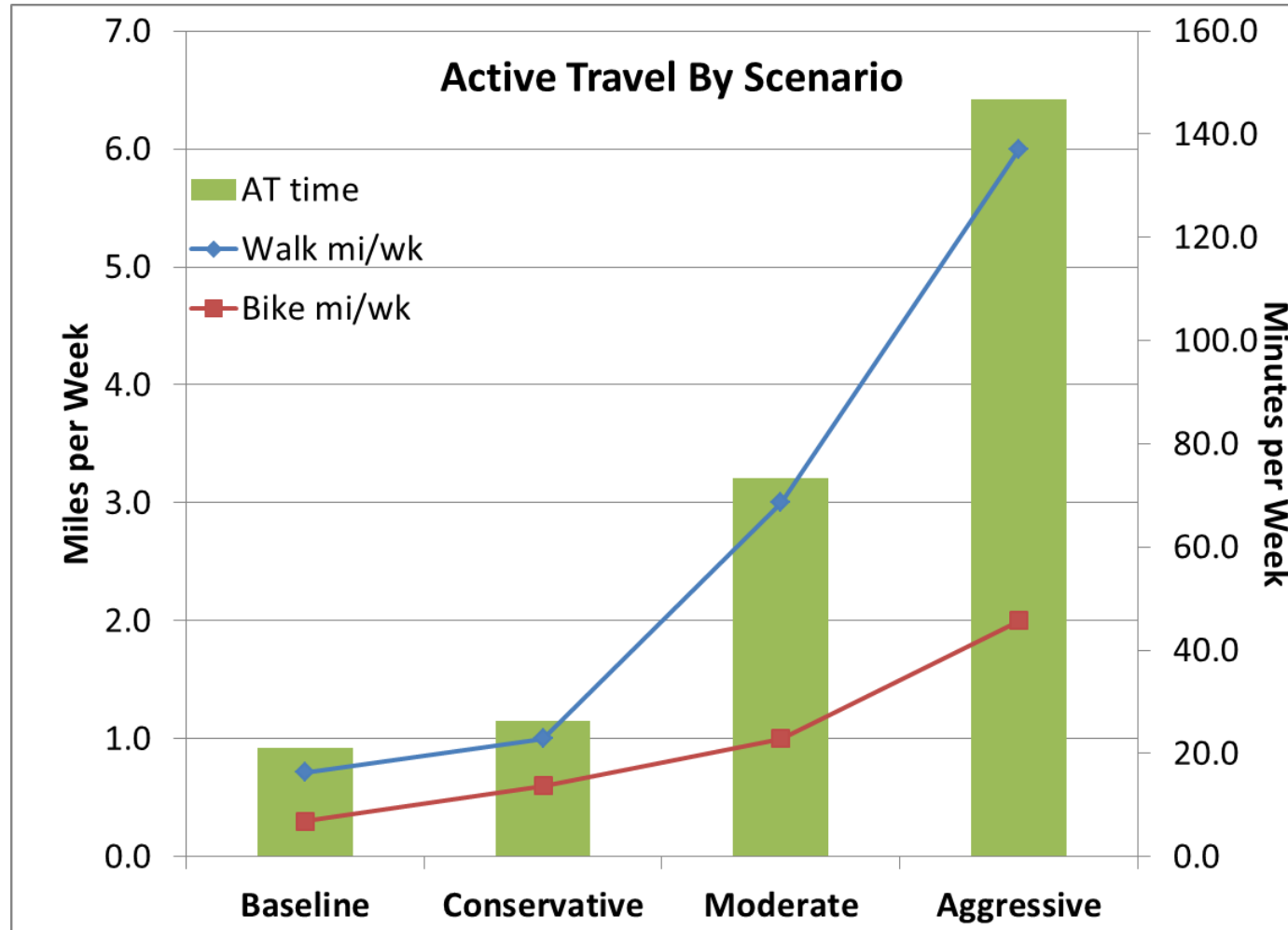


Health Priority Areas

3 out of 4:

- Poverty
- Unemployment
- Carless Household
- Aging (over age 65)

Happening Now: Integrated Transport and Health Impact (ITHIM)



Monetization: Impacts of Physical Activity via Transportation on Health

Moderate Scenario	Change in disease burden	Change in DALYs per year
Cardiovascular Diseases	31.3% ↓	4326
Diabetes	11.2% ↓	1252
Depression	2.7% ↓	460
Dementia	3.9% ↓	879
Breast cancer	2.8% ↓	124
Colon Cancer	2.6% ↓	94
Collisions	13.8% ↑	1240



Savings:
**\$200
Million**
per year in
healthcare
costs

twitter @NashvilleMPO

facebook /NashvilleMPO

Leslie A. Meehan, AICP
Director of Healthy Communities
Nashville Area MPO

meehan@nashvillempo.org
615-862-7211



Livability. Sustainability. Prosperity. Diversity.