

2020 FTA Joint State Safety Oversight and Rail Transit Agency Virtual Workshop

October 6-8, 2020



U.S. Department
of Transportation

**Federal Transit
Administration**



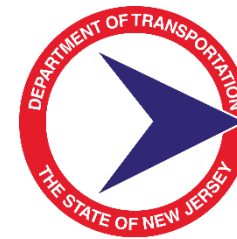
U.S. Department of Transportation
Federal Transit Administration

Operating in a Coronavirus Disease 2019 (COVID-19) Environment

Oversight of a Multi-State Rail Transit Agency with Two State Requirements and One Transit System

Kimbrali Davis, Manager, New Jersey State Safety Oversight Agency

Dave Fullerton, Director, Safety Services, Delaware River Port Authority



New Jersey State Safety Oversight

Designation Submissions for States with Rail Transit Agencies Operating in More than One State

As specified in 49 CFR § 659.9 - Designation of oversight agency (e) Multiple states:

In cases of a rail fixed guideway system that will operate in more than one state, each affected state must designate an agency of the state, other than the rail transit agency, as the oversight agency to implement the requirements in this part. To fulfill this requirement, the affected states:

(I) May agree to designate one agency of one state, or an agency representative of all states, to implement the requirements in this part; and

New Jersey State Safety Oversight Agency

There are three rail transit agencies in the SSO Program with multi-state service areas.

- WMATA
- St. Louis Metrolink
- PATCO

For the Port Authority Transit Corporation (PATCO), the State of New Jersey assumes full oversight responsibility, even for PATCO's operations in Pennsylvania. The New Jersey Department of Transportation (NJDOT) has established an agreement with the Pennsylvania Department of Transportation (PENNDOT), and New Jersey State Safety Oversight Agency (NJ SSOA) is designated to ensure that the rail fixed guideway system is subject to a single program standard for compliance.

New Jersey State Safety Oversight Agency



Port Authority Transit Corporation (PATCO), owned and operated by the Delaware River Port Authority (DRPA), is a heavy rail line that travels between New Jersey and Pennsylvania.

DRPA/PATCO Board of Commissioners has 16 members that are appointed by Both Governors- 8 from New Jersey and 8 from Pennsylvania.

New Jersey State Safety Oversight Agency

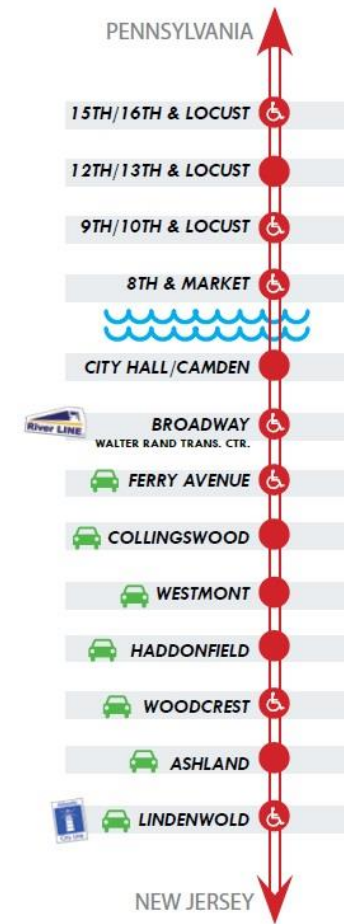


The PATCO line is a double track operation that extends approximately 14.3 miles of double track grade separated system from Lindenwold, New Jersey to the Philadelphia, Pennsylvania and uses the Benjamin Franklin Bridge to provide train service between New Jersey and Pennsylvania.

2.3 miles of track in downtown Philadelphia, Pennsylvania and Camden, New Jersey are underground subway and the remaining 12.2 miles are aboveground.

New Jersey State Safety Oversight Agency

PATCO provides a 24 hour service throughout the year transporting an estimated 37,000 daily passengers (Pre-Coronavirus Pandemic Levels) via 13 rail stations. The passengers are transported on 60 married pairs of recently refurbished railcars. (120 cars in total)



PATCO High Speed Line

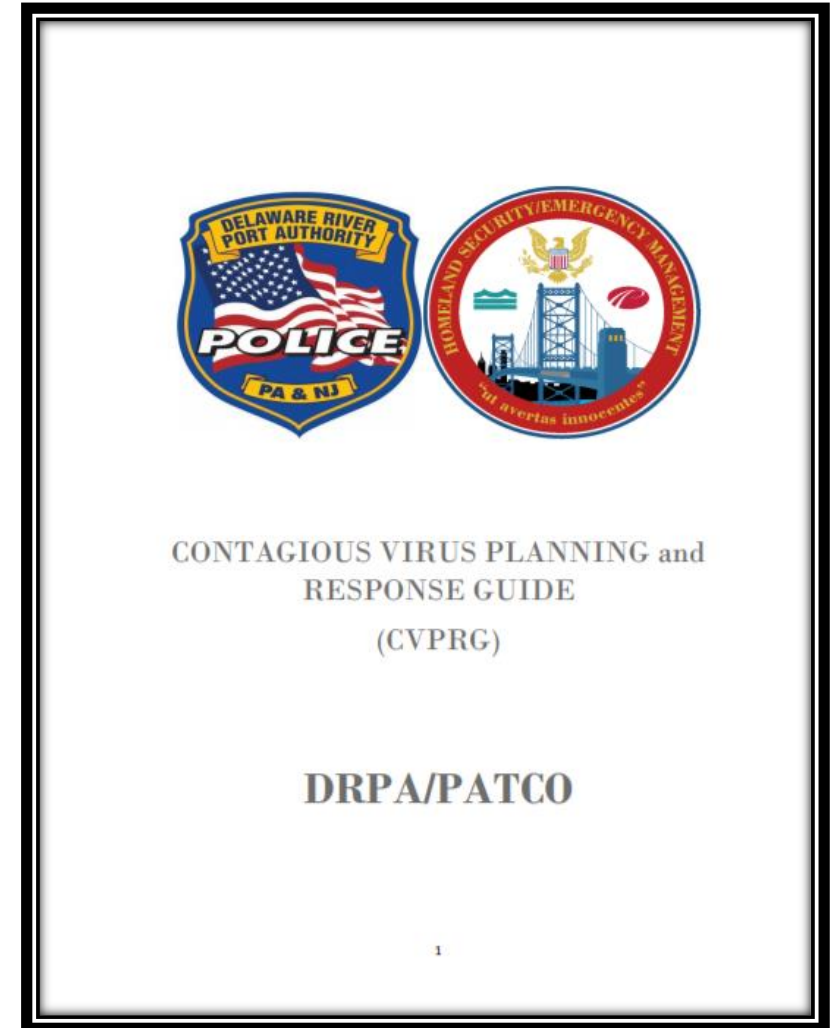
- 3 Philadelphia Stations and Tunnels
Leased from the City
- Philadelphia Concourses Owned by City
and SEPTA
- Center City District Maintains Some
Concourses
- DRPA/PATCO Police Department
- 350 PATCO Employees
- 450 DRPA Employees
- Serves 3 Hospital Campuses
- Interchange with NJ Transit,
Lindenwold, Haddonfield, Ferry
Avenue, Broadway (VVRTC)



©NJDOT Aeronautics UAS Photo
PATCO Rail Yard 20200809

PATCO's Covid-19 Response

- Contagious Virus Planning and Response Guide
- Remote Work for Most Administrative Staff
- Reduced Schedule
- Reduced Front Line Staff
 - Reduced Days, Full Pay, No Layoffs
- Daily Executive Staff Meetings
 - Monitoring Response
 - Establishing Policies and Procedures
 - Planning
 - All Aspects of Incident Command System



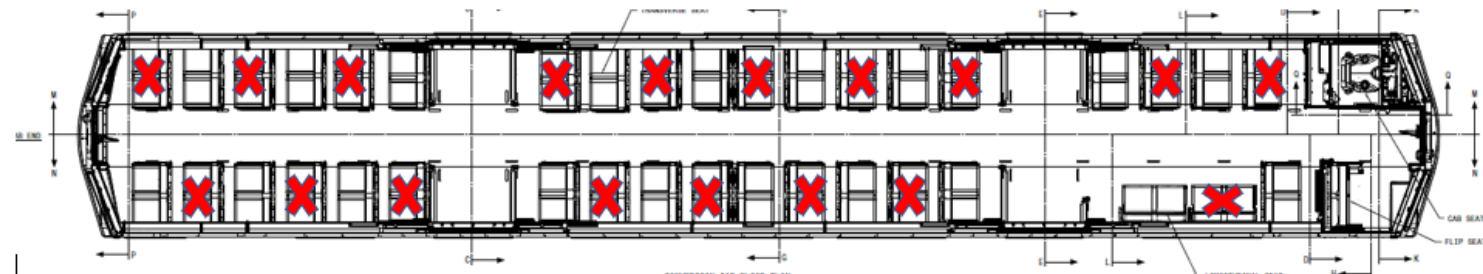
PATCO's Covid-19 Response

- Stations
 - Signage and Floor Markings
 - Police Enforcement (None to Date)
 - Social Media
 - Digital Signs



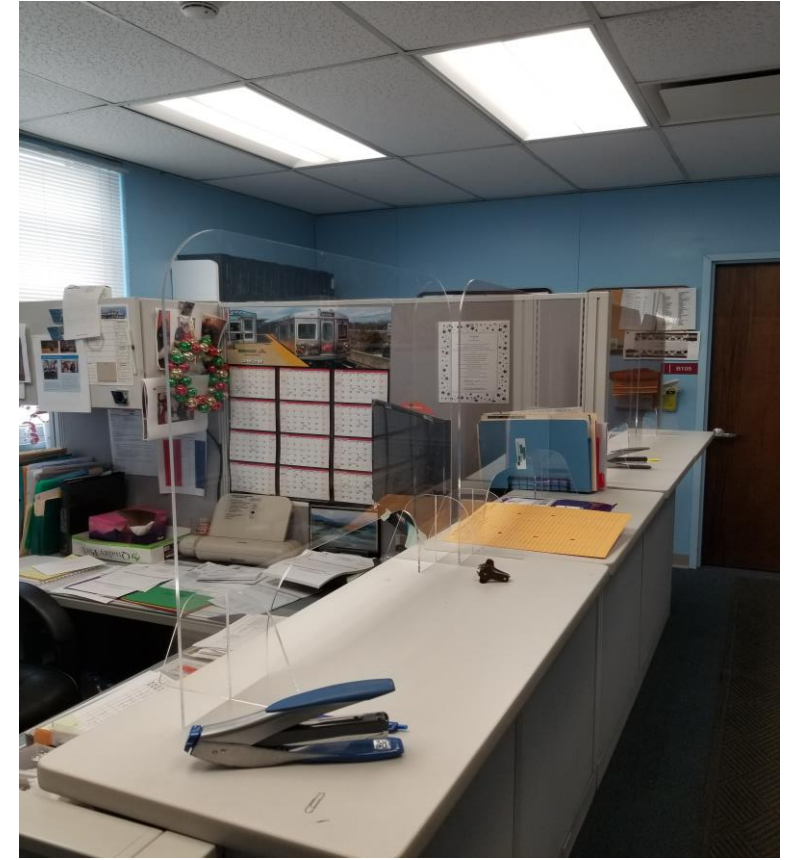
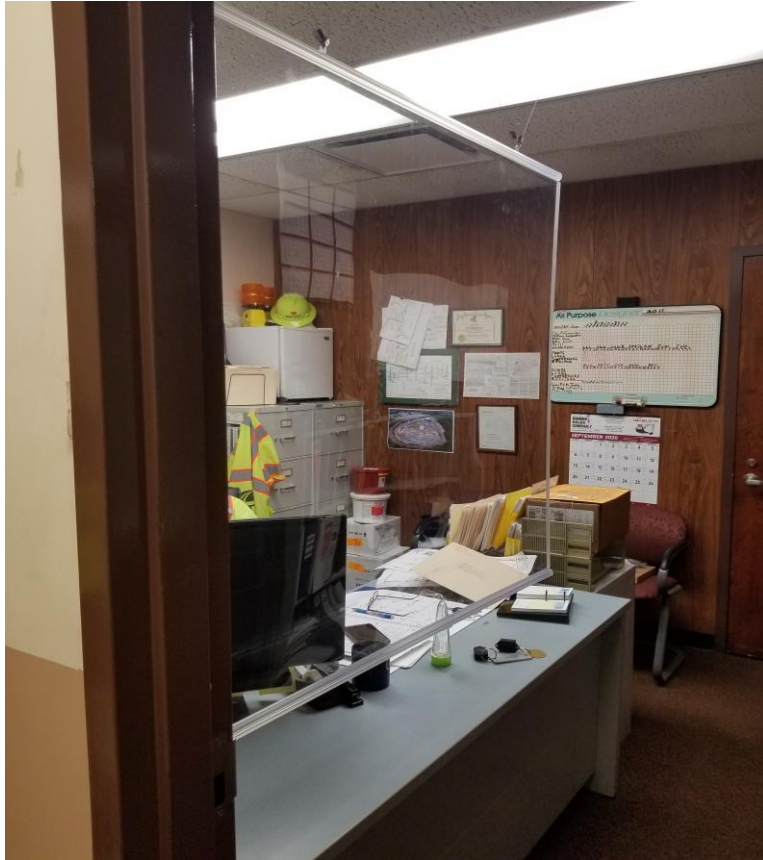
PATCO's Covid-19 Response

- **Aboard Trains**
 - Trains are well marked to promote distancing
 - Digital Screens Amplify Messaging
 - Pre-recorded Announcements in Rotation
 - Physical Barrier Protects Operators
 - Operators alone in lead cars (initial weeks)



PATCO's Covid-19 Response

- Shops and Offices



PATCO's Covid-19 Response

- Shops and Offices



PATCO's Covid-19 Response

- Covid-19 Countermeasures are tracked and reported in NJDOT Database

Clipboard | Advanced | Refresh | Save | Find | Text Formatting

Dashboard | EAR | CAPS

Exit Form

● CAP ● HAZARD ● CAP with HAZARD

tblCA	Status	Initial Date	NJ Tracking Number	SSO Approve	OSS Review	CAP Source	Responsible Person	Pr
175	Open	5/19/2020	P2018-07-19_T0858	No	No	Incident Investigation		Op
103	Closed	4/20/2020	P2020-04-20_T1655_CAP	No	Yes	Incident Investigation	J. Barrett	Oth
158	Closed	4/14/2020	P2020-04-14_T1546_CAP	No	Yes	NJDOT Inspection	John Barrett	Oth
157	Closed	4/14/2020	P2020-04-14_T1541_CAP	No	Yes	NJDOT Inspection	John Barrett	Oth
166	Closed	4/14/2020	P2020-04-14_T1125_CAP	No	Yes	NJDOT Inspection	Adam Jacurak	Oth
161	Closed	4/14/2020	P2020-04-14_T1631_CAP	No	Yes	NJDOT Inspection	Bill Shaw	Oth
159	Closed	4/14/2020	P2020-04-14_T1556_CAP	No	Yes	NJDOT Inspection	Bill Shaw	Oth
148	Closed	4/14/2020	P2020-04-14_T1150_CAP	No	Yes	NJDOT Inspection	Danish McBride	Oth

Save / Move Record | New | EMAIL OSS CAP | Print Record | Export Current Record | Export All Records

Reviewed by The Office of System Safety

Service Line: PATCO | Initial Date: 4/14/2020 | CAP Source: NJDOT Inspection

CAP Status: Closed

NJ Tracking Number: P2020-04-14_T1556_CAP

Check | Create

Restrictions/Mitigation

The P&S Department is following the current company direction provided by PATCO – NJDOH guidelines. Social distancing along with PPE usage when required. If more than one employee is occupying a company vehicle, masks and gloves are to be worn.

Optional Notes

NJDOT: Welcome to the Corrective Action Plan Form

State of New Jersey SSO SUMMARY OF Corrective Action Plan

CAP ID: 157 | Property: PATCO | NJ Tracking Number: P2020-04-14_T1541_CAP | Status: Closed | OLD NJ Tracking Number:

Initial Date: 4/14/2020 | Initial Time: 15:41 | SSO Approved: ☒ | SSO Approval Date: | CAP Source: NJDOT Inspection | OSS Reviewed: ☒

Responsible Person: John Barrett | Responsible Department: Equipment | Person Responsible Phone Number: | Person Responsible Email:

Proposed Implementation Date: 5/6/2020 | Estimated Completion Date: 3/16/2020 | Deadline: 5/6/2020

Property Tracking Number: | Hazard Risk Index Leading: | Hazard Risk Index Lagging: | Submitted Date: 5/5/2020 | Last Updated Date: 5/5/2020

Finding: Did not review established and implemented measures to create physical separation greater than 6 feet between transit facility employees, transit operators, and passengers.

Short Description:

Probable Cause: Other | Compliance Status: Compliant | Finding Category:

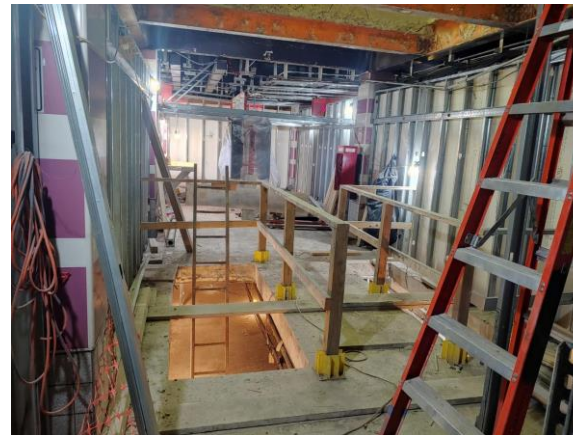
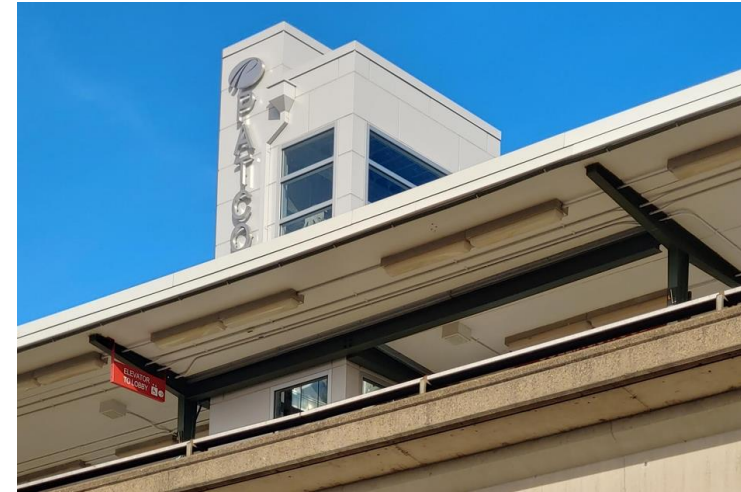
CAP: Establish and implement measures to create physical separation greater than 6 feet between transit facility employees, transit operators, and passengers. [Also covered in E0107 pg3 par 4 & E0 125 1(a), 1(f)]

Restriction Mitigation: Shop Managers/Foreman regularly walk around to ensure employee compliance with social distancing rules & PPE usage.

Metrics For Monitoring: Plan Review | Method Of Verification: Documentation

PATCO's Covid-19 Response

- **Capital Projects**
 - Philadelphia & Pennsylvania
Suspended Most Construction
 - New Jersey Exempted
Transportation and Public Works
Projects
 - DRPA elected to continue
construction in Pennsylvania
including station elevators at
PATCO



PATCO's Covid-19 Response

- **Solar Project**



PATCO's Covid-19 Response

- **Station Closures**
 - Closed 3 Above Ground Stations and 1 Subway Station
 - Expedited Elevator and Other Construction
 - Reduced Cleaning and Other Maintenance
 - Vacated Spaces Invited Other Uses



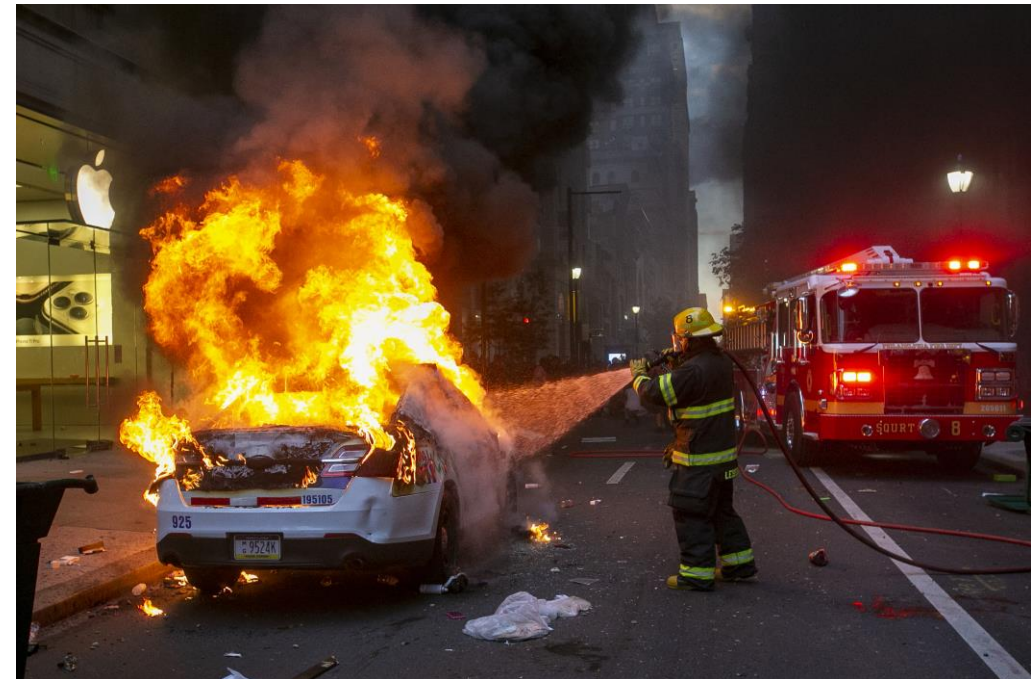
PATCO's Covid-19 Response

- **Closing a Subway Station Required Extraordinary Measures to Prevent Entry**



PATCO's Covid-19 Response

- Despite the low ridership it's been a busy summer.



PATCO's Covid-19 Response

- We're continuing to plan a return to normal operations while providing support for employees whether they're working from home or in our facilities.



About Bridges Travel Info PATCO Transit Projects Doing Business

QUICK LINKS

OUTLOOK 365

[Email](#)
[Teams](#)

SAP

[ESS/MSS Time Entry](#)
[Business Workplace](#)
[Ariba Network](#)

TEXT ALERTS

To manage your emergency notification profile and phone number(s):
<https://member.everbridge.net>

VPN REMOTE ACCESS SETUP

****ONLY**** available to previously approved staff and prior network configuration by IS.

IMPORTANT MESSAGES



MESSAGES FROM THE CEO

- 09/03/20 [Thank you for everything you are doing to keep DRPA/PATCO functioning efficiently & effectively, & continuing to serving our community! \[VIDEO\]](#)
- 08/26/20 [I am always interested in your feedback. Please feel free to email or call. \[VIDEO\]](#)
- 08/18/20 [Continuing the conversation - how PATCO & DRPA do their part](#)
- 08/07/20 [Mask Guidance](#)



BE WELL. STAY INFORMED.
WE'RE IN THIS TOGETHER.

PHASED RE-ENTRY PLAN STATUS:



[COVID-19 INTERIM WORKPLACE POLICIES](#)

UPDATES

- 09/18/20 [CAO Brown provides a Cross-functional COVID-19 Task Force Update](#)
- 08/05/20 [An Important Message from the Cross-functional COVID-19 Task Force](#)



U.S. Department of Transportation
Federal Transit Administration

Contact Information

Kimbrali Davis, Manager, NJDOT SSOA

Kimbrali.Davis@dot.nj.gov

609-963-2090

Dave Fullerton, Director, Safety Services, DRPA/PATCO

ddfllerton@drpa.org

609-820-6333

