

# **2020 FTA Joint State Safety Oversight and Rail Transit Agency Virtual Workshop**

---

**October 6-8, 2020**



U.S. Department  
of Transportation

**Federal Transit  
Administration**



U.S. Department of Transportation  
Federal Transit Administration

# Operating in a COVID-19 Environment

- **Introductions & Agency Characteristics**
- **Internal Communications, Planning & Strategy**  
*Gena Major – Chief Safety Officer & Assistant General Manager, DSQA*
- **Pandemic Plan & Continuity of Operations Planning (COOP)**  
*Gregory Gamble – Emergency Preparedness Unit Commander & Lieutenant - MARTA Police Department*
- **Environmental Health & Safety**  
*Leslie Hubble – Manager - Environmental Health & Safety, DSQA*
- **Coordinating & Collaborating with External Partners (We're All In This Together)**  
*M. Scott Kreher – Assistant General Manager & Chief of MARTA Police and Emergency Management*



2



## Agency Characteristics

- 11<sup>th</sup> Largest US Public Transit System
- 550+ Buses; 101 Bus Routes; 9953 Bus Stops
- 338 Rail Cars, 39 Rail Stations; 104 Miles of Track
- ADA Complementary Paratransit Service (MARTA Mobility)
- 2.7 Mile Loop Light Rail Service (Atlanta Streetcar)
- 8 Maintenance Facilities
- Named 2019 Public Transit Agency of the Year by the Conference of Minority Transportation Officials (COMTO)
- Recognized by Forbes Magazine in 2019 as one of America's Best Midsize Employers

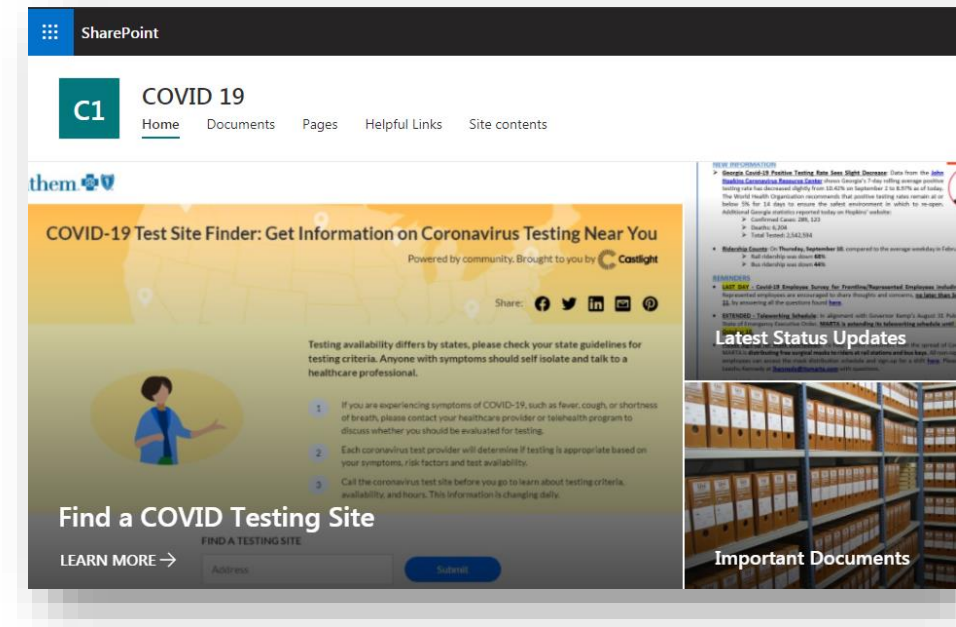


## Internal Communications, Planning & Strategy

- **Internal Communications**

- Executive Management Team – Daily Calls @ 7pm
- Authority Wide Situational Updates – Daily
- COVID-19 SharePoint Site for Forms and Bulletins
- [Tracking of Cases and Contact Tracing](#) – Public Facing Website
- Employee Hotline
- COVID-19 Employee Surveys

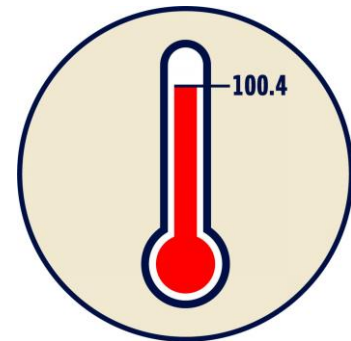
- Frontline/Representative
- MARTA Police
- Non-Representative



# Internal Communications, Planning & Strategy

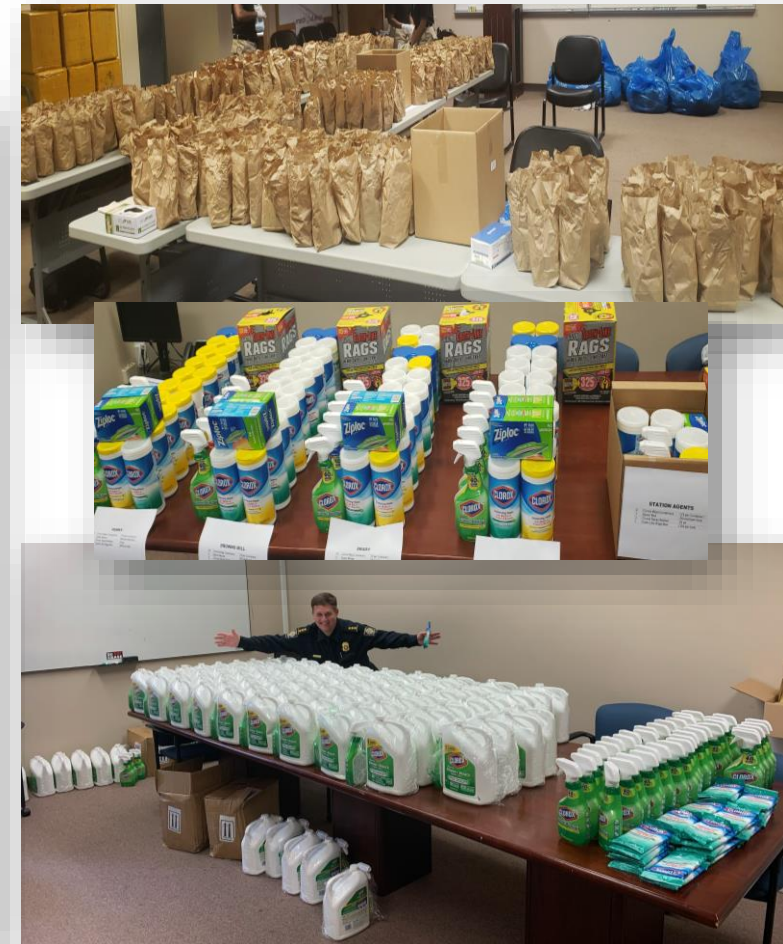
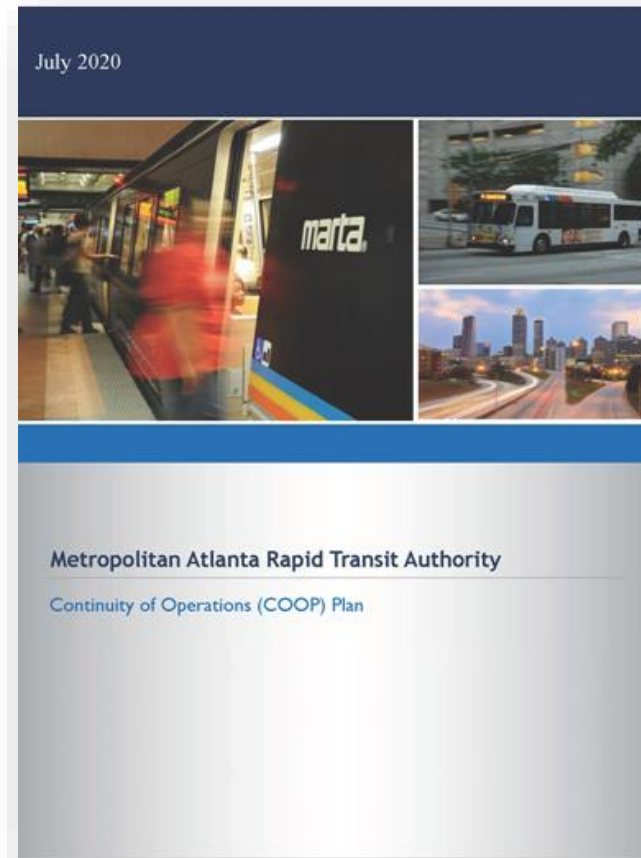
- **Planning & Strategy**

- Governor's Executive Orders
  - Public Health State of Emergency Issued March 14, 2020
- CDC Guidance as a Compass
  - 6-20-100 (*social distance 6ft, wash hands 20 secs, stay home if temp over 100 degrees*)
- Emergency Paid Sick Leave
- CARES Act in Action
  - Hero Pay and Employee Stipend
- Return to New Normal Task Force



# Pandemic Plan & Continuity of Operations Planning

- Pandemic & COOP Plans
- Pandemic Action Planning Committee
- Increase of P-Card spending limit for emergency purchases
- Purchase and Distribution of Supplies and Project Code

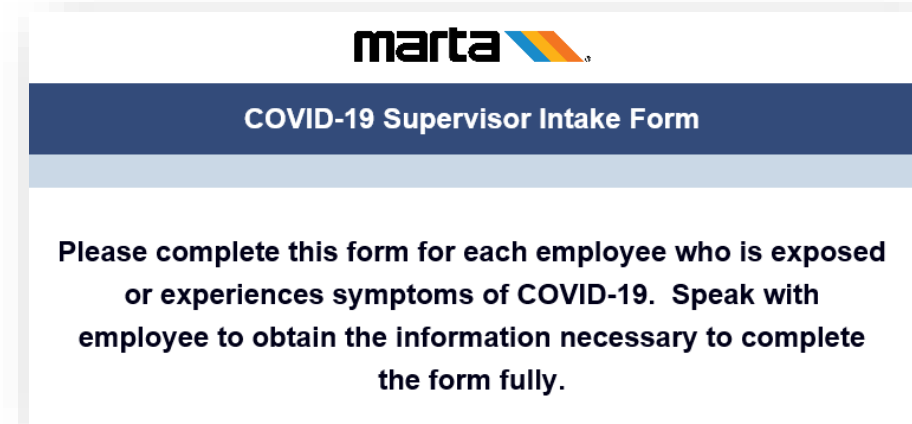




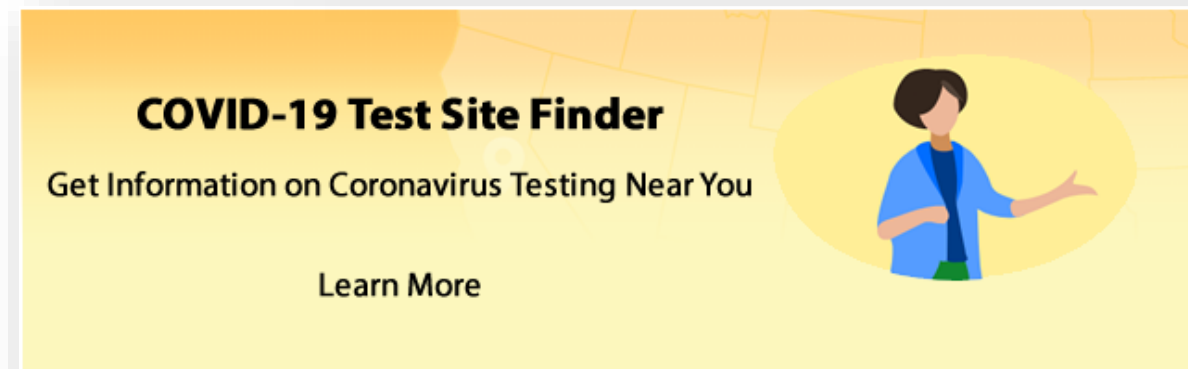
# Environmental Health & Safety

- ***Exposure Assessments & Contact Tracing***

- Supervisor Intake Form
- Contact Tracing
- Created Coronavirus Exposure Assessment Guidelines (following CDC exposure assessment guidance)
- Coordinating Disinfections
- Encouraging Testing



The screenshot shows the top portion of a form titled "COVID-19 Supervisor Intake Form" under the MARTA logo. The text on the form reads: "Please complete this form for each employee who is exposed or experiences symptoms of COVID-19. Speak with employee to obtain the information necessary to complete the form fully."



# Environmental Health & Safety

- **Product Approvals & Evaluations**

- Chemicals / Disinfectants
  - Used existing chemical approval process
  - Added comparison to COVID-19 disinfectant lists
    - Center for Biocide Chemistries
    - EPA List N
- Air Purification Systems
  - Needlepoint Bipolar Ionization
- Personal Protective Equipment
  - Testing of KN95 Masks



NEW CHEMICAL PRODUCT REQUEST FORM



# Coordinating & Collaborating with External Partners

## (We're All In This Together)

- **FTA/TSA**
- **DeKalb County Emergency Management Agency (DEMA)**
- **APD, DCPD, CCPD, EPPD, SFPD, etc.**
- **AFCEMA** (Atlanta / Fulton County Emergency Management Agency)
- **APTA** (American Public Transportation Association)



# Coordinating & Collaborating with External Partners

## (We're All In This Together)

- **Challenges**

- Conflicting State and City leaders' executive orders
- Conflicting public opinions around face coverings
- No local or state statutes to enforce mask mandates
- Conflicts internally within MARTA on mask enforcement vs. public health
- Continuity of service with our LE partners through Mutual Aid/MOUs



# Thank You